

elZinc[®]



MetalTech-USA

Changing Ideas Into Sustainable Reality.™

solutions

Metals + Systems + Capabilities

Who we are:

MetalTech-USA is a manufacturer, distributor, and reprocessor of architectural grade metals, facade systems, and roofing systems with a variety of modern metal finishes. Every **MetalTech-USA** product is engineered and created for sustainability, beauty, and durability. We offer a wide variety of colors, systems, and textures that will help your architectural idea become a sustainable reality.

Our Mission Statement:

MetalTech-USA aims to be the No. 1 specialty fabricator and distributor of architectural systems and high-end metals while striving to help make our customer's vision become a sustainable reality through superior service, quality, and performance. In our efforts to be a customer-driven organization and provide exceptional services to our customers, **MetalTech-USA** routinely revisits and develops the best practices and processes aimed at providing the ultimate customer experience. Our commitment to excellence is showcased in all we do. From cladding systems to innovative metal finishing techniques, we provide the best solutions for the building and design community.

Turning Vision into Reality

Thank you for reviewing our new SOLUTIONS booklet. We are confident that it will both enlighten and motivate you to solve your design dilemmas using our natural metals and adaptable cladding systems.

Flip through photos of our past projects, and get just enough information you need to get your creativity flowing. From complete building envelopes to perforated screen walls, we hope you become inspired, keeping us in mind for your next sustainable project.

Use this SOLUTIONS booklet to kick start creativity for your next project. Contact one of our representatives to help!

Turning your vision into reality,



Nils Simonsen,
President



Architectural Metals	2
elZinc®	4
Stainless Steel	8
Aluminum	9
Copper	10
Titanium	11
Weathering Steel	12
Systems	13
Reveal	14
Flatlock	16
Standing Seam	18
Corrugated	20
Custom	22
Surface Textures	26
PixArt	27
Perforated	28
Prisma	29
Services	30
Specification Tools	31
Case Study	32

Project: My Block Wash Park
Location: Denver, CO
Material: Preweathered Zinc
System: Flatlock Panels
Architect: Shears Adkins Rockmore Architects

ARCHITECTURAL METALS

EcoChoice™ Materials are our line of environmentally-sensitive, green friendly metal products for facades, roofs, and interior/exterior elements. In today's commercial building industry, there is an ever increasing demand to meet Green Building Standards.

MetalTech-USA embraces the transition by using only top grade, sustainable materials. We strive to raise the standards of environmental consciousness in the construction field and work with you to make your projects LEED® certifiable.



ARCHITECTURAL METALS



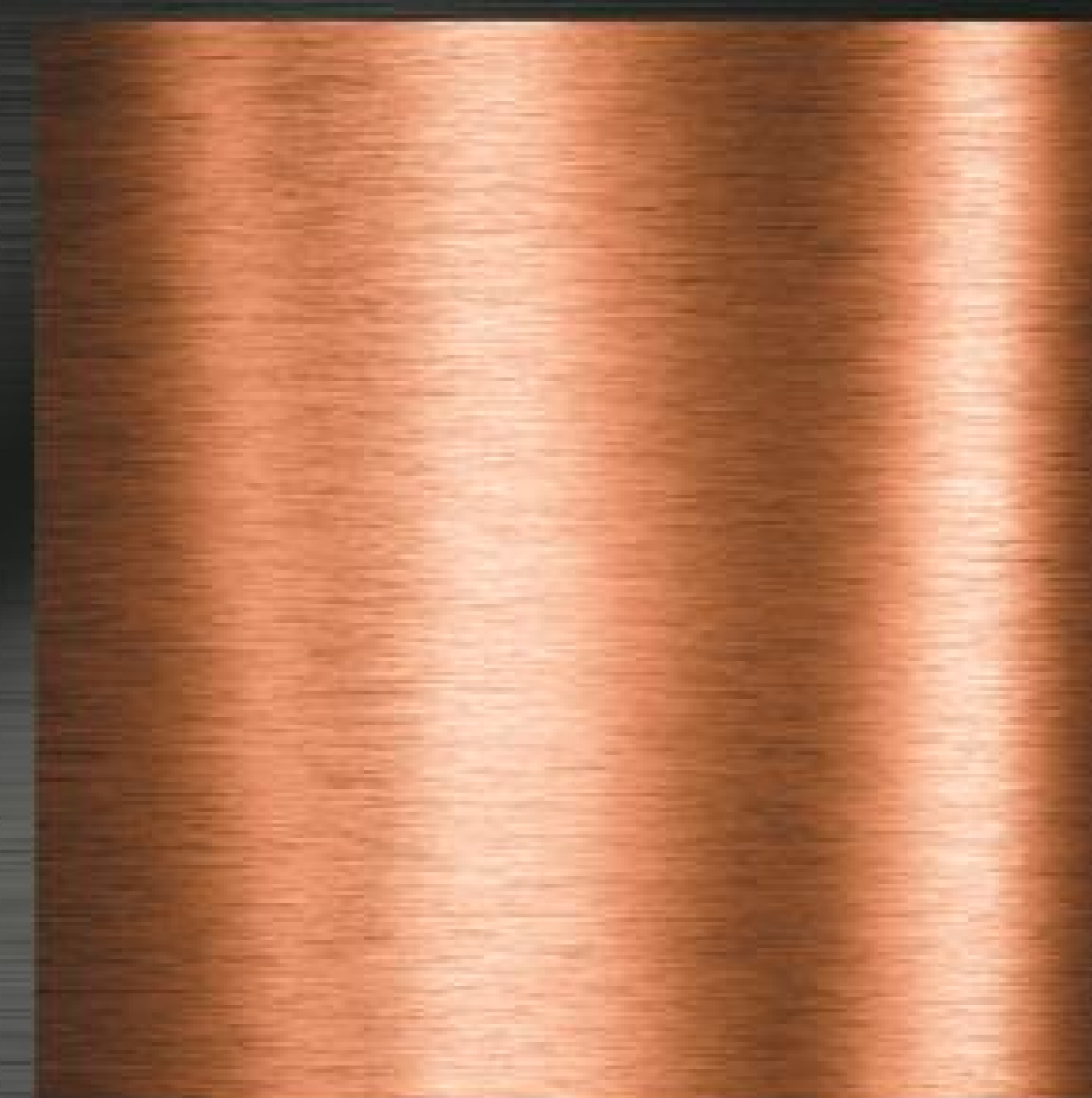
ELZINC®



STAINLESS STEEL



ALUMINUM



COPPER



TITANIUM



WEATHERING
STEEL

eZINC®

As a part of our **EcoChoice™** line of products, eZinc® is a sustainable material that does not harm the environment. Used for centuries, architects are taking a second look at zinc's unique properties and aesthetic qualities. Architectural grade zinc is infinitely recyclable. Replacement costs are immaterial with a life spanning 80 to 100 years for roofing and 120+ years for wall systems.

Applications: Roof, Facade, Flashings, + Interior/Exterior Elements

Finishes: eZinc® Natural, Slate®, + eZinc Rainbow®



Project: Wind Creek Casino
Location: Wetumpka, AL
Material: Natural Zinc
System: Flatlock Panels
Architect: Hnedak Bobo Group





Project: Private Residence on the Granadina Coast
Location: Salobreña, Spain
Material: elZinc® Natural
System: Flatlock Joint
Architect: GilBartolomé Architects



**beautiful. durable.
infinitely recyclable.**

elZinc Rainbow®

a new world of colors



red



blue



green



black



gold



brown

elZinc®



Natural

Slate®



Graphite®

STAINLESS STEEL

Stainless Steel has a natural beauty only outshined by its sustainability and eco-friendly qualities. This material has the ability to have a variety of finishes and techniques applied from perforation to metal burnishing. Known for its strength, high corrosion resistance, and aesthetic appearance, stainless steel provides a modern look for any building application.

Applications: Roof, Facade, +

Interior/Exterior Elements

Finishes: Mill, #3/#4 Polish, 2B,

2D, Bright Annealed, + Custom



Project: Children's Hospital Colorado

Location: Highlands Ranch, CO

Material: Stainless Steel #4

System: Flatlock Panels

Architect: FKP Architects





ALUMINUM

Aluminum's superb ductility, light weight, strength, and corrosion resistance in concert with its eco-friendly qualities and economic benefits have made this material a mainstream in construction for decades.

MetalTech-USA provides natural aluminum products with a myriad of specialty finishes and colors to satisfy even the most ambitious design.

Applications: Roof, Facade + Interior/Exterior Elements
Finishes: Anodized, Powder Coated, + Painted



Project: Owensboro-Daviess County Convention Center
Location: Owensboro, KY
Material: Anodized Aluminum
System: Vertical Interlocking Reveal Panels
Architect: Trahan Architects

COPPER

Copper has been used as an architectural cladding element for hundreds of years. Initially a bright metallic, copper reinvents its color as it patinas until its ultimate greenish verdigris forms. This patina serves as a protective coating affording the material its excellent corrosion resistance and durability. Copper also possesses impressive anti-microbial properties, making it ideal for use in interior applications.

Applications: Roof, Facade, Flashings, + Interior/Exterior Elements

Finishes: Mill + Custom Patina



Project: MWSU-McCoy
Engineering Hall
Location: Wichita Falls, TX
Material: Copper
System: Flatlock Panels
Architect: SHW Group



TITANIUM

Titanium, the “Rolls Royce” of architectural metals, is coveted by architects for its light weight, superior strength, and corrosion resistance. Its long life and environmental immunity stem from the formation of a stable, highly adherent, protective surface oxide film. This protective film makes it possible for titanium to perform well even in the most aggressive environments.

Applications: Roof, Facade + Interior/Exterior Elements
Finishes: Mill-GI + Custom



Project: 3 Palms Project
Location: Malibu, CA
Material: Titanium
System: Double Lock Standing Seam
Architect: John Turturro of Turturro Design Studio

WEATHERING STEEL

Weathering steel, often referred to as Cor-Ten or A606, is a unique material gaining popularity as of late for its distinctive rust patina. This natural yet stable protective coating acts as a defense against further corrosion. Weathering steel arrives unrusted and develops a rust-like appearance once exposed to the elements for a period of time.

Applications: Facade + Interior/
Exterior Elements
Finishes: Mill + Custom



Project: REI
Location: Dallas, TX
Material: A606 Weathering Steel
System: Flatlock Panels
Architect: Cunningham Group
Architecture



SYSTEMS

MetalTech-USA offers a variety of cladding systems for roofing and facade applications. From standard flatlock panels to customized panels, let our experienced staff assist in choosing the appropriate system to fit your specific project needs.

Every **MetalTech-USA** product is engineered and created for sustainability, beauty, and durability. We offer a wide assortment of colors, systems, and finishes that will help your architectural idea become a sustainable reality.



Project: Hall Office Park, T1
Location: Frisco, TX
Material: Preweathered Zinc
System: Interlocking Reveal
Panels
Architect: HKS Architects

REVEAL

The **MetalTech-USA** Reveal Panel System has endless possibilities in regard to design. These systems have a variable reveal width of 0-1," thus providing flexibility for the designer with vertical, horizontal, and diagonal orientation possible. Combining these options makes for a striking facade design.

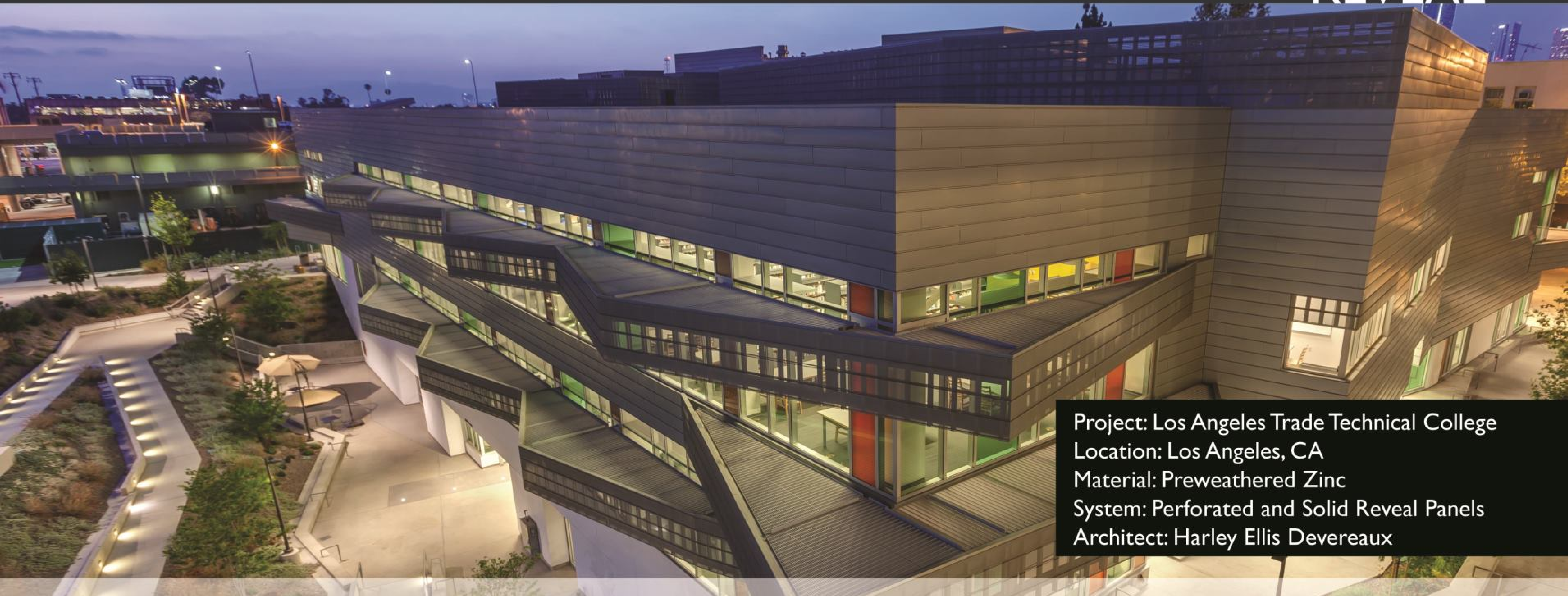
Material: Available in all **EcoChoice™** Materials
Applications: Facade + Soffit



Project: Owensboro-Daviess
County Convention Center
Location: Owensboro, KY
Material: Anodized Aluminum
System: Vertical Interlocking
Reveal Panels
Architect: Trahan Architects



REVEAL



Project: Los Angeles Trade Technical College
Location: Los Angeles, CA
Material: Preweathered Zinc
System: Perforated and Solid Reveal Panels
Architect: Harley Ellis Devereaux



FLATLOCK

Identified by flat tiles and overlapping seams, the flatlock system allows latitude in design capabilities by utilizing various sized tiles and manipulating the layout of seam lines.

MetalTech-USA Flatlock panels can be arranged horizontally, vertically, and diagonally along a facade or roof structure.

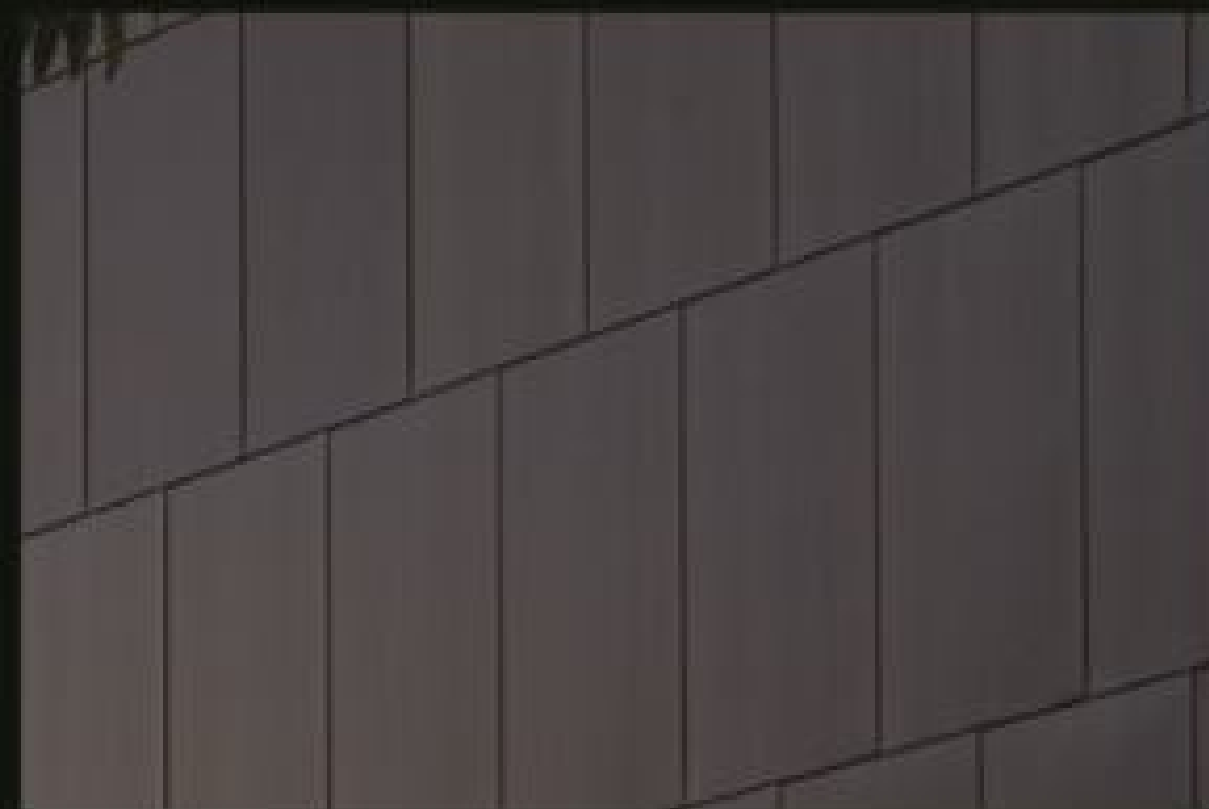
Material: Available in all

EcoChoice™ Materials

Applications: Roof + Facade

Available in 4 shapes:

Rectangular, Square, Diamond, Rhomboid



Project: Boeddeker Park
Location: San Francisco, CA
Material: Preweathered Zinc
System: Flatlock Panels
Architect: WRNS Studio



FLATLOCK



Project: Jackson Laboratory for Genomic Medicine
Location: Farmington, CT
Material: Preweathered Zinc
System: Rectangular Flatlock Panels
Architect: Centerbrook Architects & Planners and
Tsoi Kobus & Associates



STANDING SEAM

MetalTech-USA provides Standing Seam Panel Systems with the installer option to create a Double Lock or Angle Lock profile. The angled seam configuration of these systems provide strong, linear shadows. Standing Seam Panel Systems offer a variety of panel lengths and widths making it possible to achieve even the most complicated, visionary design.

Material: Available in all **EcoChoice™** Materials
Applications: Roof + Facade



Project: John Deere Corporate Aviation Facility
Location: Moline, IL
Material: Preweathered Zinc
System: Double Lock Standing Seam
Architect: OPN Architects



STANDING SEAM

Project: University of Tampa - Sykes Chapel
Location: Tampa, FL
Material: Preweathered Zinc
System: Curved Double Lock Standing Seam
Architect: tvsdesign

CORRUGATED

MetalTech-USA's Corrugated Systems are ventilated curtain screen systems used for their unique design capabilities with the slight exchange of light and shadow that vary depending upon corrugation height and profile. Systems available in Sinusoidal "wave" or Trapezoidal "box" corrugated profiles.

Material: Available in all

EcoChoice™ Materials

Applications: Roof + Facade

Profiles: Sinusoidal, Trapezoidal, + Custom



Project: Lake LBJ Retreat

Location: Marble Falls, TX

Material: Preweathered Zinc

System: Sinusoidal Corrugated Panels

Architect: Dick Clark

Architecture



CORRUGATED

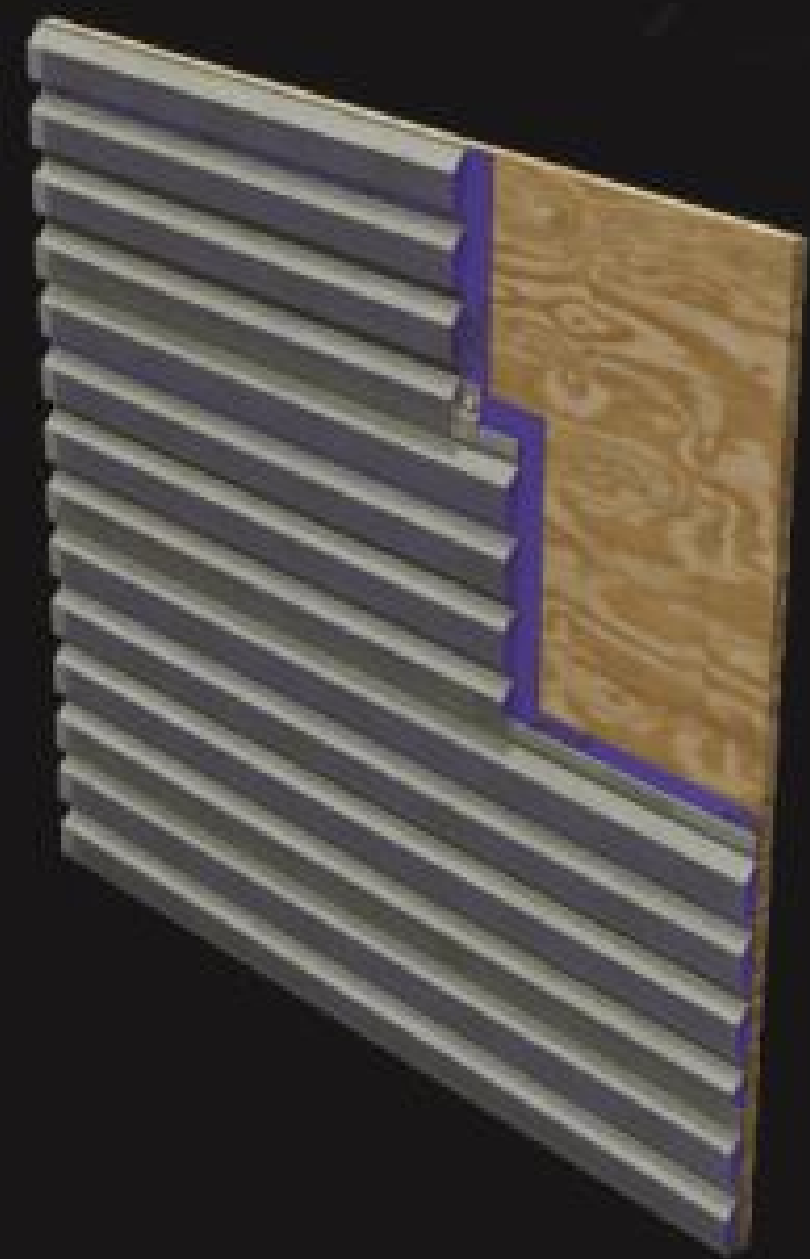


Project: Rantilla Residence
Location: Raleigh, NC
Material: Preweathered Zinc
System: Sinusoidal Corrugated Panels
Architect: Michael Rantilla



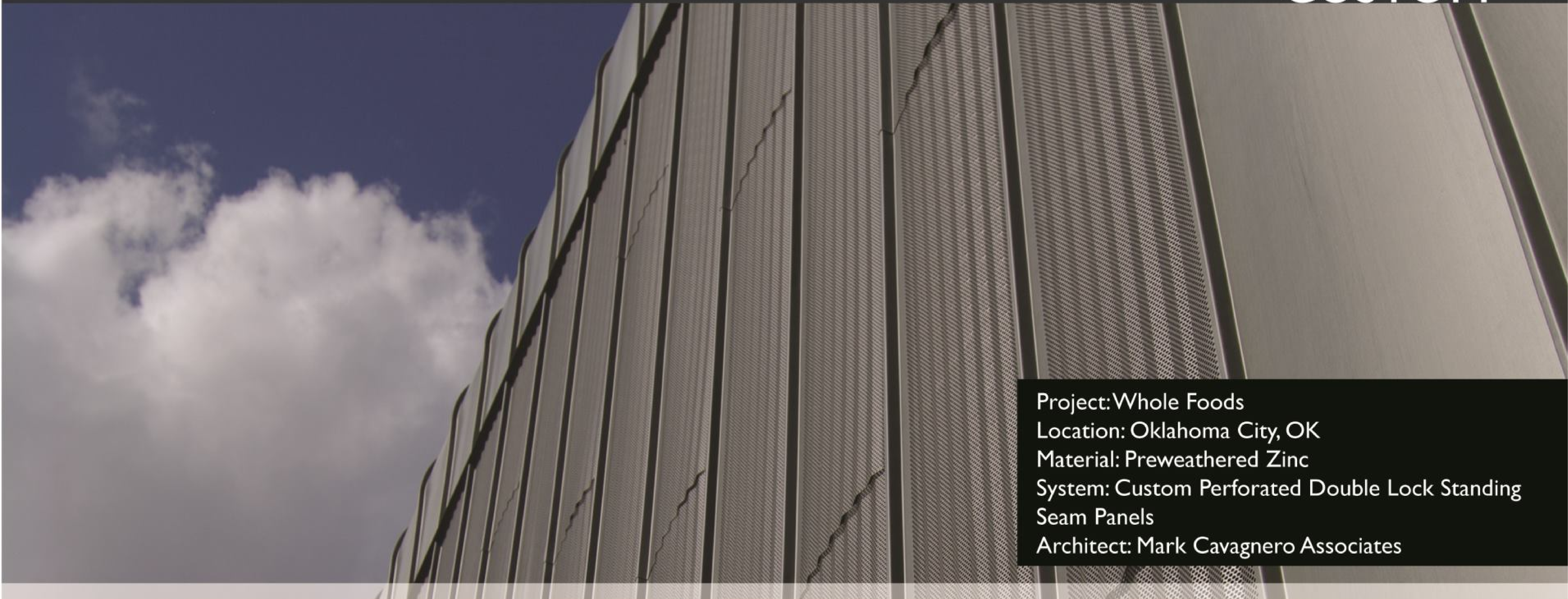
CUSTOM

MetalTech-USA systems provide anything but off the shelf solutions from custom perforation patterns to completely modified panel systems. **MetalTech-USA** provides innovative and economical solutions for projects requiring a unique edge. Our highly experienced staff work closely with architects and designers to create a workable solution for their creative vision.

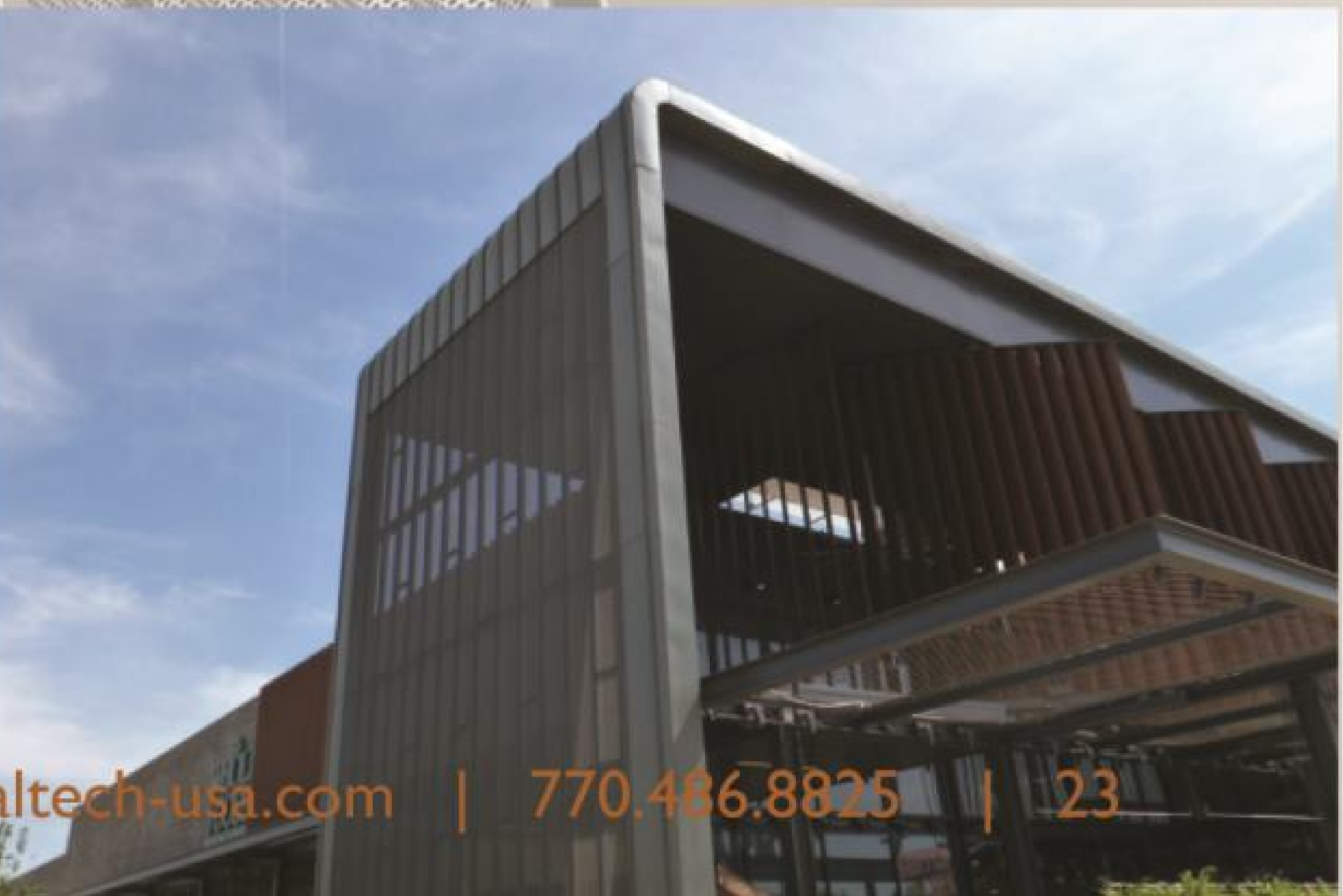


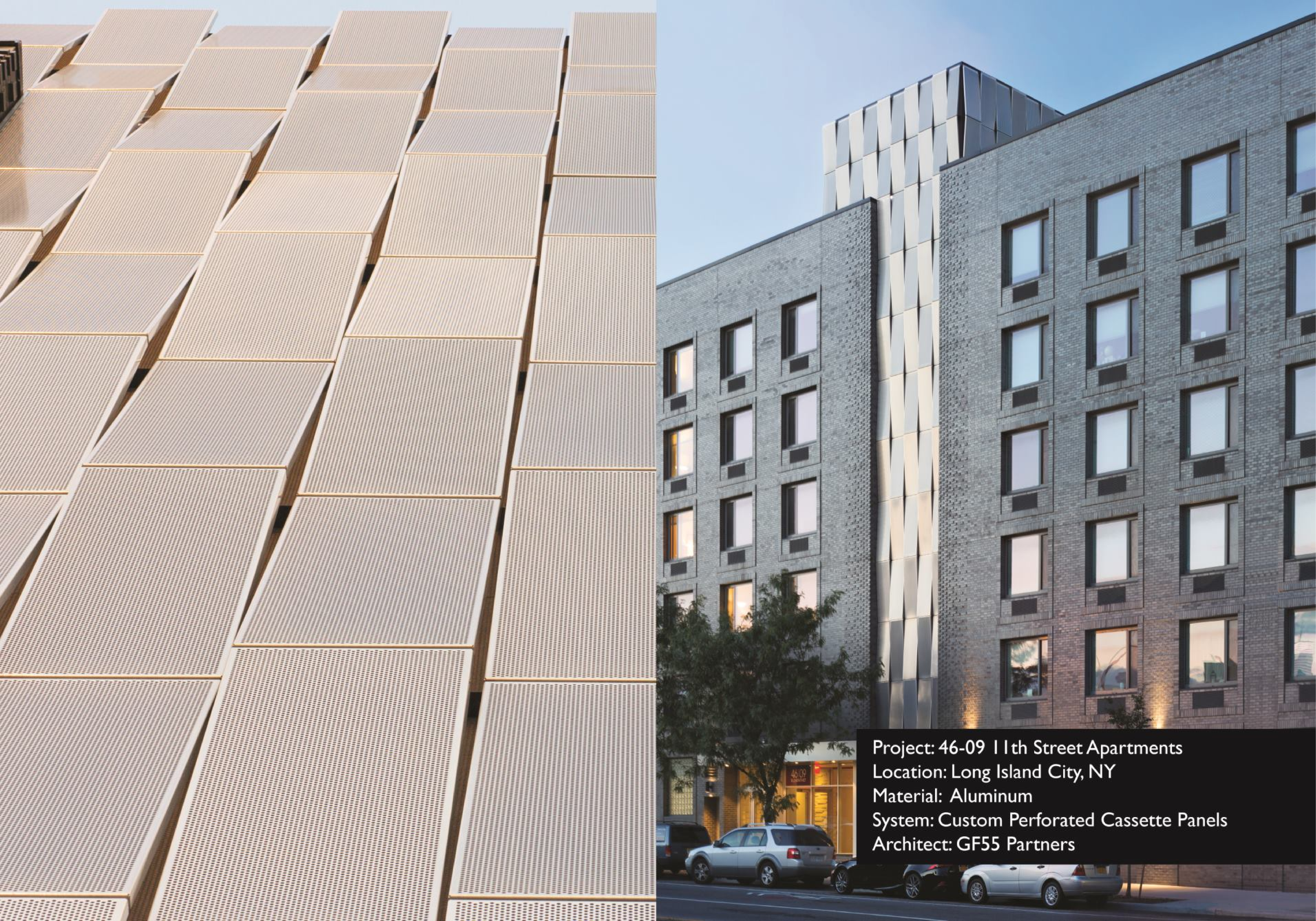
Project: City Point
Location: Brooklyn, NY
Material: Preweathered Zinc
System: HV90
Architect: COOKFOX
Architects

CUSTOM



Project: Whole Foods
Location: Oklahoma City, OK
Material: Preweathered Zinc
System: Custom Perforated Double Lock Standing Seam Panels
Architect: Mark Cavagnero Associates





Project: 46-09 11th Street Apartments
Location: Long Island City, NY
Material: Aluminum
System: Custom Perforated Cassette Panels
Architect: GF55 Partners

CUSTOM

CHELSEA TELEVISION STUDIOS

Project: Chelsea Studios
Location: New York, NY
Material: Copper Clad Stainless Steel + Painted Aluminum
System: Custom Solid + Perforated Cassette Panels
Architect: La Linea Architecture

SURFACE TEXTURES

MetalTech-USA custom fabrication capabilities include, but are not limited to striation, perforation, PixArt, Prisma, and custom patinas. We are capable of creating an infinite number of design concepts for architects looking to exude a unique and artistic object, perspective, picture, and more. Our custom fabrication methods create textured, non-textured, and 2D visuals. Textures can be applied to any of our **EcoChoice™** metals and customized to fit any idea, vision, and need.



Project: Highline Ballroom
Location: New York, NY
Material: Custom Blackened Steel with Clear Coat
System: Custom Perforated Panels
Architect: DXA Studio

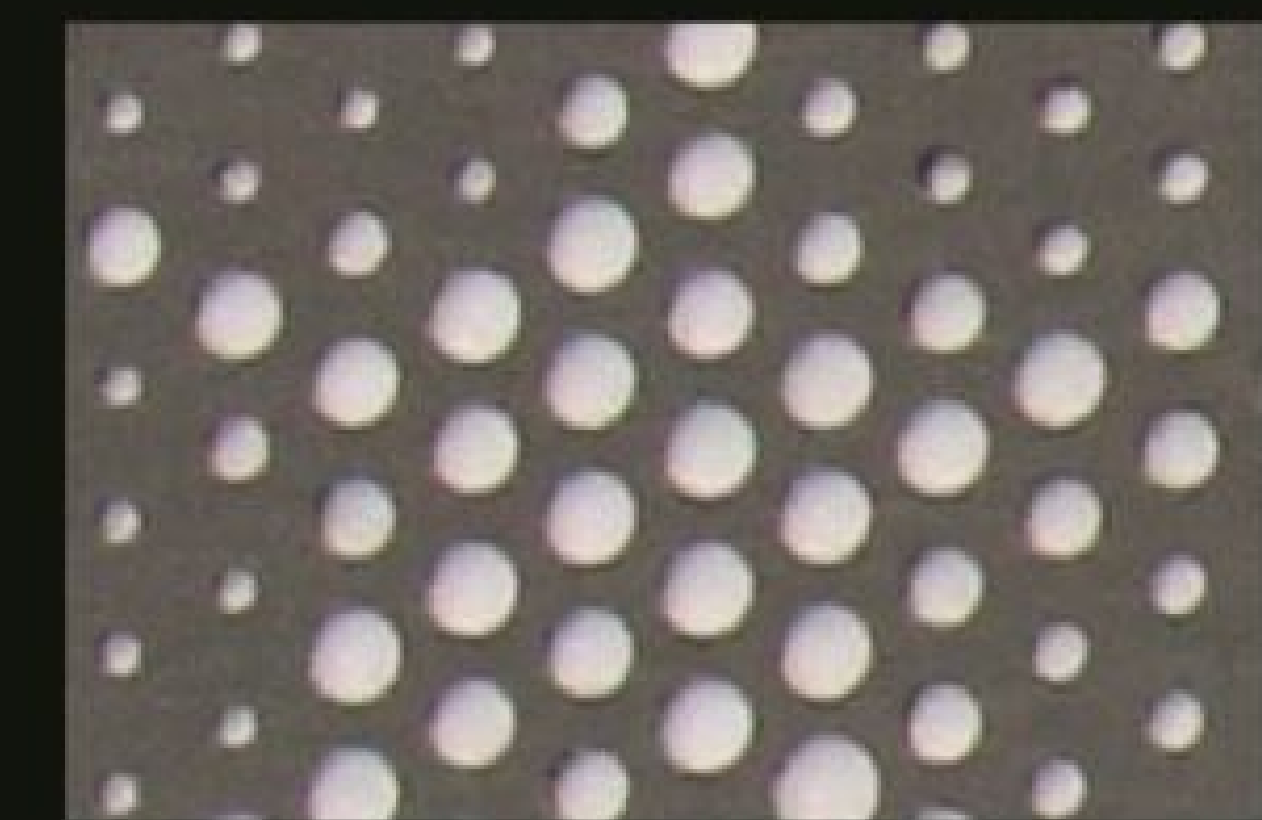


PIXART

Pixelated artwork. Transform an ordinary piece of metal into a work of art. This method mechanically renders realistic images onto architectural grade metals without the use of pigmentation. PixArt utilizes varying size perforations and the space between them to craft an image that is true to life.

Benefits:

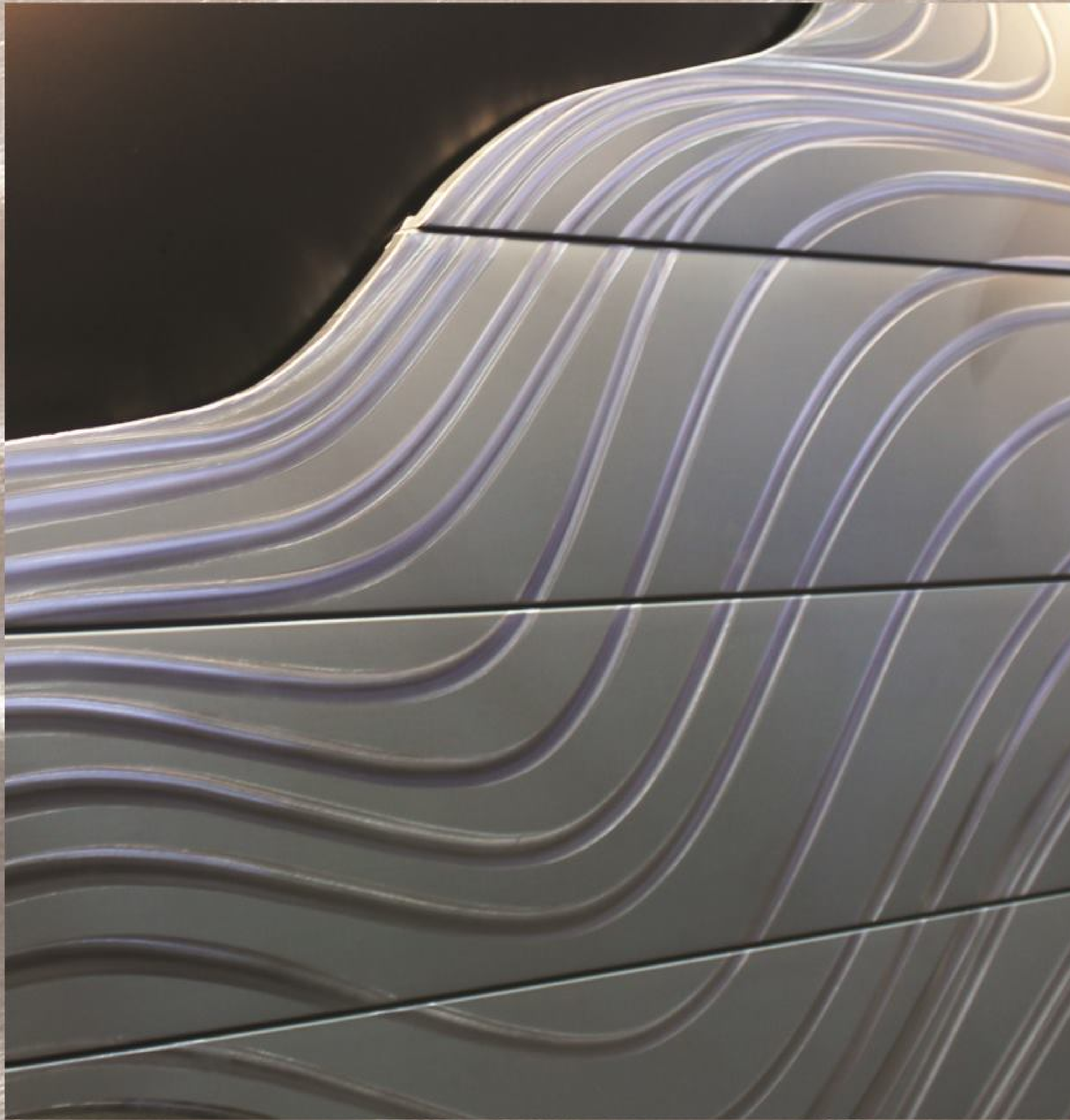
- Permanent, non-fading, non-removable
- Suitable for any image, fine art or mural
- Applicable for interior or exterior installation
- Ventilated through pixel perforations



PERFORATED

MetalTech-USA is able to create custom perforated patterns and shapes with our millimeter accurate CNC machine and other latest fabrication technology. With these technologies, our architect support staff can realize an unlimited variety of folded and perforated panel designs. **MetalTech-USA** produces custom soffit systems, wall screens, cassettes, or panel inserts with any of our architectural metals. Perforation provides architects a way to create unique designs without restraints. Choose one of our standard patterns or customize a pattern specific for your design.

Project: Empire City Casino
Location: Yonkers, NY
Material: Preweathered Zinc
System: Custom Flatlock Panels
Architect: Studio V Architecture



PRISMA

Prisma is a metal burnishing technique in which a 2D image is mechanically rendered onto the metal's surface. The dispersion of light and reflection from the surface of the material produces the illusion of 3D form.

MetalTech-USA has standard patterns available or one can be custom designed to fit your specific project requirements. Prisma can be applied to any of our **EcoChoice**™ materials but stainless steel applications are recommended.



Project: Custom Feature Wall
Location: Atlanta, GA
Material: Preweathered Zinc
System: Reveal Panels

SERVICES

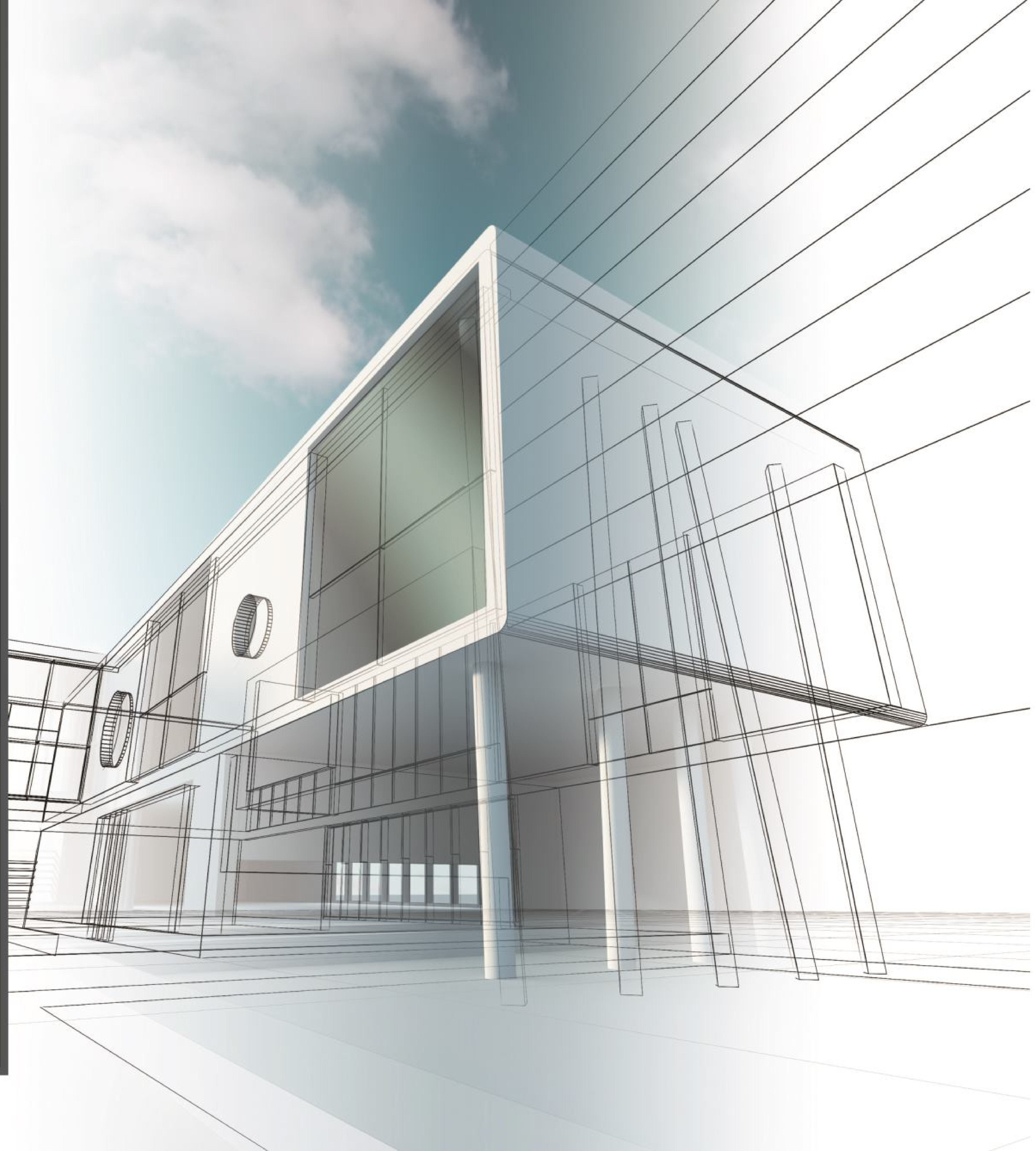
Our knowledgeable staff at **MetalTech-USA** can help streamline the design process. We work closely with designers, engineers, and installers alike to provide the best solutions to even the most complex design issues. From conception to completion, **MetalTech-USA** provides services to support every stage of your project.

Services:

- Design Assist
- Architectural Support
- Shop Drawings
- Engineering
- Installation Training
- Product Rendering



How Can We Help You?



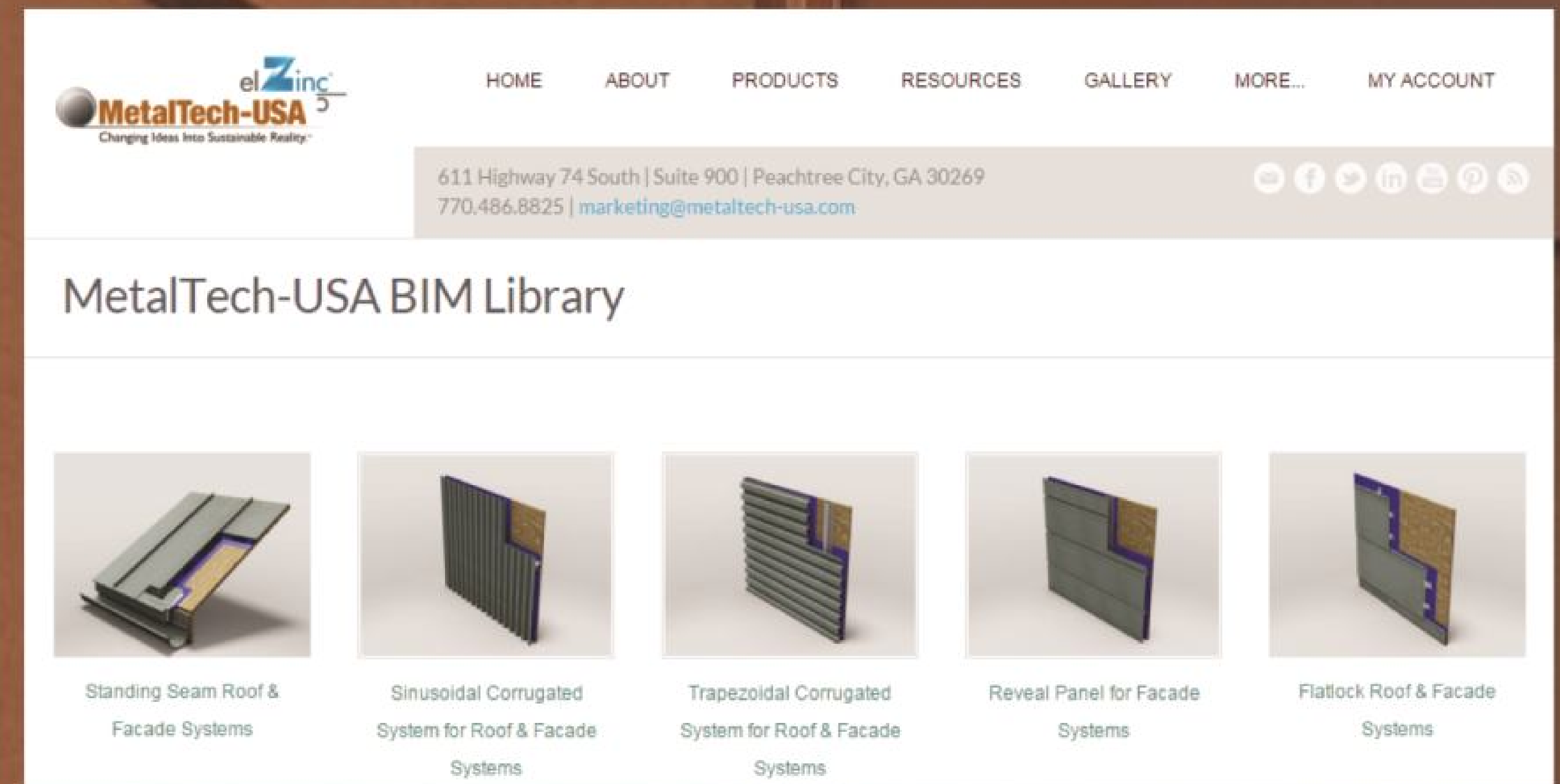
BUILDING INFORMATION MODEL

(BIM)

MetalTech-USA has joined the next wave of architectural excellence with the development of BIM content.

MetalTech-USA systems have been developed as adaptive components by Autodesk along with a library of material finishes and finishing options.

Download
MetalTech-USA BIM
Content:
-seek.autodesk.com
-www.metaltech-usa.com



SPECS

Looking for more information on our materials and/or systems. Download New MetalTech-USA Technical Specification Sheets.
-Product Data Sheets
-3-Part CSI Approved

CASE STUDY



Architect: Trahan Architects
Installer: F.L. Crane
General Contractor: Denark
Construction, Inc.
Project Size: 100,000 sq. ft.



CASE STUDY

OWENSBORO-DAVISS COUNTY CONVENTION CENTER OWENSBORO, KY



Objective:

The design team at Trahan Architects, led by Brad McWhirter, desired a sleek, metal cladding for the exterior of the Owensboro-Daviess County Convention Center, a multi-purpose facility in Owensboro, Kentucky.

MetalTech-USA Solution:

The modern and simple design by Trahan Architects required a great deal of one-off panel fabrication to fit tight design specifications. **MetalTech-USA** worked closely with Trahan Architects and Lorin Industries in creating this design and promoting the anodized aluminum finish for the wall panels of the Owensboro Convention Center. Integral in achieving this look, is the rainscreen system engineered and fabricated by

MetalTech-USA.

This system, composed of roughly 100,000 square feet of Anodized Aluminum Vertical Interlocking Reveal Panels, was designed with minimal flashing and panel joints to create the streamlined exterior.

Because of the nature of the angular wings at the north and south ends of the building, in combination with the vertical orientation of the panel system, hundreds of panels were left with ranging lengths that required angled panels. Each panel had to fit in a specific location otherwise it would be rendered useless. This required a great deal of logistical planning, detailed field verification by the installer, and tight fabrication tolerances.

The anodized aluminum by Lorin Industries shows off the beauty and natural look of aluminum. The finish is in BlackMatt Long Line Brush and really captivates the aesthetics. This particular juxtaposition of color and finish achieves the ultra-sharp, clean look favored by Trahan.



Changing Ideas Into Sustainable Reality.™

611 Highway 74 South | Suite 900
Peachtree City, GA 30269

770.486.8825 | www.metaltech-usa.com