

TECHNICAL SPECIFICATION GUIDE

MODELS



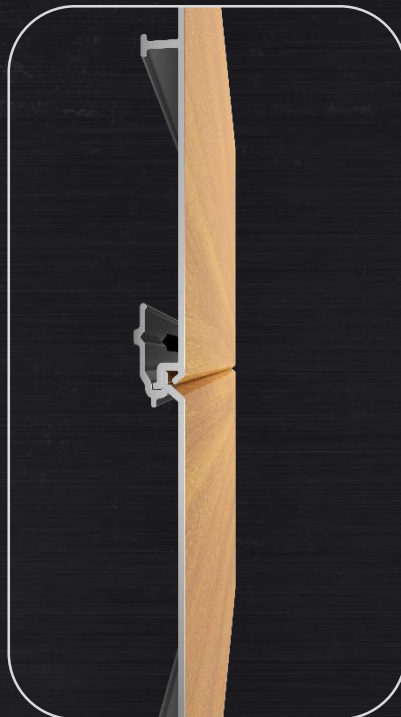
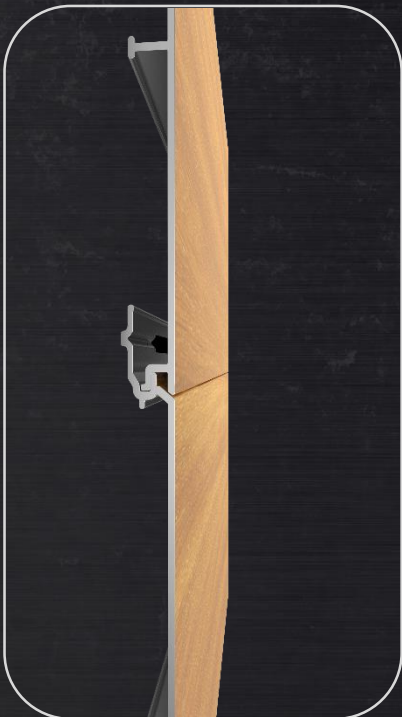
4", 6" and 8" Flat



3", 4" and 6" V Groove



6" Channel



TECHNICAL SPECIFICATION GUIDE

3" PLANK



SPECIFICATIONS	PROFILE F 3" Flat Plank	PROFILE V 3" V Groove Plank	PROFILE C 3" Channel Plank
Overall Dimensions	N/A	3.69" x 16' (19.3 cm x 4.88 m)	N/A
Material Thickness	N/A	0.062" (0.15 cm)	N/A
Exposed Dimensions	N/A	3" (7.6 cm)	N/A
Plank Weight	N/A	2.87 lbs (1.3 kg)	N/A
Pieces per Carton	N/A	12	N/A
Square Feet per Carton	N/A	48	N/A
Carton Dimensions	N/A	4.9" x 4" x 16'4"	N/A
Carton Weight	N/A	36 lbs (13,43 kg)	N/A

All our profiles have a length of 16 feet (4.88 meters)

TECHNICAL SPECIFICATION GUIDE

4" PLANK



SPECIFICATIONS	PROFILE F 4" Flat Plank	PROFILE V 4" V Groove Plank	PROFILE C 4" Channel Plank
Overall Dimensions	4.731" x 16' (12.02 cm x 4.88 m)	4.695" x 16' (11.9 cm x 4.88 m)	N/A
Material Thickness	0.062" (0.16 cm)	0.062" (0.16 cm)	N/A
Exposed Dimensions	4" (10.16 cm)	4" (10.16 cm)	N/A
Plank Weight	7.23 lbs (3.28 kg)	7.17 lbs (3.25 kg)	N/A
Pieces per Carton	18	18	N/A
Square Feet per Carton	96	96	N/A
Carton Dimensions	6" x 6" x 16'4"	6" x 6" x 16'4"	N/A
Carton Weight	132 lbs (60 kg)	132 lbs (60 kg)	N/A

All our profiles have a length of 16 feet (4.88 meters)

TECHNICAL SPECIFICATION GUIDE

6" PLANK



SPECIFICATIONS	PROFILE F 6" Flat Plank	PROFILE V 6" V Groove Plank	PROFILE C 6" Channel Plank
Overall Dimensions	6.731" x 16' (17.1 cm x 4.88 m)	6.695" x 16' (17 cm x 4.88 m)	6.695" x 16' (17 cm x 4.88 m)
Material Thickness	0.068" (0.17 cm)	0.068" (0.17 cm)	0.068" (0.17 cm)
Exposed Dimensions	6" (15.24 cm)	6" (15.24 cm)	6" (15.24 cm)
Plank Weight	10.43 lbs (4.73 kg)	10.34 lbs (4.69 kg)	10.34 lbs (4.69 kg)
Pieces per Carton	12	12	12
Square Feet per Carton	96	96	96
Carton Dimensions	8" x 4" x 16'4"	8" x 4" x 16'4"	8" x 4" x 16'4"
Carton Weight	125 lbs (57 kg)	125 lbs (57 kg)	125 lbs (57 kg)

All our profiles have a length of 16 feet (4.88 meters)

8" PLANK



SPECIFICATIONS	PROFILE F 8" Flat Plank	PROFILE V 8" V Groove Plank	PROFILE C 8" Channel Plank
Overall Dimensions	8.243" x16' (20.94 cm x 4.88 m)	N/A	N/A
Material Thickness	0.09" (0.23 cm)	N/A	N/A
Exposed Dimensions	7.5" (19.05 cm)	N/A	N/A
Plank Weight	15.9 lbs (7.20 KG)	N/A	N/A
Pieces per Carton	10	N/A	N/A
Square Feet per Carton	100	N/A	N/A
Carton Dimensions	9.5" x 3" x 16'4"	N/A	N/A
Carton Weight	158 lbs (72 KG)	N/A	N/A

All our profiles have a length of 16 feet (4.88 meters)

TECHNICAL SPECIFICATION GUIDE

ACCESSORIES

A



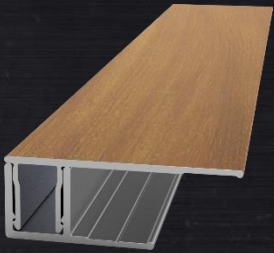
Starter Strip

B



J-Trim 1" – Two Pieces

C



J-Trim 1 3/4" – Two Pieces

D



H-Trim – Two Pieces

SPECIFICATIONS	A	B	C	D
Overall Dimensions	1.829" (4.65 cm)	Base:1.130" (2.87 cm) Cap:1.130" (2.87 cm)	Base:1.130" (2.87 cm) Cap:1.75" (4.45 cm)	Base:1.589" (4.04 cm) Cap:1.657" (4.21 cm)
Material Thickness	0.06" (0.15 cm)	0.055" (0.14 cm)	0.055" (0.14 cm)	0.055" (0.14 cm)
Piece Weight	2.56 lbs (1.16 kg)	4.25 lbs (1.93 kg)	4.92 lbs (2.23 kg)	4.96 lbs (2.25 kg)
Pieces per Carton	1	1	1	1
Square Feet per Carton	N/A	N/A	N/A	N/A
Carton Dimensions	2" Ø x 12'6"	2" Ø x 12'6"	2" Ø x 12'6"	2" Ø x 12'6"
Carton Weight	4.56 lbs (2.07 kg)	6.25 lbs (2.83 kg)	6.92 lbs (3.14 kg)	6.96 lbs (3.16 kg)

Length of Accessories A, B, C, D : 12 feet (3.66 meters)

ACCESSOIRES



Outside Corner – Two pieces



4" and 6" Ventilated Plank

SPECIFICATIONS	E	F
Overall Dimensions	Base:2.033" (5.16 cm) Cap:2.003" (5.09 cm)	4.731" x 8' (12.02 cm x 2.44 m)
Material Thickness	0.055" (0.14 cm)	0.062" (0.16 cm)
Piece Weight	8.09 lbs (3.67 kg)	3.62 lbs (1.64 kg)
Pieces per Carton	1	1 6
Square Feet per Carton	N/A	5.33 et 32
Carton Dimensions	3" Ø x 12'6'	6" x 1" x 8'4" 6" x 6" x 8'4"
Carton Weight	11.09 lbs (5.03 kg)	7.23 lbs (3.28 kg) 43.38 lbs (19.68 kg)

Length of accessory E : 12 feet (3.66 meters)

Length of accessory F : 8 feet (2.44 meters)