

SWISSPEARL

Facades





Index

About Swisspearl

Material and sustainability	10–11
Tradition and strong values	12–13
Rear-ventilated facade system	14–15

Color Families

Natural	
Carat	18–23
Gravial	24–27
Vintago	28–31
Avera	32–35
Reflex	36–39
Nobilis	40–43
Terra	44–47
Planea	48–51
Zenor	52–55
Authentic	
Patina Original NXT	56–59
Patina Inline NXT	60–63
Patina Rough NXT	64–67
Patina Structure NXT	68–71



Designing Possibilities

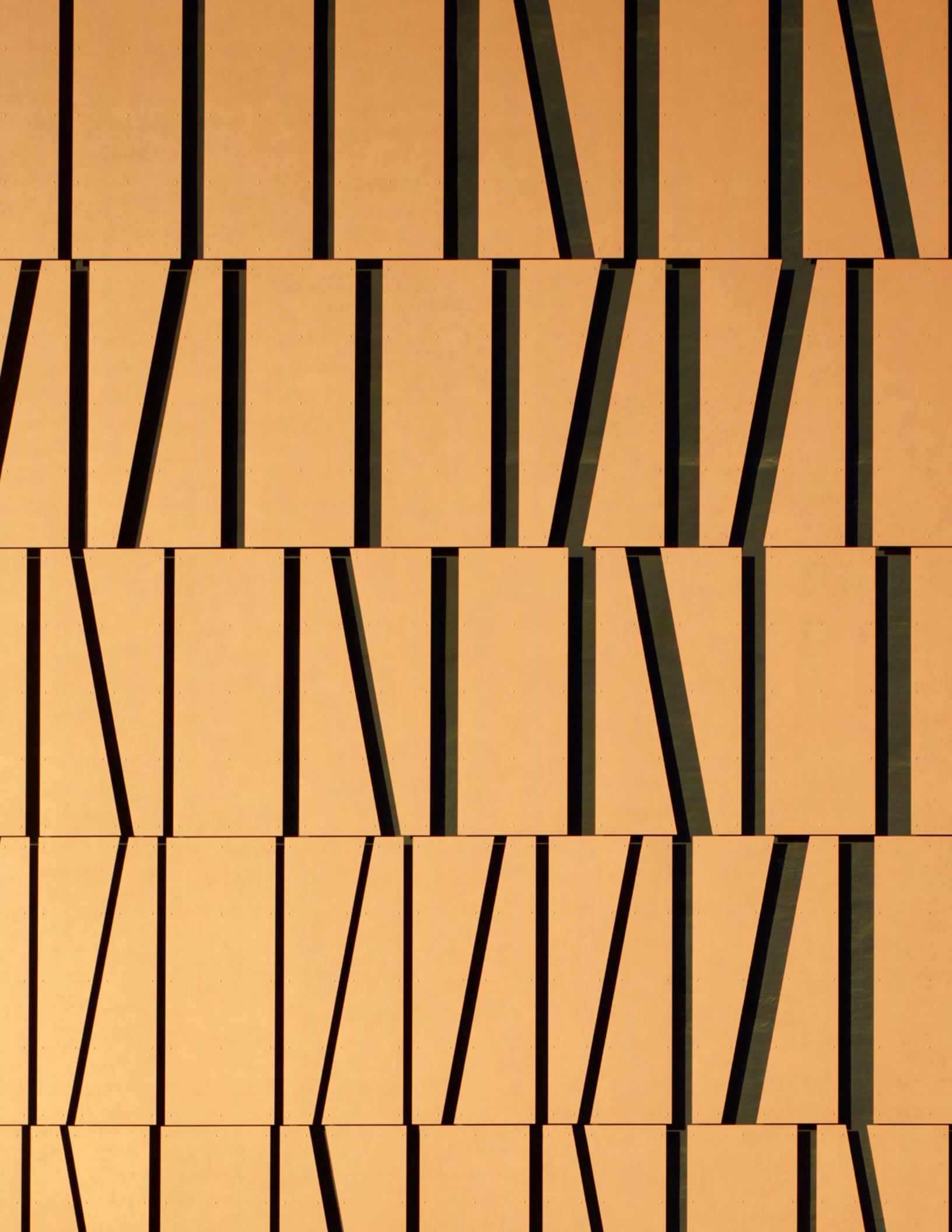
Freeform	74-75
Custom Cut	76-77
Engravings	78-79
Perforation	80-81

Service

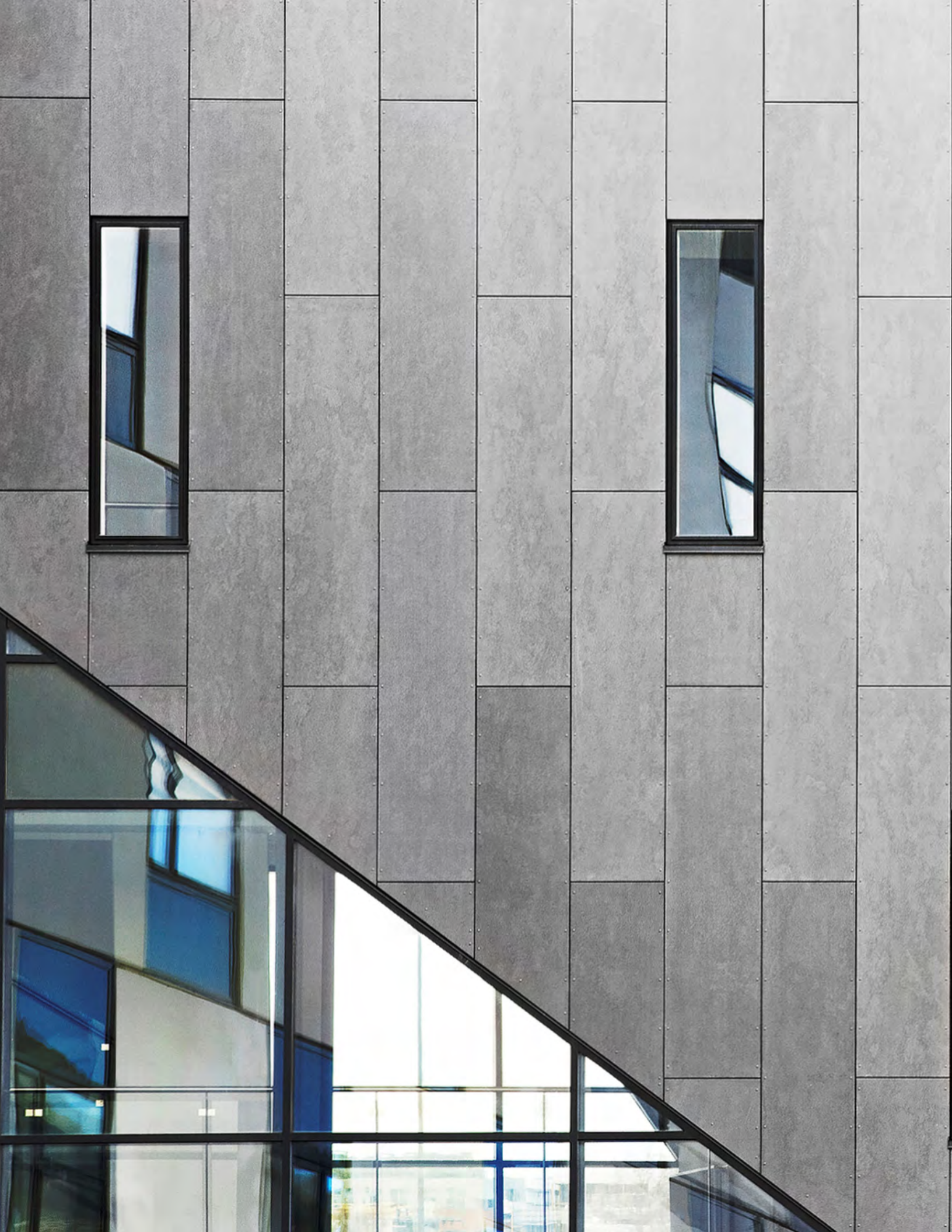
Warranty and material properties	82
Advice	83

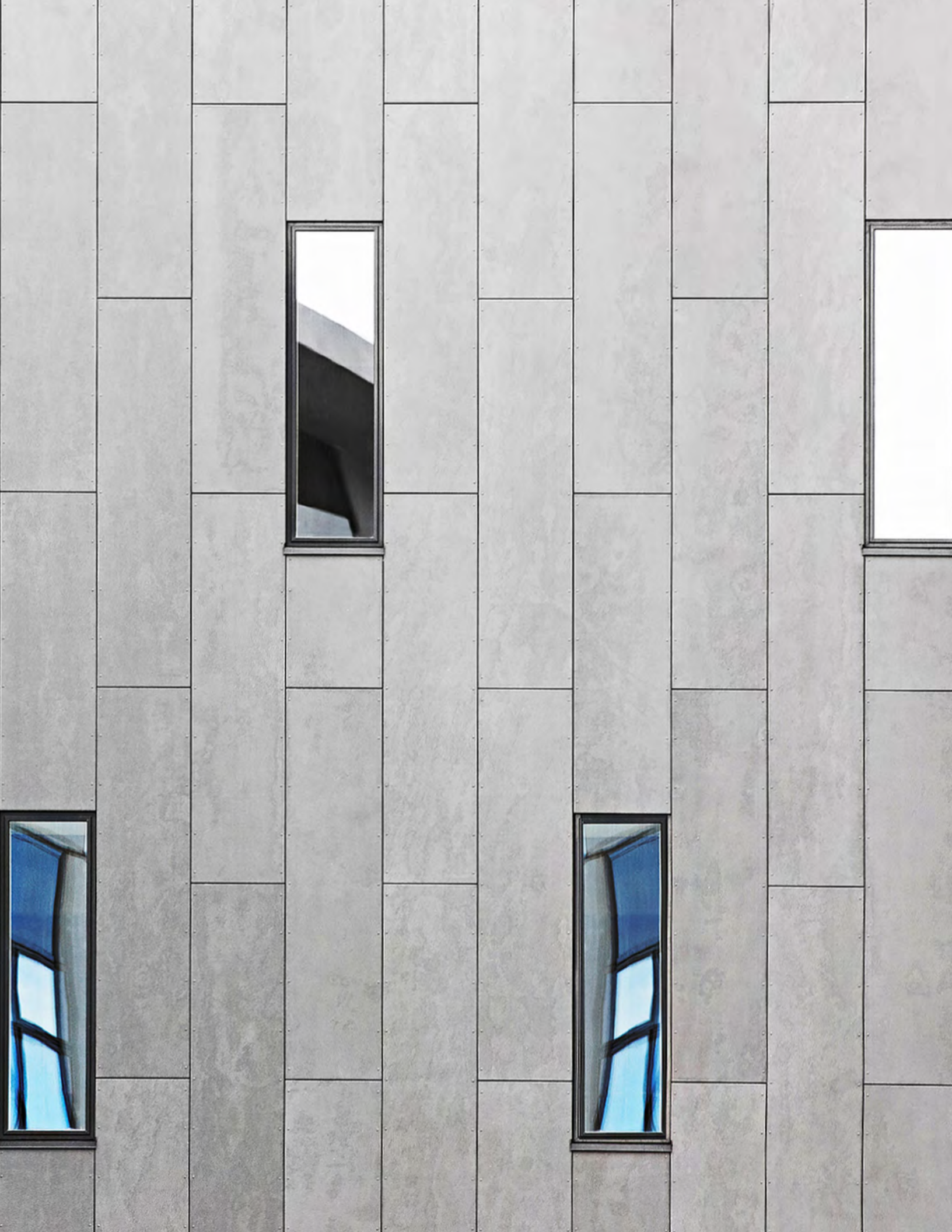
















Respect for people and the environment



Fascination with fiber cement – a highly resistant and durable building material

Fiber cement has long been a trusted material in design and construction thanks to its wet formability and exceptional strength when dry. Its durability and reliability come from a precise material composition that is continuously researched and refined. The production process combines decades of traditional manufacturing expertise with ongoing innovation based on the latest findings.



Our fiber cement is made from cement, pulp, water, plastic fibers, and air. Together, these ingredients create a durable building material that is lightweight compared to other cement-based materials. Handling the material reveals its homogeneous nature and surface quality. Its appearance highlights its unique character and natural texture.



Fiber cement is an extremely versatile material that can be used in a wide range of applications. Carefully selected raw materials and a consistently inventive spirit are at the heart of a product that has remained on trend for over 100 years and become an integral part of architecture.

Tradition and innovation – We build on strong values



As a Swiss family-owned company, we think in terms of generations. For decades, we have done what we do best: with curiosity, passion, and commitment, we create innovative and durable fiber cement products for facades, interior finishing, and gardens.

The headquarters of today's Swisspearl Group are located in Niederurnen, Switzerland, where one of the first fiber cement production facilities was founded in 1903. The success story of fiber cement began earlier, in 1894, in Vöcklabruck, Austria, where it was invented by Ludwig Hatschek.

Today, we combine a proven traditional production process with state-of-the-art technology. We are proud to be a leader in the innovation and advancement of this material, which is used worldwide in architecture and living spaces.

Swisspearl stands for Swiss quality – worldwide.



It is our declared goal to become the global leader in high-quality fiber cement. By setting our sights a little higher, thinking a little further ahead, and delivering achievements that go beyond those of others, we transform living spaces into places where people feel at home. This ambition is built on more than 125 years in business and a legacy of pioneering spirit, expertise, and the courage to break new ground for a stable future.



Every step counts in construction projects, and the same applies to manufacturers. With a long tradition behind our group of companies, our experienced employees produce high-quality fiber cement products from carefully selected raw materials with expertise, precision, and craftsmanship. This interplay between tradition and innovation has made fiber cement a trusted building material worldwide for over 100 years.

Building for the long term with Swisspearl

The rear-ventilated mounted facade

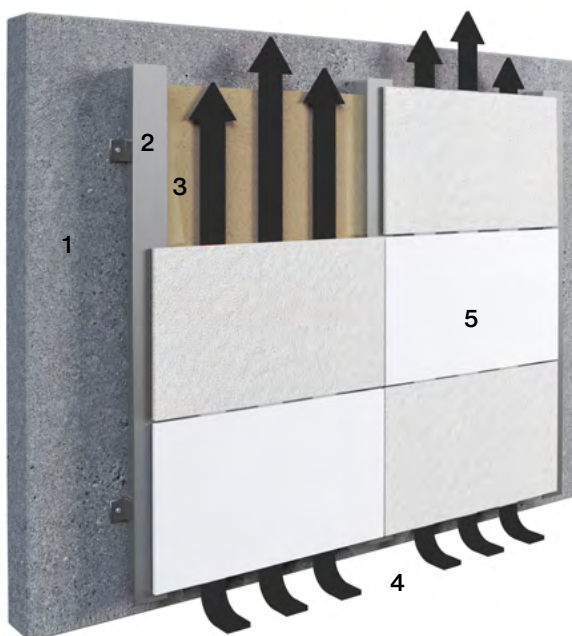
With Swisspearl, you are choosing a premium supplier of rear-ventilated mounted facades. A wide range of facade construction types and materials is available. The rear-ventilated mounted facade is regarded as a high-quality, ecological solution. No other facade system meets the requirements for heat and moisture protection, as well as fire and sound insulation, in such a simple and visually appealing way.

Energy-efficient

The intelligent layer structure of the rear-ventilated mounted facade ensures that each function of the outer wall is optimally supported. Moisture cannot penetrate from the outside into the masonry and insulation, while the rear-ventilated space allows moisture from inside the building to dry efficiently. This increases energy efficiency and supports a healthy indoor climate all year round.

Durable and economical

A facade with Swisspearl fiber cement panels delivers outstanding thermal and weather protection, while remaining exceptionally easy to maintain. This ensures long-term comfort and functional reliability. Reduced susceptibility to damage also helps minimize unpredictable costs. Swisspearl facades stand for lasting protection, comfort, and cost-effectiveness, providing a secure building shell for decades.



1 Supporting structure, 2 Substructure, 3 Thermal insulation, 4 Rear ventilation space, 5 Swisspearl fiber cement panels

Mounting types

In addition to colors, formats, and surface structures, facade design also includes a choice of mounting methods. Different mounting options offer a wide range of design possibilities. Swisspearl facade panels can be installed with both visible and invisible solutions. Swisspearl offers a complete system that includes the fiber cement panels and the corresponding mounting technology.



Visible mounting of the fiber cement panels with colored rivets

Visible mounting

Rivets or screws are used for visible mounting. Their color can be chosen to either create contrast or blend in with the facade panel. This creates facades that are either vibrantly contrasting or classically simple.



Visible mounting combined with the Closed Corner 90° system



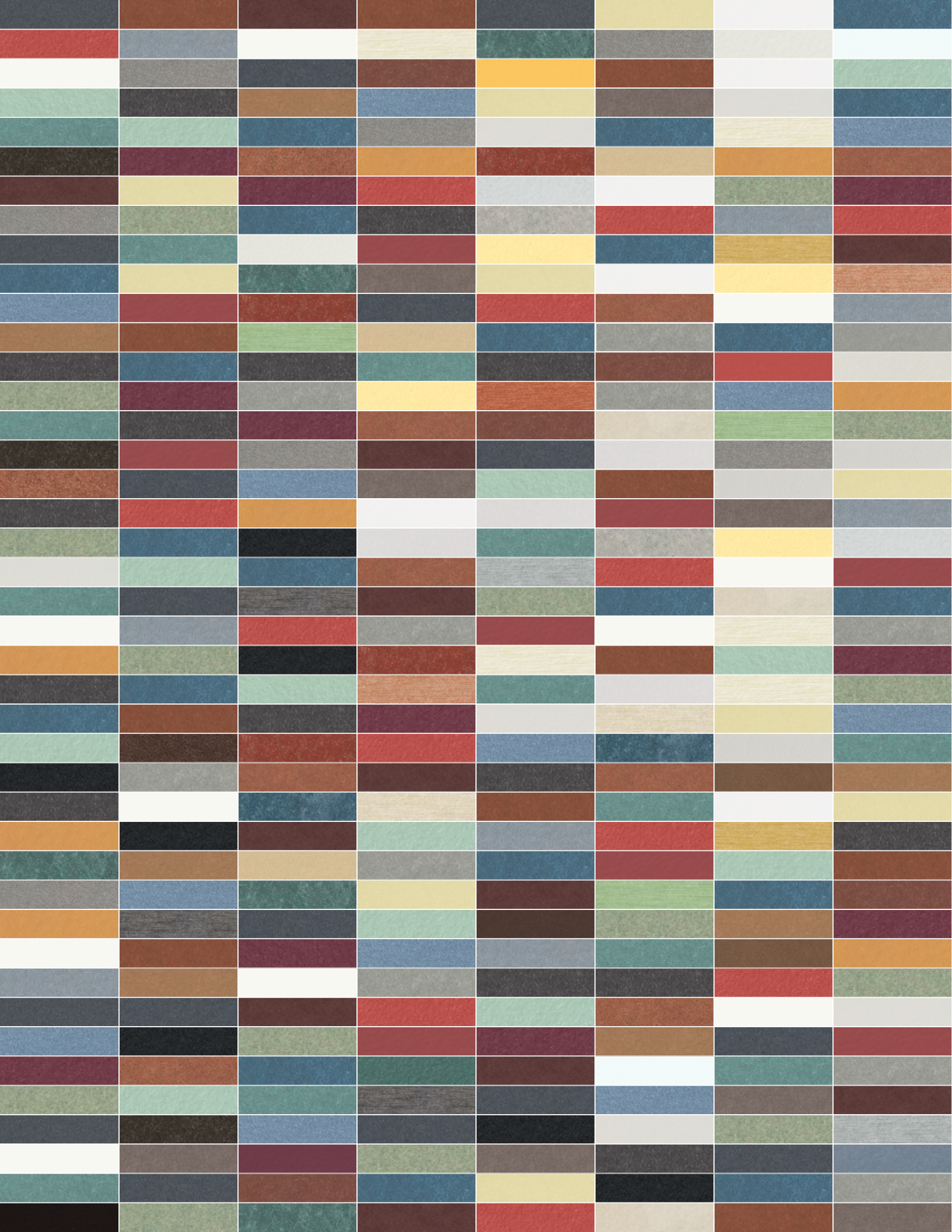
Invisible mounting with the Swisspearl Sigma 8 Pro system

Invisible mounting

We offer various invisible mounting options for Swisspearl facade panels, developed in-house by Swisspearl or in cooperation with our partners. Invisible mounting gives the building envelope a clean, elegant look. The panels are secured with anchors and brackets on the back, keeping the fiber cement surface fully visible from the front without rivets or screws.

Closed Corner 90°

The system has a modern, monolithic appearance that integrates seamlessly into a wide variety of architectural concepts. All fastening elements of the Closed Corner 90° are invisibly integrated, maintaining a clear, minimalist look without distracting details. This gives architects maximum design freedom, as the homogeneous surface and precise edges emphasize the architectural expression of surfaces and lines.





SWISSPEARL COLOR RANGE

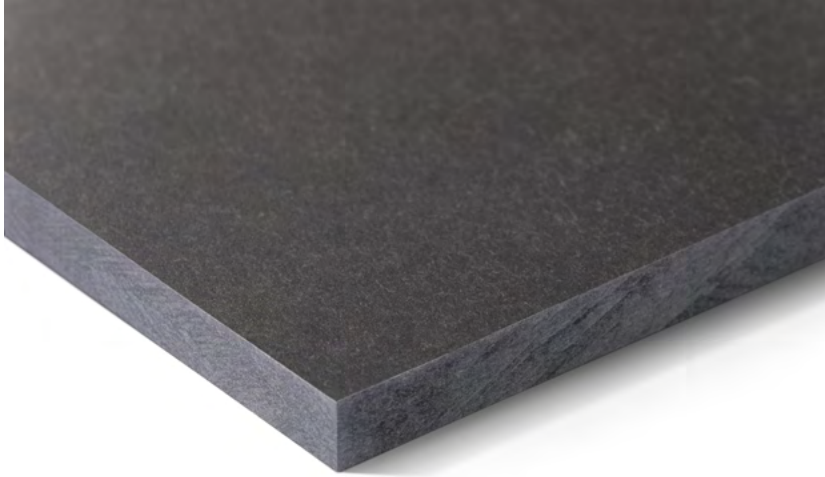
The image is a vertical composition of four distinct, textured paper layers. The top layer is a small white rectangle. Below it is a wide teal band. The next layer is a grey band, and the bottom-most layer is a wide blue band. All layers have a visible fibrous texture.

CARAT

Unique natural look and timeless beauty.
The translucent, slightly pigmented surface
adds to its expressive appearance.



CARAT



The naturally dried Carat color line creates a clear, expressive look with a translucent, lightly pigmented surface. The fiber cement panels are colored through, creating monolithic and elegant-looking building envelopes.

The twenty shades of the Carat color line range from light to dark and from cool to warm tones, creating a particularly varied color spectrum. Carat is understated yet distinctive, offering numerous color combinations.

Carat is also available with a special HR coating that offers greater scratch resistance and protection against heavy soiling and graffiti.



House RnEve, Mönchhof, Austria. Architect: ad2 Architekten, Weiden am See, Austria. Photographer: Meraner & Hauser OHG/SNC, Bolzano, Italy.

Technical data

Panels

The panel is colored through.
Coating: Translucent lightly pigmented

Panel format

Swisspearl Largo:

Maximum usable format
120.08" x 49.21" (3050 x 1250 mm),
panel thickness 0.31" (8 mm) and 0.47" (12 mm)

For a detailed summary of the sizing
and color options, please refer to our delivery
program.

Mounting

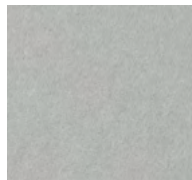
Visible on wooden substructure:
Bolts with painted head

Visible on metal substructure:
Blind rivets with painted head

Invisible on metal substructure:
Undercut anchors

Technical data

Detailed information can be found in
the DIM – "Design and Installation
Manual Largo – North America."



Crystal 8010



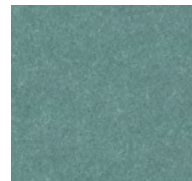
Granite 8060



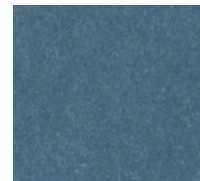
Granite 8061



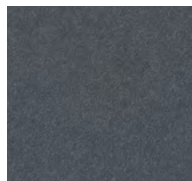
Granite 8062



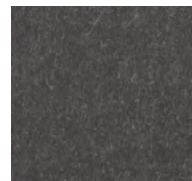
Jade 8053



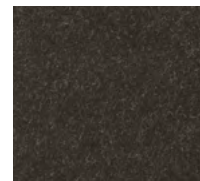
Azurite 8040



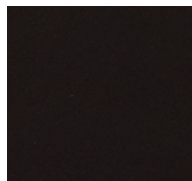
Anthracite 8021



Anthracite 8020



Anthracite 8023



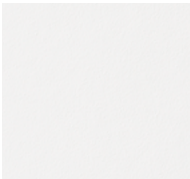
Anthracite 8024

Colors

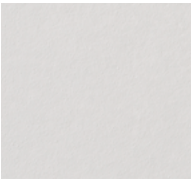
20 standard colors.

Special Coating Carat HR (optional)

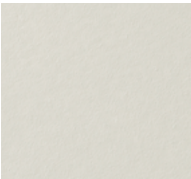
Carat HR (high-resistance) is a special transparent coating that has a high scratch resistance and offers protection against heavy soiling and graffiti. Carat HR is available in all Carat standard colors.



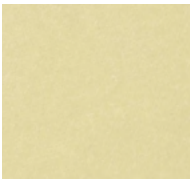
Ivory 8099



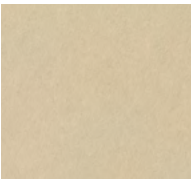
Ivory 8091



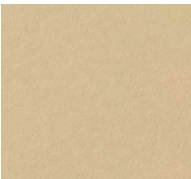
Ivory 8090



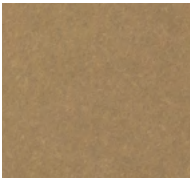
Limestone 8083



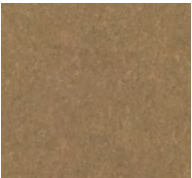
Sandstone 8000



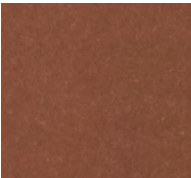
Sandstone 8002



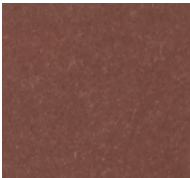
Amber 8075



Amber 8074



Coral 8034



Coral 8033





23

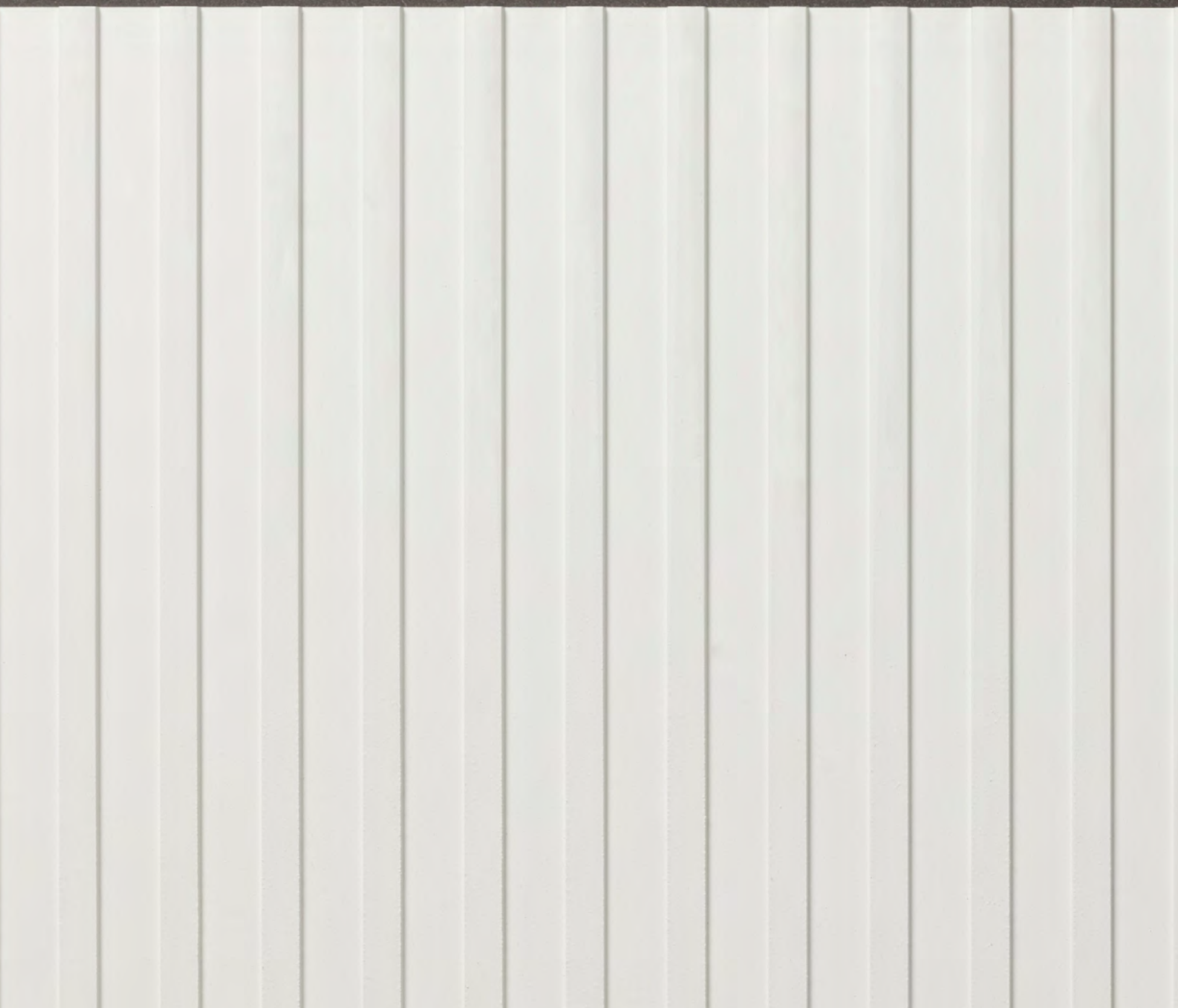
OMRRK National Museum, Budapest, Hungary. Architect: Narmer Építészeti Stúdió, Budapest, Hungary. Photographer: Meraner & Hauser OHG/SNC, Bolzano, Italy.



The OMRRK National Museum in Budapest was planned with four wings on the top two floors, running perpendicular to the building's main axis. This strategy reduces the apparent size of the building and allows for spaces with natural light from two directions. The museum's facades are clad in custom-colored, large-format Swisspearl panels.

GRAVIAL

Unique interplay between light and shadow. The straight, geometrically grooved surface offers countless possibilities for creating a special design accent.





GRAVIAL



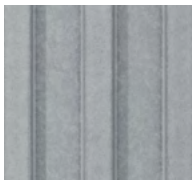
Gravial is a naturally dried fiber cement panel with a linear, milled surface structure and translucent coating. Depending on the time of day and viewing angle, it creates an impressive interplay of light and shadow. With the exception of one brown tone, the color line ranges from white to black in soft gray tones.



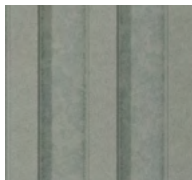
Ivory 3099



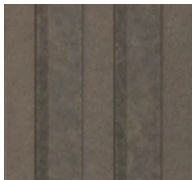
Ivory 3090



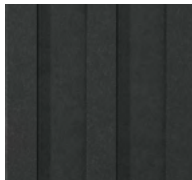
Crystal 125



Granite 624



Amber 723



Anthracite 3020

Technical data

Panels

The panel is colored through or gray based.

Coating: Translucent pigmented

Panel format

Swisspearl Largo:

Maximum usable format
120.08" x 49.21" (3050 x 1250 mm),
panel thickness 0.47" (12 mm)

For a detailed summary of the sizing and color options, please refer to our delivery program.

Colors

6 standard colors.

Mounting

Visible on wooden substructure:

Bolts with painted head

Visible on metal substructure:

Blind rivets with painted head

Invisible on metal substructure:

Undercut anchors

Technical data

Detailed information can be found in the "DIM-Design and Installation Manual Gravial."



VINTAGO

Naturally authentic, raw, vibrant,
and unique. The polished surface
underlines the purity of the fiber
cement panel.

VINTAGO



Vintago is a naturally dried fiber cement panel with a sanded, slightly rough surface. Through a polishing process using a rough abrasive grit, the interior character and originality of the fiber cement panel are subtly brought to the surface. The resulting robust texture breaks up homogeneous surfaces without being obtrusive.

Because color pigments are mixed into the base material of the fiber cement panel, the Vintago color family is an excellent choice for special cuts and unique designs for interiors and facades.

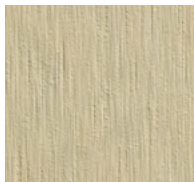
The Vintago color family offers a multifaceted range of light and dark grays and browns, as well as white, black, and accents of green, blue, and red. While most tones lean cool overall, the entire range highlights the fiber cement structure created by the polished finish.



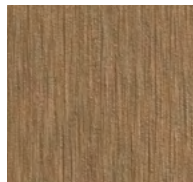
MFH, Zuzwil, Switzerland. Architect: Trunz + Wirth AG, Henau, Switzerland. Photographer: Meraner & Hauser OHG/SNC, Bolzano, Italy.



VI091



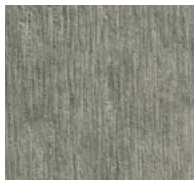
VI001



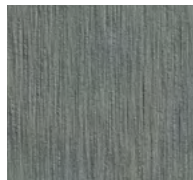
VI071



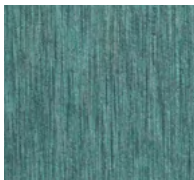
VI011



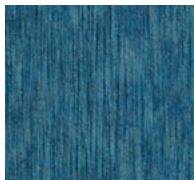
VI100



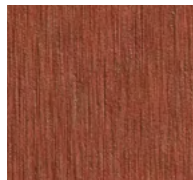
VI061



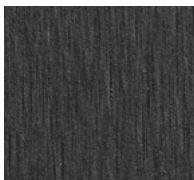
VI050



VI040



VI031



VI021

Technical data

Panels

The panel is colored through.

Coating: Transparent High-Resistant

Panel format

Swisspearl Largo:

Maximum usable format

120.08" x 49.21" (3050 x 1250 mm),

panel thickness 0.31" (8 mm)

For a detailed summary of the sizing and color options, please refer to our delivery program.

Colors

Wide selection with 10 standard colors.

Deviations in the color shades of the different panels are a natural part of the production properties underlining the vibrant, expressive character of the material.

Mounting

Visible on wooden substructure:

Bolts with painted head

Visible on metal substructure:

Blind rivets with painted head

Invisible on metal substructure:

Undercut anchors

Technical data

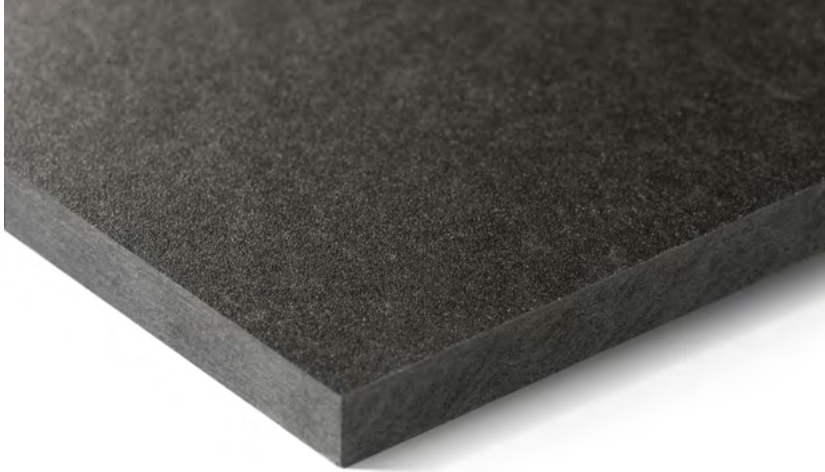
Detailed information can be found in the DIM – "Design and Installation Manual Largo – North America."

AVERA

Authentic, vibrant appearance.
The transparent coating allows
the original natural appearance
of the fiber cement to shine through.



AVERA

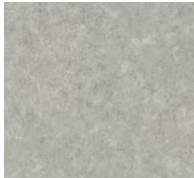


Avera is a naturally dried and colored-through fiber cement panel made with a dynamic production process that gives it an unmistakably natural, authentic texture. The Avera color range features versatile, easy-to-combine shades that bring out the distinctive cloudy appearance of the color line.

The highly resistant standard coating makes these panels particularly scratch-resistant and protects them from heavy soiling and graffiti. The transparent coating allows the natural appearance of the fiber cement to shine through, creating a lively surface with varied texture and dynamic color tones.



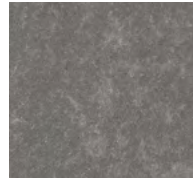
House on Haliburton Lake, Ontario, Canada. Architect: +VG, Toronto, Canada. Photographer: David Whittaker Photographer Inc., Toronto, Canada.



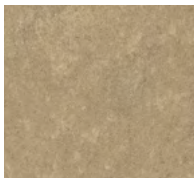
AV 010



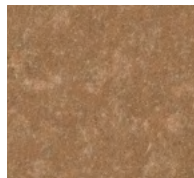
AV 100



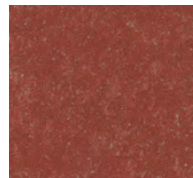
AV 060



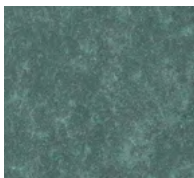
AV 000



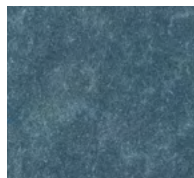
AV 070



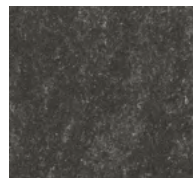
AV 030



AV 050



AV 040



AV 020

Technical data

Panels

The panel is colored through.

Coating: Transparent High-Resistant

Panel format

Swisspearl Largo:

Maximum usable format

120.08" x 49.21" (3050 x 1250 mm),

panel thickness 0.31" (8 mm)

For a detailed summary of the sizing and color options, please refer to our delivery program.

Colors

9 standard colors.

Deviations in the color shades of the different panels are a natural part of the production properties underlining the vibrant, expressive character of the material.

Mounting

Visible on wooden substructure:

Bolts with painted head

Visible on metal substructure:

Blind rivets with painted head

Invisible on metal substructure:

Undercut anchors

Technical data

Detailed information can be found in the DIM – "Design and Installation Manual Largo – North America."

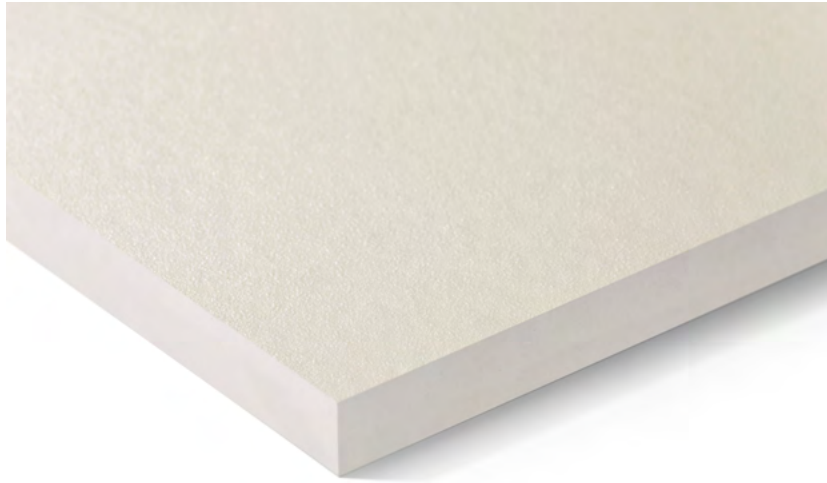


REFLEX

Shiny look with metallic effects.
The reflective surface coating
gives the panel an expressive and
shiny appearance.

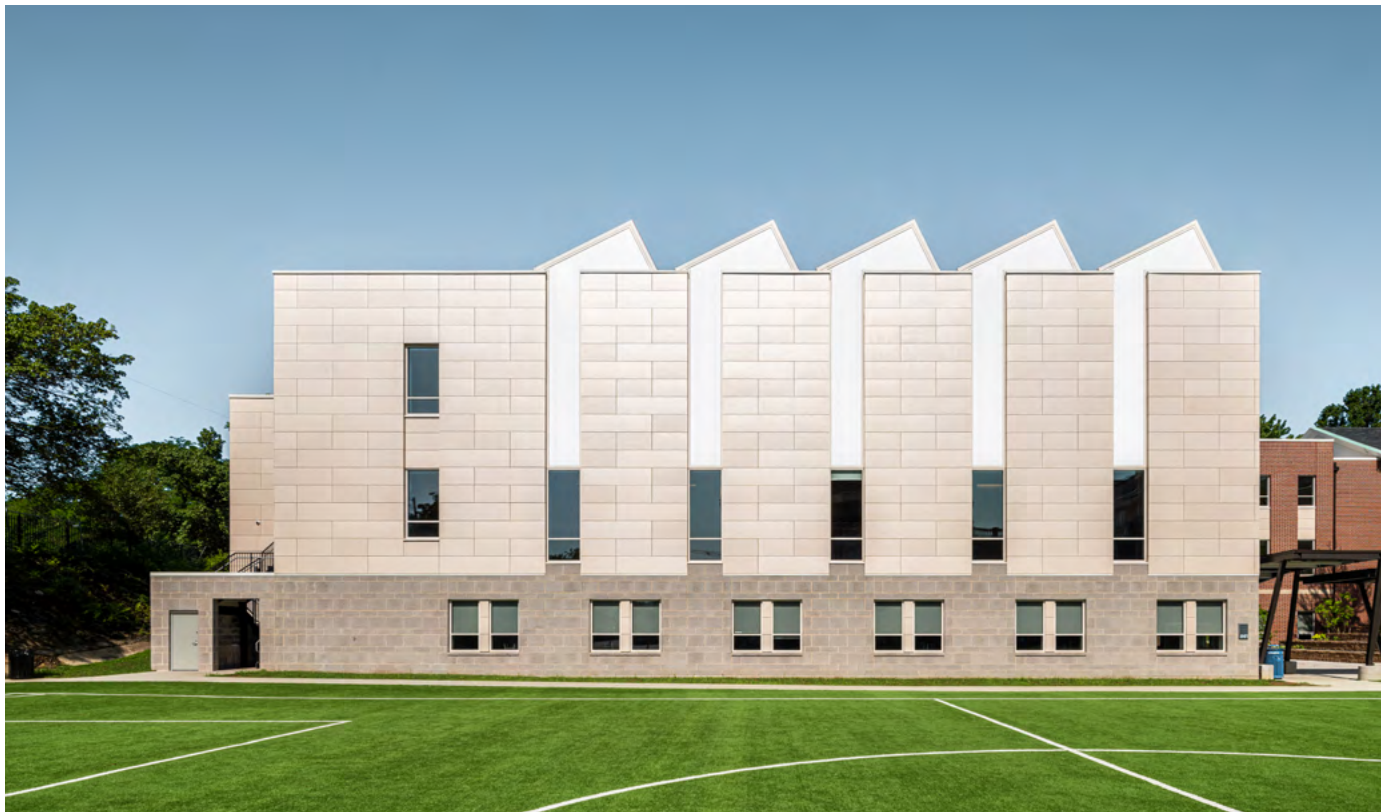


REFLEX

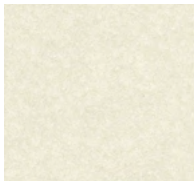


Reflex is a colored-through, naturally dried fiber cement panel with a reflective surface coating that catches the light. Depending on the viewing angle, the surface takes on a restrained, shimmering appearance.

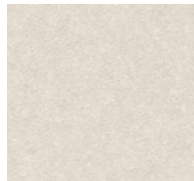
The Reflex color range includes seven shades of black and gray, each with subtle green undertones, as well as two warm white shades and three bronze red-brown shades. With its nuanced reflective pigments, Reflex has a distinctive, refined character.



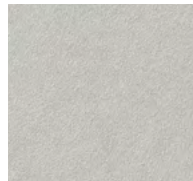
DC International School, Washington, USA. Architect: Perkins Eastman DC, Washington, USA. Photographer: Brycen Fischer, Baltimore, USA.



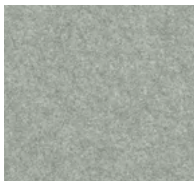
Ivory 4092



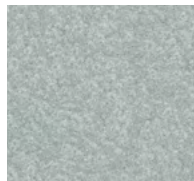
Ivory 4091



Crystal 4111



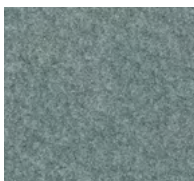
Granite 4161



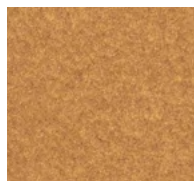
Granite 4162



Crystal 4112



Jade 4051



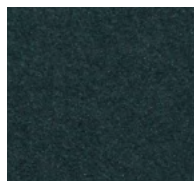
Amber 4071



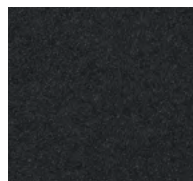
Amber 4072



Coral 4031



Anthracite 4022



Anthracite 4021

Technical data

Panels

The panel is colored through.

Coating: Iridescent, opaque High-Resistant

Panel format

Swisspearl Largo:

Maximum usable format

120.08" x 49.21" (3050 x 1250 mm),

panel thickness 0.31" (8 mm) and 0.47" (12 mm)

For a detailed summary of the sizing and color options, please refer to our delivery program.

Colors

12 standard colors.

Mounting

Visible on wooden substructure:

Bolts with painted head

Visible on metal substructure:

Blind rivets with painted head

Invisible on metal substructure:

Undercut anchors

Technical data

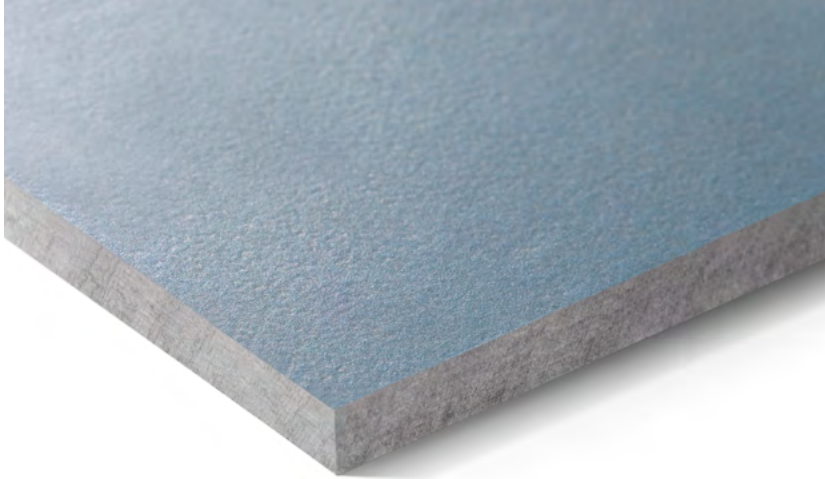
Detailed information can be found in the DIM – "Design and Installation Manual Largo – North America."



NOBILIS

Natural elegance through authenticity.
The translucent, slightly pigmented
surface highlights the fiber cement texture
in all its natural beauty and elegance.

NOBILIS

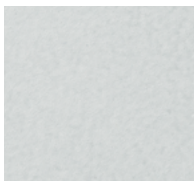


Nobilis is a gray panel with a translucent, lightly pigmented surface that highlights the fiber cement texture in all its natural beauty and elegance. The color family includes 13 shades spanning brown, blue, green, and a wide range of grays from warm to cool. The sophisticated palette creates an effortless aesthetic and a sense of elegant lightness.

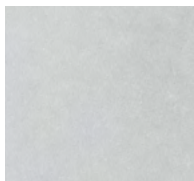
As a naturally dried and lightly pigmented fiber cement panel, Nobilis is restrained and, for that very reason, becomes an aesthetic focal point. Whether through deliberate combinations of soft gray tones or a unified, expressive look, Nobilis brings simple elegance to facades and interiors.



House XL, Pot na Črnilu, Slovenia. Architect: SONO Arhitekti, Lokavec, Slovenia. Photographer: Meraner & Hauser OHG / SNC, Bolzano, Italy.



Crystal 124



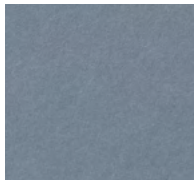
Crystal 122



Crystal 123



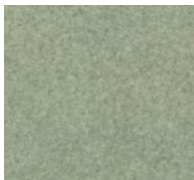
Crystal 125



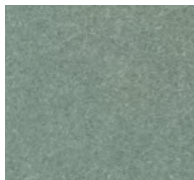
Azurite 421



Azurite 422



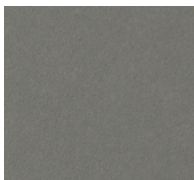
Jade 521



Jade 522



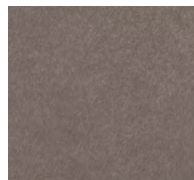
Granite 624



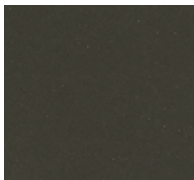
Granite 622



Amber 721



Amber 723



Anthracite 221

Technical data

Panels

The panel is gray based.

Coating: Translucent lightly pigmented

Panel format

Swisspearl Largo:

Maximum usable format

120.08" x 49.21" (3050 x 1250 mm),

panel thickness 0.31" (8 mm); 0.47" (12 mm) panels

only available in 98.82" x 49.21" (2510 x 1250 mm)

For a detailed summary of the sizing and color options, please refer to our delivery program.

Colors

13 standard colors.

Special Coating Nobilis HR (optional)

Nobilis HR is a special transparent coating that has a high scratch resistance and offers protection against heavy soiling and graffiti. Nobilis HR is available in all Nobilis standard colors.

Mounting

Visible on wooden substructure:

Bolts with painted head

Visible on metal substructure:

Blind rivets with painted head

Invisible on metal substructure:

Undercut anchors

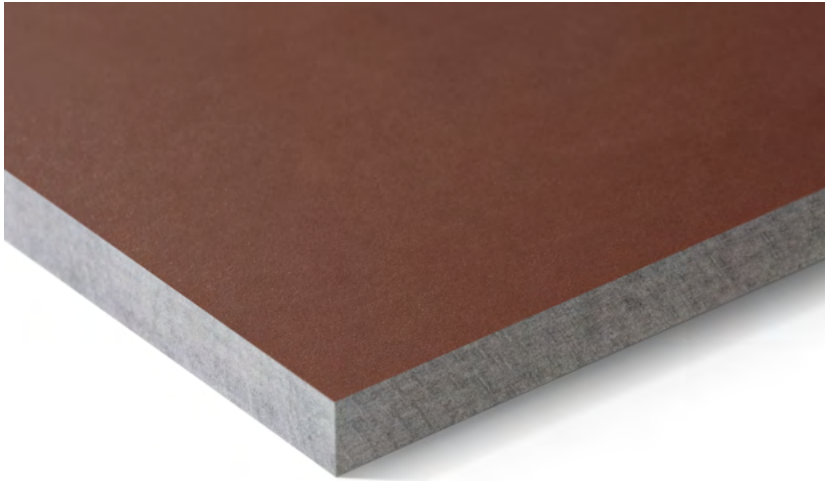
Technical data

Detailed information can be found in the DIM – "Design and Installation Manual Largo – North America."

TERRA

Earthy, warm atmosphere.
The finely coordinated colors are
reminiscent of earthy tones
and give the building shell an
earthy, natural look.

TERRA

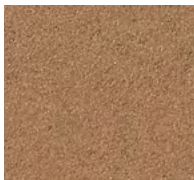


Terra is a naturally dried gray fiber cement panel with a translucent, strongly pigmented surface. The name Terra reflects the character of the color line and its warm, earthy tones.

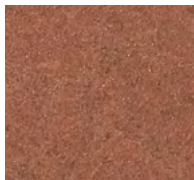
Terra transitions from light to very dark brown across six shades, while preserving the harmony of the color family. The finely balanced colors evoke natural earth tones and give the building envelope a distinctly natural look. Terra allows buildings to blend into their natural surroundings, adding warmth and comfort without losing strength or expressiveness.



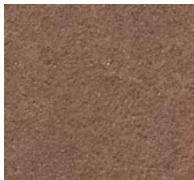
Inspiration atelier 522.



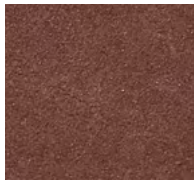
Amber 751



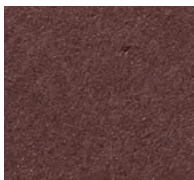
Amber 752



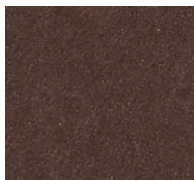
Amber 753



Amber 754



Amber 755



Amber 756

Technical data

Panels

The panel is gray based.

Coating: Translucent strongly pigmented

Panel format

Swisspearl Largo:

Maximum usable format

120.08" x 49.21" (3050 x 1250 mm),

panel thickness 0.31" (8 mm); 0.47" (12 mm) panels

only available in 98.82" x 49.21" (2510 x 1250 mm)

For a detailed summary of the sizing and color options, please refer to our delivery program.

Colors

6 standard colors.

Mounting

Visible on wooden substructure:

Bolts with painted head

Visible on metal substructure:

Blind rivets with painted head

Invisible on metal substructure:

Undercut anchors

Technical data

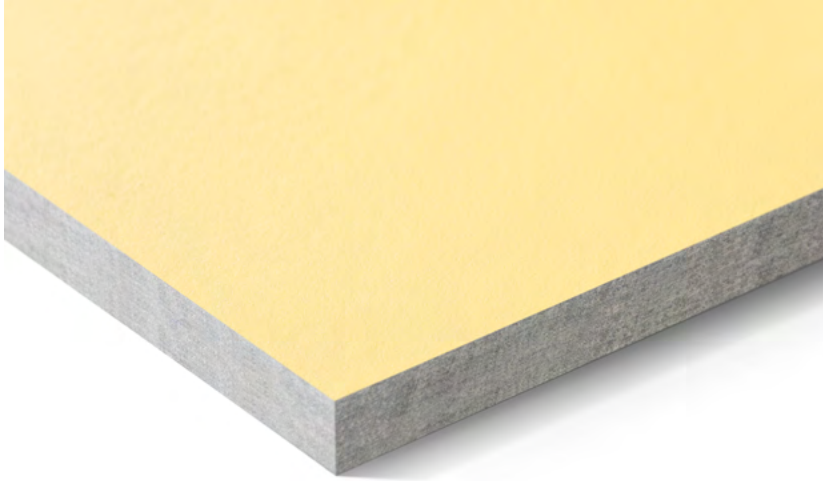
Detailed information can be found in the DIM – "Design and Installation Manual Largo – North America."



PLANEA

Fresh, colorful creativity. The matte, smooth surface emphasizes the clear, light, and intense colors and thus creates a particularly expressive effect.

PLANE A

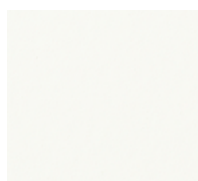


Planea is a naturally dried gray fiber cement panel with an opaque, strong surface coating. The color family features strong, vibrant, and particularly color-intensive shades, including two sunny yellows, two refreshing greens, and four reds ranging from pastel to dark. Fine gradations of white and light gray, along with a strong shade of black, expand the palette and allow for bold contrasts or subtle accentuation.

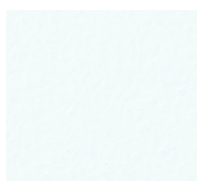
The smooth, matte surface highlights the clear, intense colors, making them particularly expressive. Planea can be used to create a color-intensive building envelope that brings a bright contrast to its surroundings.



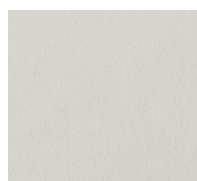
Bergi Music and Art Primary School, Garkalnes Novads, Latvia. Architect: Ozola & Bula, Riga, Latvia. Photographer: Meraner & Hauser OHG/SNC, Bolzano, Italy.



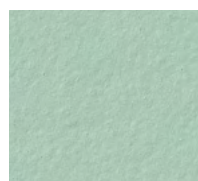
Snowflake 930



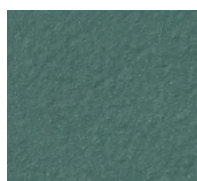
Igloo 932



Skylight 131



Cactus 531



Jungle 532



Midnight 231



Dragon 332



Crimson 333



Ruby 334



Sunrise 831



Sunset 832

Technical data

Panels

The panel is gray based.
Coating: Opaque

Panel format

Swisspearl Largo:

Maximum usable format
120.08" x 49.21" (3050 x 1250 mm),
panel thickness 0.31" (8 mm) and 0.47" (12 mm)

For a detailed summary of the sizing and color options, please refer to our delivery program.

Colors

11 standard colors.
Special colors available upon request.

Mounting

Visible on wooden substructure:

Bolts with painted head

Visible on metal substructure:

Blind rivets with painted head

Invisible on metal substructure:

Undercut anchors

Technical data

Detailed information can be found in the DIM – "Design and Installation Manual Largo – North America."

ZENOR

Simple elegance.

The selected range offers
cost-effective, yet high-
quality implementation.

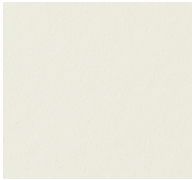


ZENOR

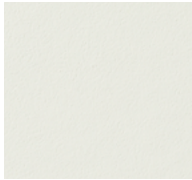


Zenor is a large-format fiber cement panel with an opaque coating. The selected color range offers a cost-effective, high-quality solution from production through installation. It provides all-around protection for building envelopes with simple elegance.





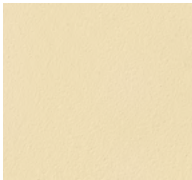
11115



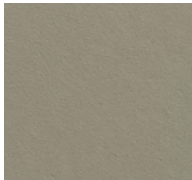
11006



15015



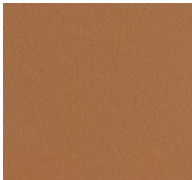
23057



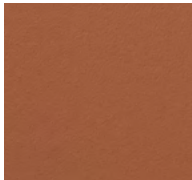
65061



67007



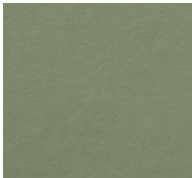
35154



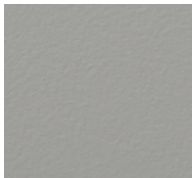
33106



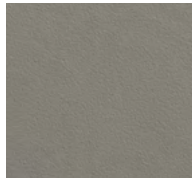
35005



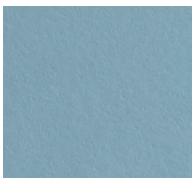
51101



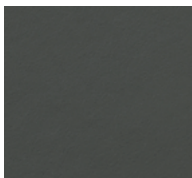
65126



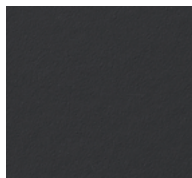
63077



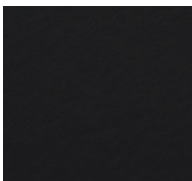
41055



69055



67014



67159

Technical data

Panels

The panel is colored through in a similar shade to the surface.

Coating: Opaque

Panel format

Swisspearl Largo:

Maximum usable format

120.08" x 49.21" (3050 x 1250 mm),
panel thickness 0.31" (8 mm)

For a detailed summary of the sizing and color options, please refer to our delivery program.

Colors

16 standard colors.

Special Coating Zenor HR (optional)

Zenor HR is a special transparent coating that has a high scratch resistance and offers protection against heavy soiling and graffiti. Zenor HR is available in all Zenor standard colors.

Mounting

Visible on wooden substructure:

Bolts with painted head

Visible on metal substructure:

Blind rivets with painted head

Invisible on metal substructure:

Undercut anchors

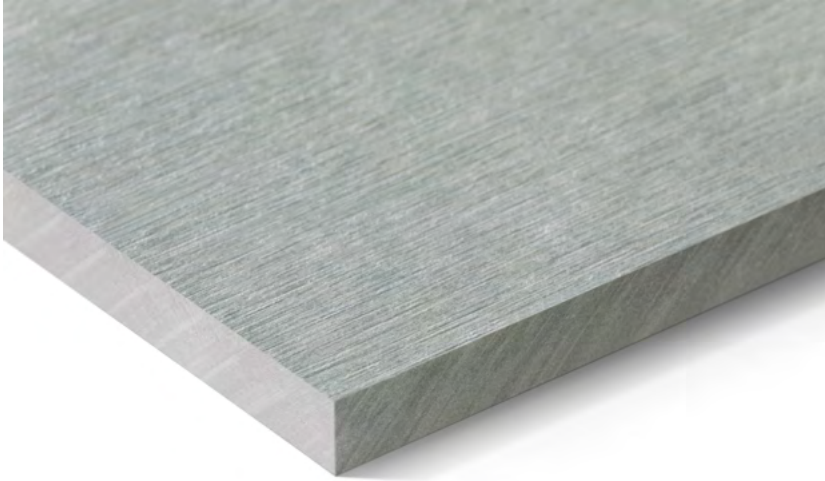
Technical data

Detailed information can be found in the DIM – "Design and Installation Manual Largo – North America."

PATINA ORIGINAL NXT

Natural, vibrant structures are created
by a polished surface that develops
a unique patina over time.

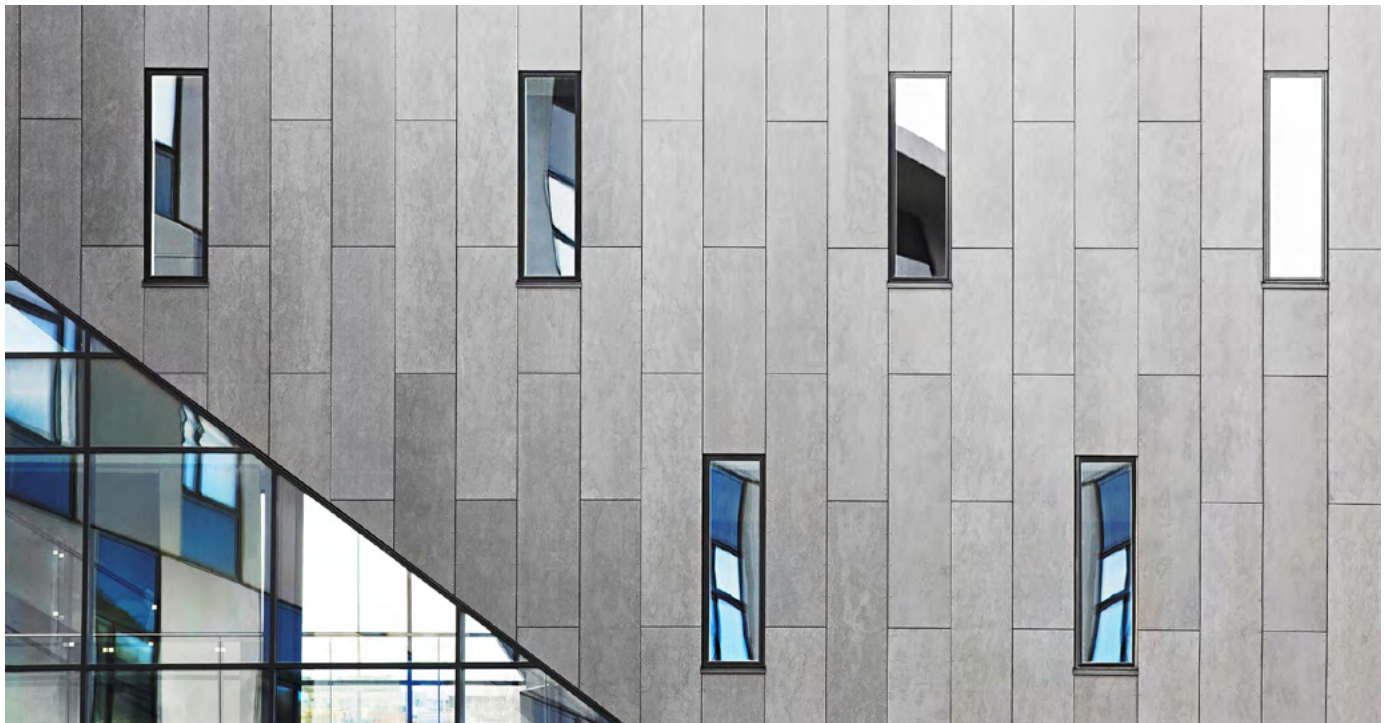
PATINA ORIGINAL NXT



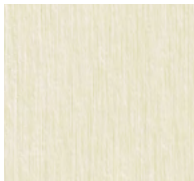
Patina Original NXT is a colored fiber cement panel with a textured surface that brings out the character of the material. The texture emphasizes the fibers and the distinctive qualities of the raw materials. As the seasons change, a subtle patina develops that tells the story of the building and brings its facade to life.

As the panel develops a patina over time, it gives the building a unique aesthetic, with small, subtle variations across the surface.

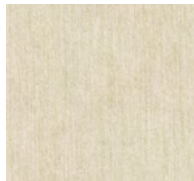
Due to the slight sanding, it is important to ensure that Patina Original NXT panels are installed in the correct direction.



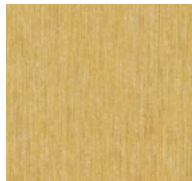
Visionshuset, Ålborg, Denmark. Architect: KPF arkitekter, Ålborg, Denmark. Builder: C.W. Obel Ejendomme A/S, Ålborg, Denmark.
(1st generation Patina)



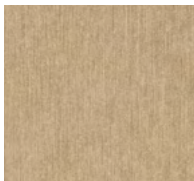
P 222



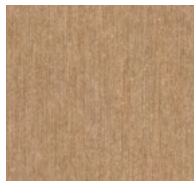
P 545



P 565



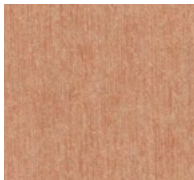
P 313



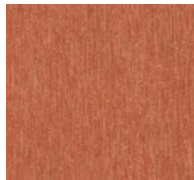
P 333



P 626



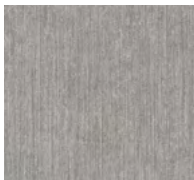
P 323



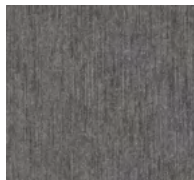
P 343



P 020



P 045



P 070

Technical data

Panels

The panel is colored through and very finely ground on the visible side. This preserves the structure of the fiber cement and creates a deliberately vibrant character. The panel surfaces are hydrophobized on all sides.

Panel format

Swisspearl Largo:

Maximum usable format
120.08" x 49.21" (3050 x 1250 mm),
panel thickness 0.31" (8 mm)

For a detailed summary of the sizing and color options, please refer to our delivery program.

Colors

11 standard colors.

Deviations in the color shades of the different panels are a natural part of the production properties, underlining the vibrant, expressive character of the material.

Mounting

Visible on wooden substructure:

Bolts with painted head

Visible on metal substructure (aluminum or steel):

Blind rivets with painted head

Technical data

Detailed information can be found in the DIM –
"Design and Installation Manual – North America."

PATINA INLINE NXT

Light and shadow in the rhythm
of time. Linear milled indentations
create a dynamic appearance.



PATINA INLINE NXT



Patina Inline NXT is a colored-through fiber cement panel with a linear, milled surface structure. The indentations create an atmospheric play of shadows that changes with the time of day and viewing angle. Over time, a fine patina forms on the surface.

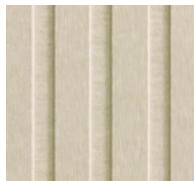
The restrained color range, from white to beige to dark gray, pairs beautifully with the milled surface.



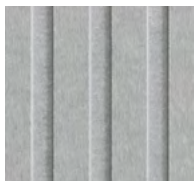
Långsjöskolan Huddinge, Segeltorp, Sweden. Architect: Tyréns, Sweden and Arkitema Architects, Denmark. Photographer: Barabild Sverige AB, Stockholm, Sweden. (1st generation Patina)



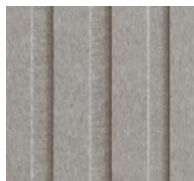
P 222



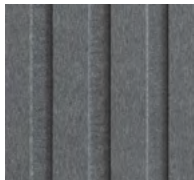
P 545



P 020



P 045



P 070

Technical data

Panels

The panel is colored through with linear, milled structural grooves. This gives the building a unique 3D effect and a dynamic appearance. The panel surfaces are hydrophobized on all sides.

Panel format

Swisspearl Largo:

Maximum usable format

120.08" x 49.21" (3050 x 1250 mm),

panel thickness 0.37"/0.31" (9.5/8 mm)

For a detailed summary of the sizing and color options, please refer to our delivery program.

Colors

5 standard colors.

Deviations in the color shades of the different panels are a natural part of the production properties, underlining the vibrant, expressive character of the material.

Mounting

Visible on wooden substructure:

Bolts with painted head

Visible on metal substructure (aluminum or steel):

Blind rivets with painted head

Technical data

Detailed information can be found in the DIM – "Design and Installation Manual – North America."

PATINA ROUGH NXT

Unique, rough, versatile.
The rough surface gives it
a distinctive character.

PATINA ROUGH NXT

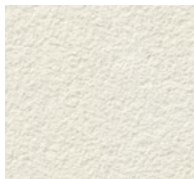


Patina Rough NXT is a colored-through fiber cement panel with a rough, sandblasted surface that creates a distinctive appearance. Subtle variations in color and texture make each panel unique. Like all ranges of the Patina NXT series, Patina Rough NXT forms a fine coating over time, giving the facade an individual character.

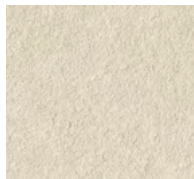
The exquisite shades enhance the expressiveness of the rough surface and create a harmonious combination with the other Patina NXT products.



Vigtil Terrasse, Trondheim, Norway. Architect: Per Knudsen Arkitekter, Trondheim, Norway.
Photographer: Kristoffer Wittrup, Atelier Ilsvika, Trondheim, Norway.
(1st generation Patina)



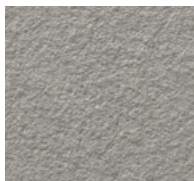
P 222



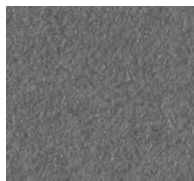
P 545



P 020



P 045



P 070

Technical data

Panels

The panel is colored through and has a velvety, textured surface on the visible side. The panel surfaces are hydrophobized on all sides. Their appearance is reminiscent of natural materials, such as naturally aged sandstone.

Panel format

Swisspearl Largo:

Maximum usable format

120.08" x 49.21" (3050 x 1250 mm),
panel thickness 0.31" (8 mm)

For a detailed summary of the sizing and color options, please refer to our delivery program.

Colors

5 standard colors.

Deviations in the color shades of the different panels are a natural part of the production properties, underlining the vibrant, expressive character of the material.

Mounting

Visible on wooden substructure:

Bolts with painted head

Visible on metal substructure (aluminum or steel):

Blind rivets with painted head

Technical data

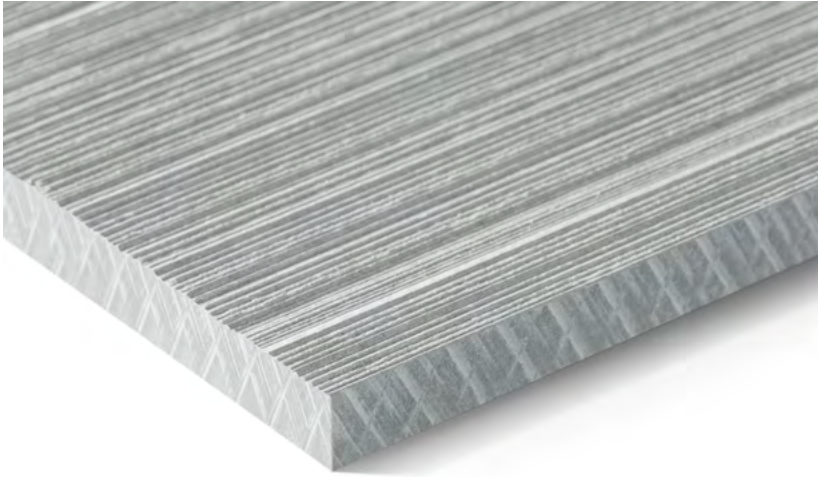
Detailed information can be found in the DIM - "Design and Installation Manual - North America."

PATINA STRUCTURE NXT

Structure created between shadow and light.
Transforms fiber cement into a visual and
tactile experience.



PATINA STRUCTURE NXT



The surface of Patina Structure NXT reveals a refined, natural rhythm created by subtle linear grooves. As light grazes the material, delicate shadows move across the texture, adding depth to each panel. The structured finish enhances every color variation, creating a dynamic interplay of light and shadow throughout the day and from different viewing angles. The material conveys both strength and sophistication, combining a natural look with modern design sensibilities.

Patina Structure NXT transforms fiber cement into a visual and tactile experience, offering architects a wide range of aesthetic possibilities within the Patina NXT family.

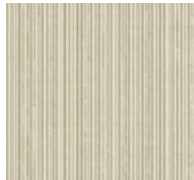


Inspired by Meraner & Hauser OHG/SNC, Bolzano, Italy.

Standard colors



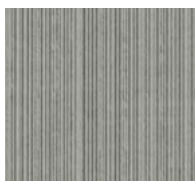
P 222



P 545



P 020

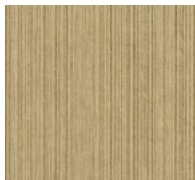


P 045



P 070

Rare colors



P 313



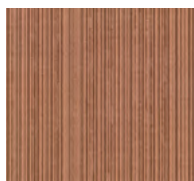
P 333



P 626



P 323



P 343



P 565

Technical data

Panels

The panel is colored through and milled with a natural rhythm created by subtle linear grooves. The fine and versatile texture enhances the architectural depth of each panel. The surfaces on all sides are hydrophobized.

Panel format

Swisspearl Largo:

Maximum usable format
120.08" x 49.21" (3050 x 1250 mm),
panel thickness 0.31" (8 mm)

For a detailed summary of the sizing and color options, please refer to our delivery program.

Colors

5 standard colors and 6 rare colors. Deviations in the color shades of the different panels are a natural part of the production properties, underlining the vibrant character of the material.

Mounting

Visible on wooden substructure:


Screws with painted heads

Visible on metal substructure (aluminum or steel):

Blind rivets with painted head

Technical data

Detailed information can be found in the DIM – "Design and Installation Manual – North America."



The design possibilities created by our versatile range of surfaces and colors can be expanded with special finishes and surface treatments. Additional options such as perforations, engraving, or other custom designs give every building a distinctive, high-end visual effect.



DESIGNING POSSIBILITIES



Freeform

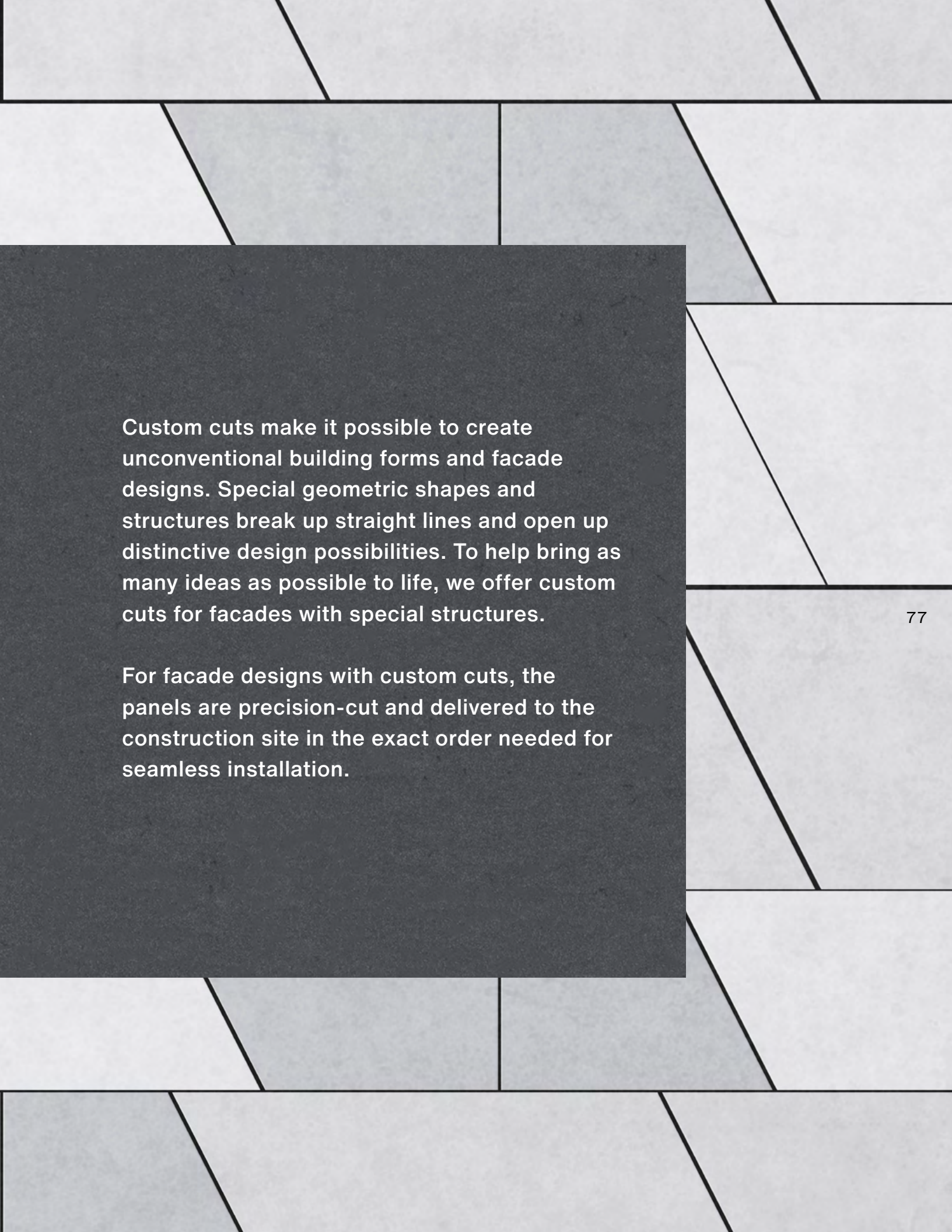
More Than Right Angles: Free shapes add a new dimension to the scope of design.

Thanks to the high formability of freshly mixed fiber cement, it can be shaped into free forms that open up new possibilities for facade design. Whether organic forms, curved lines, inclined surfaces, or free-flowing facade cladding with a textile look, complex shapes are possible far beyond the conventional. Our free forms also offer all the advantages of the material.



Custom Cut

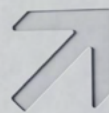
Customized Variety of Shapes: Individually customized
elements for free facade design.



Custom cuts make it possible to create unconventional building forms and facade designs. Special geometric shapes and structures break up straight lines and open up distinctive design possibilities. To help bring as many ideas as possible to life, we offer custom cuts for facades with special structures.

For facade designs with custom cuts, the panels are precision-cut and delivered to the construction site in the exact order needed for seamless installation.

HALL 1



LOU

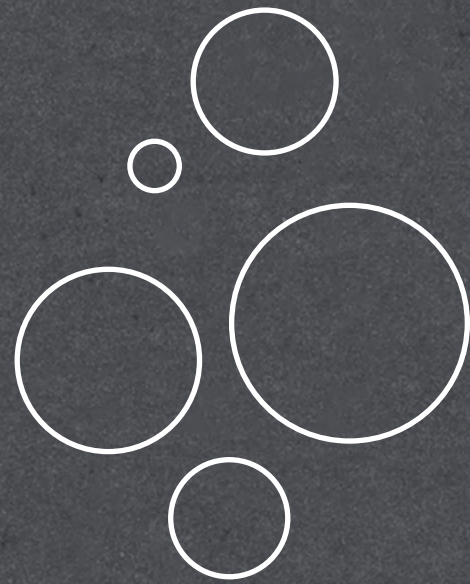
Engraving

Defining Impressions: With engraved elements, shapes and patterns can be integrated directly into the facade – from fine details to large-scale motifs.

HALL 2


Geometric shapes, individual patterns, company logos, or image motifs can be engraved on fiber cement panels. Engravings can appear within a single panel, transition from one panel to another, or extend across multiple panels to create a larger pattern. Each proposed design must meet technical requirements for structural feasibility. As a guideline, engraving depth is 0.06" (1.5 mm) on 0.31" (8 mm) panels, or up to 0.16" (4 mm) on 0.47" (12 mm) panels.

Engraved panels are available in Carat.
Other color lines are available upon request.



Perforation

Aesthetic One-Offs: Facades with perforated panels are impressive and can be used in a variety of ways.



Perforations add a striking visual effect to facades and interior walls. They bring natural light into the building, connect interior and exterior spaces, and create a bold design statement. Holes, slits, and other perforations can be used to achieve unique results. Perforated panels can also serve functional purposes, such as sliding shutters, wind shelters, partitions, sound absorption, or special lighting concepts. They can also be purely decorative, creating an overall look defined by many small openings. As a guideline, the perforated area may be up to 18%.

Perforated panels are available in Carat, Nobilis, Terra, and Planea. Other color lines are available upon request.

Service

Warranty

Our products are manufactured to the highest quality standards. Production is subject to continuous quality control, including testing in third-party facilities and in our in-house laboratories. If delivered products do not meet the specified performance requirements, the warranty applies and covers facade panels and accessories. The warranty assumes that the instructions in the latest edition of the DIM – Design and Installation Manual have been followed.

Material properties

The printed color shades shown may differ from the original color shades. Sample panels should be used for accurate identification and color coordination of neighboring building components. Fiber cement panels owe their unique character, in part, to natural ingredients. Slight variations between different production batches therefore cannot be ruled out.

Differences in texture and color between individual panels are a natural part of the manufacturing process and reinforce the vibrant character of the facade. Such color differences are not covered by the warranty.



We are here for you

With comprehensive consulting and service offerings, we support building owners, architects, and planners in developing qualified solutions together. We provide expert advice, detailed documentation, technical manuals, and the Swisspearl Architecture Magazine, a renowned publication.

Our high-quality fiber cement products combine exceptional durability with lasting quality to create solutions for aesthetic building envelopes and refined living spaces. Our dedicated and skilled employees are here to support you, your ideas, and your questions. We look forward to bringing projects to life together.



Inspiration from the Swisspearl Architecture Magazine

Every year, the Swisspearl Architecture Magazine features outstanding projects from around the globe, showcasing how Swisspearl products are used in contemporary architecture. These references demonstrate how facade design shapes architectural expression, durability, and sustainability in real-world applications.

As expectations for sustainable construction continue to rise, architects benefit more than ever from shared built examples and real design lessons. This is especially relevant to the building envelope, where energy efficiency and long-term performance are increasingly shaped by material and system choices. Swisspearl rear-ventilated facades meet these demands with an environmentally friendly solution that supports lasting durability and design intent.

Get inspired – [swisspearl.com](https://www.swisspearl.com)







Swisspearl Group AG

Eternitstrasse 3
8867 Niederurnen
Switzerland
info@swisspearl.com

[swisspearl.com](https://www.swisspearl.com)