

STONEO

ENGINEERED STONE



ARCHITECTURAL SOLUTIONS





ULMA ARCHITECTURAL SOLUTIONS

FACADE SYSTEMS | CUSTOMIZED ARCHITECTURAL PRECAST | STREET FURNITURE



THE STRENGTH OF A GREAT TEAM



WORK WITH EXPERTS. MANUFACTURERS SINCE 1960.

Our years of experience have allowed us to develop innovative and sustainable products and solutions. In addition to Facade Systems, we offer Architectural Precast and Street Furniture.

COMMITTED TO SUSTAINABILITY.

We are aligned with the environment by using natural, recyclable materials and local collaborating companies, to reduce CO2 emissions. We are a company that takes care of the details and seeks, every day to improve our impact on the world.

THE ESSENCE OF STONE

Stoneo is a material with all the sensations of stone. With its character, its textures and colors; its solidity, beauty, strength and exclusivity. It is the very *essence* of stone.

This is a Stone derivative made up almost entirely of natural (aggregates) and recycled components. All of them controlled through rigorous quality protocols.

Stoneo is a **non-combustible** (A2-s1, d0) and **non-porous** material, with almost no water absorption (0.1%), which guarantees watertight integrity and excellent performance against atmospheric changes such as; thawing, rain or wind.

All these characteristics make **Stoneo** a **sustainable** and high quality material, not only for its **strength and durability**, but also for its beauty.

We present our range of textures and solutions, so you can create unique projects:

PURE: ORIGIN. Natural appearance of stone carved over the course of time. To be integrated in projects where a noble material with unbeatable properties is required.

LOOK: DYNAMISM. Endless possibilities to create dynamic effects and shades. A thousand colours in one.

ART: INSPIRATION. Creative freedom to come up with unique, creative facades, where any texture, colour or design envisaged by the architect is possible. The ART range is born in the architect's mind and created in our ideas laboratory. Teamwork that ensures infinite customisation options.

FEEL: HARMONY. Smooth surface that adds a continuous, uniform finish; an inspiring breath of air, from the ground to the sky.

FORMS: THE ESSENCE. Customised solutions that adapt to the original or defined form of the building. They fit together like the piece of a puzzle.

SUSTAINABILITY





ZERRENNER FOUNDATION

BRAZIL
Gustavo Penna

STONEO PURE

*"This building is full of meaning, based on the idea that different activities can be integrated and co-exist harmoniously; that's why I designed the curved portico as a single sweep, one which is both inviting and welcoming. In terms of **Stoneo**, I value the natural finish it brings to the project."*

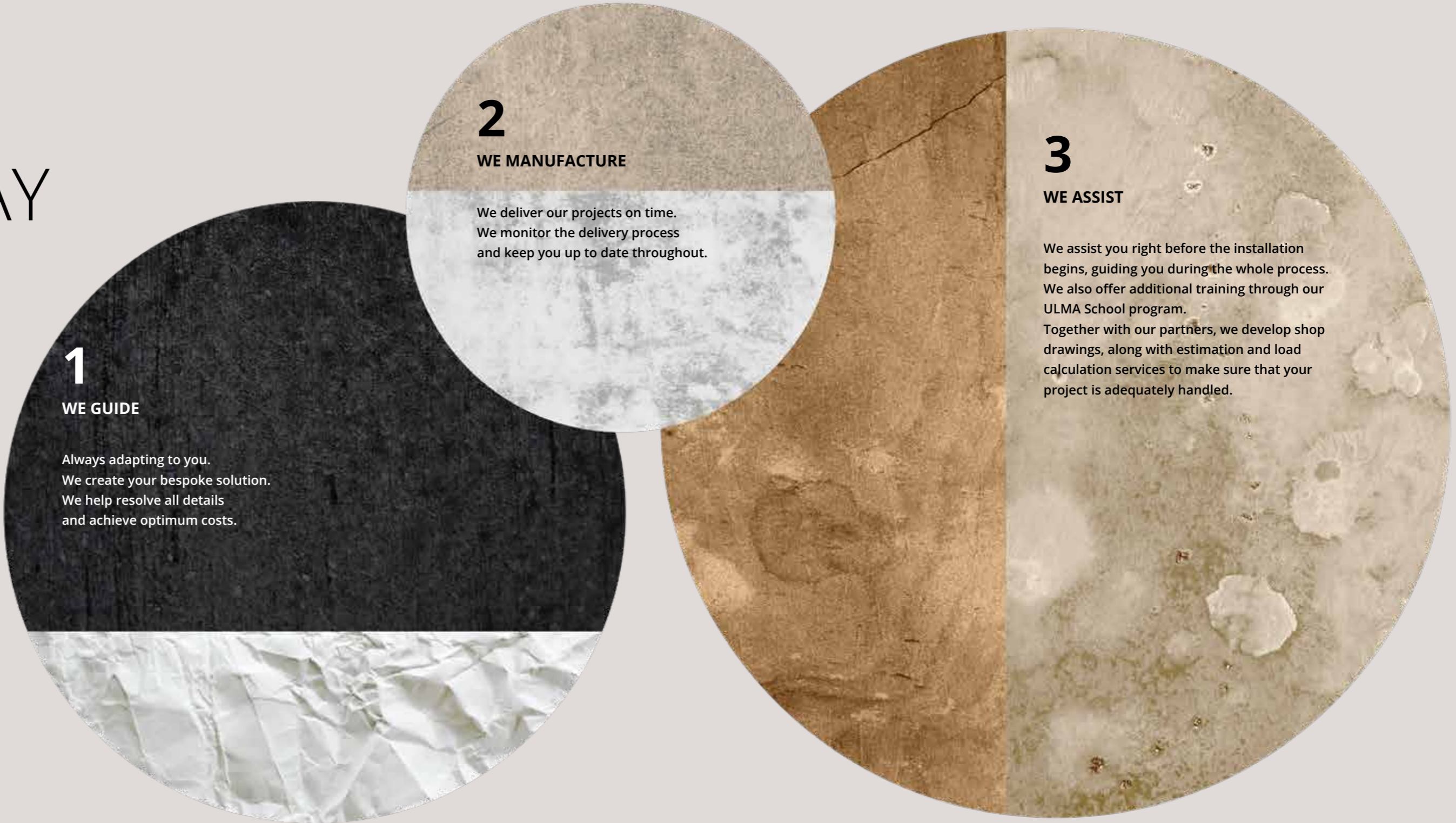
Range: PURE
Colour: M05
Texture: Slate



WITH YOU ALL THE WAY

COMPREHENSIVE SERVICE

From analysing your needs through completing the work, we are on hand to advise you throughout the process, providing the best overall solution for your facade cladding system.





FAZER HEADQUARTERS

FINLAND

Mikko Summannen

STONEO ART

*"The idea behind the texture comes from our recollection of wafers and this producer's famous chocolate bars, although it is still an abstract pattern that does not reproduce any specific shape; We had a very tight schedule, we were practically designing and developing our ideas as the building was being built. That's why we appreciated the fact that **ULMA**'s team included an architect who understood our requests to produce this unique texture in record time. The end result is highly precise and fully in line with our expectations, as the pattern was a perfect fit."*

Range: ART
Colour: M05
Texture: Custom 3D

ALCOLEA CENTRE
FOR MENTALLY
DISABLED PERSONS

SPAIN

José Carlos Rico Córdoba,
Jorge Roa Fernández,
Antonio J. Robles Ramírez

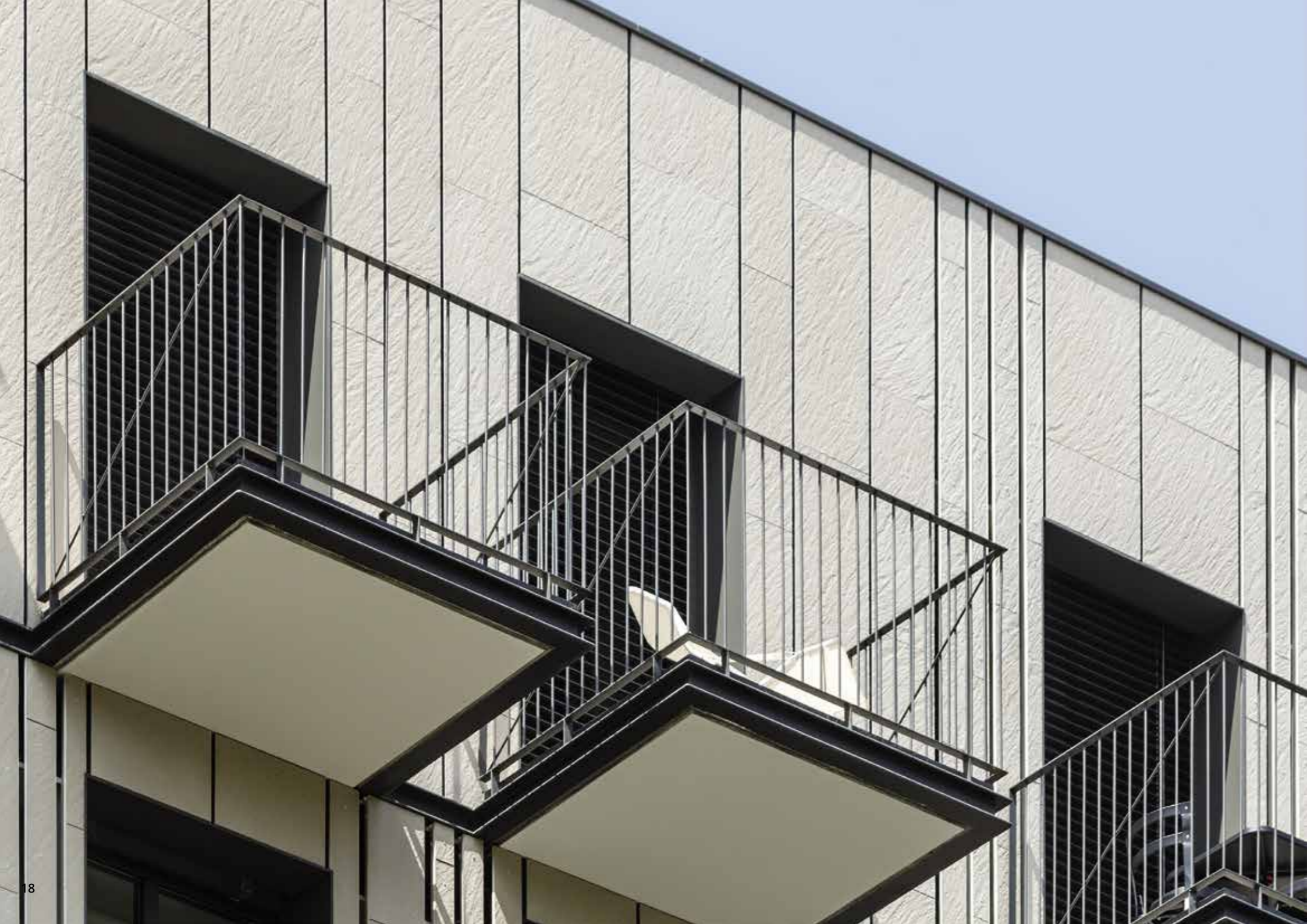
STONEO LOOK

"The original idea for the project came from our reflection on the building's future inhabitants, its typology and its relationship with the environment. Understanding the building as a permanent home rather than as a care centre has been a key aspect in its development.

*A delicate issue of particular importance was the choice of materials and products used for the envelope and its coatings. The strict durability and low-maintenance conditions, along with higher resistance requirements than usual, meant the product range was somewhat limited. Its technical possibilities, accuracy of assembly, quality of finish and, above all, thermal stability in an area so close to the mountains and with such widely varying temperatures, have all been key factors in opting for **Stoneo**."*

Range: LOOK
Colour: M05
Texture: Water





VILADECANS PROPERTIES

SPAIN
Taller Sau

STONEO PURE

"The challenge was to develop a facade with vertical slats arranged between the floor structures and adjusted to the distance between the windows. The vertical system with 20 mm joints, combined with the vertical slat system, emphasises the verticality of the building and achieves the desired aesthetic."

Range: PURE
Colour: Special Development
Texture: Slate

SAN SEBASTIÁN
AQUARIUM

SPAIN
Gipuzkoa
Oceanographic
Foundation

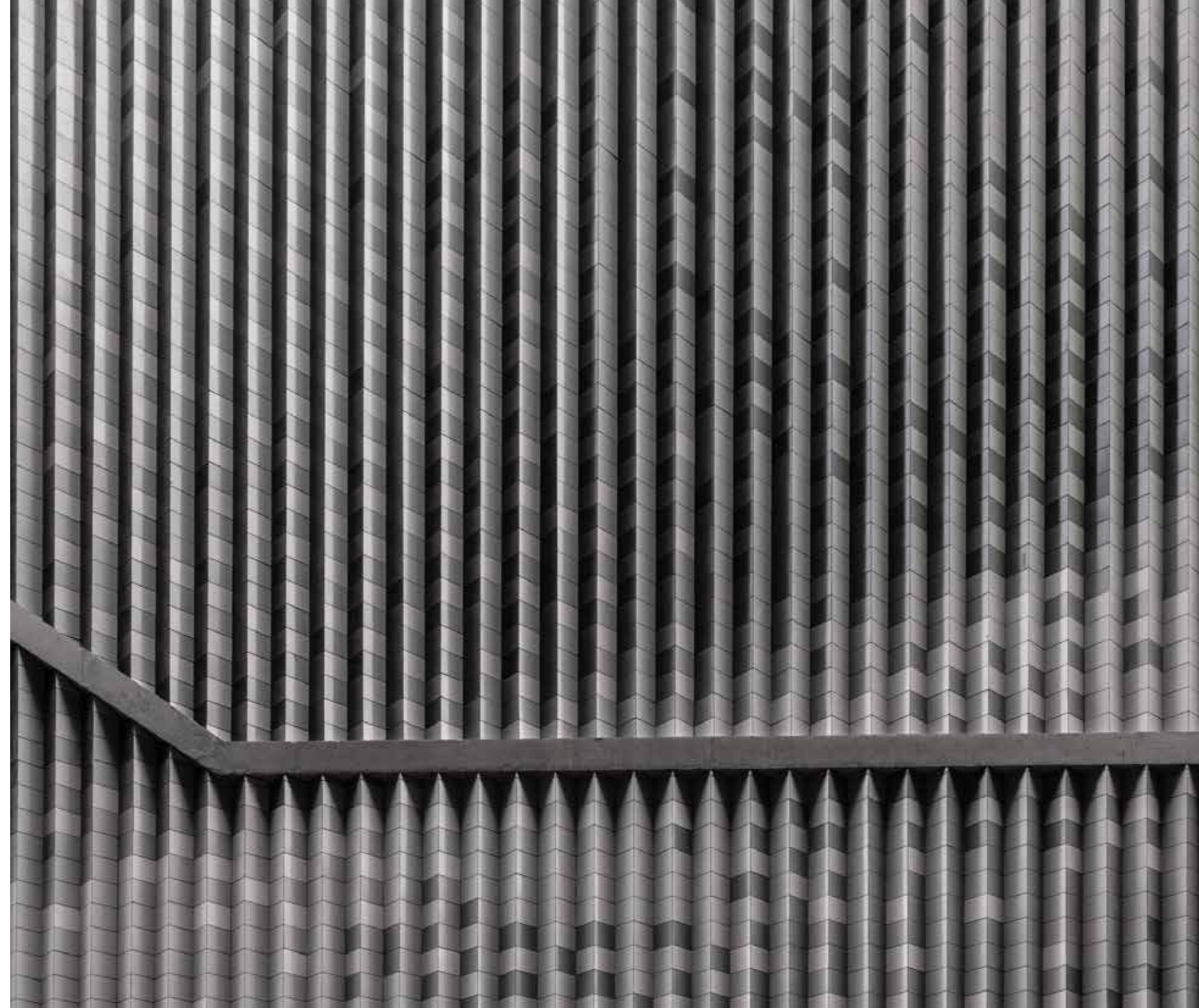
STONEO PURE

This building's location on a cliff facing the sea is very special.

Here, **Stoneo's** low water absorption guarantees both resistance and durability. Its resistance to marine environments and wind loads provides the safety required for this type of application.



Range: PURE
Colour: M03
Texture: Slate



MIS

MUSEUM OF IMAGE AND SOUND

BRAZIL

Diller Scofidio + Renfro (NY-USA)
and Índio Da Costa A.U.T.

STONEO ART

*"Stoneo allows projects to be customised thanks to its range of textures and colours. This was a key factor, as mural art consists of 'black and white' images, or images that require a gradual, consistent relationship between tones. Another advantage of working together with **ULMA** is that digital files can be processed for direct conversion between the digital image provided by the architects, the manufacturing and the physical mapping of the modular elements."*

Índio da Costa.

"We were impressed by the fact that the system is 100% prefabricated, unitised and dry-assembled. This provides absolute precision in response to the need for perfect vertical and horizontal alignment. We have not found any pixel/panel out of place, and, not only that, we have been pleasantly surprised with the final result of the work, which has exceeded all of our expectations."

Chris Andreacola.

Range: FEEL
Colours: 6 Special Developments
Texture: Smooth

*The look and smile of singer and actress Carmen Miranda.



TORRE DIAGONAL

SPAIN
Jordi Moliner,
from Estudio Moliner
Office Architects

STONEO PURE

"The project rescues an unfinished concrete structure and transforms the building by increasing its height, formally and materially redesigning its envelope."

The unifying criterion in the construction solutions adopted recomposes the randomness of certain openings or structural elements of the building."

Range: PURE
Colour: P03
Texture: Slate



**GRAN VÍA PROPERTY
SAN SEBASTIÁN**

SPAIN
Álvaro Arcaya
AR Arquitectos

STONEO LOOK

"This work proves that you don't have to relinquish innovative technical systems such as the ventilated facade when refurbishing classic areas.

*ULMA's ventilated facade system is fully adapted to the requirements set out by **AR Arquitectos**, allowing us to break away from the image of a standardised modular system."*

Range: LOOK
Colour: Special Development
Texture: Fretworked



NUMANCIA HOSPITAL

SPAIN
Joan Prats

STONEO PURE AND FEEL

*"The versatility of the product and the availability of **ULMA**'s technical team in terms of finding solutions to make the project viable were key when it came to selecting the materials."*

Range: FEEL and PURE
Colours: M02, M05, P02 and P03
Texture: Slate





LA ALQUERÍA MARKET

SPAIN
Manuel E. Sánchez

STONEO ART

“Our main goal in the initial phase was to integrate the tradition and history of a city such as Seville in the restoration of a building with no architectural value, namely a fusion between tradition and innovation. To this end, we created a facade cladding based on the Neo-Mudéjar influence that is very present in the area, which will filter the entry of light and create environments with a high level of comfort inside, while giving the exterior of the building a modern aesthetic.”

Range: FEEL
Colour: M24
Texture: Smooth Perforated





ARRIKRUTZ INTERPRETATION CENTRE

SPAIN
LKS Ingeniería

STONEO PURE

The Arrikruz cave, an underground labyrinth of galleries distributed in superimposed layers, can be found in the heart of Aizkorri mountain range. Stalactites, stalagmites... time, together with underground rivers, have created impossible shapes. The buildings that house the interpretation centre and the entrance to the cave had to be integrated in such a way as to blend in with the spectacular surroundings. The materials chosen are therefore of natural origin, combining a butt-joint stone masonry wall, the laminated wood roof structure and the K-slat ventilated facade that blends its extraordinary properties with represented shades of the limestone rock that is predominant in the environment.

Range: PURE
Colour: P02, P31 and P03
Texture: Striped



MIRIBILLA
PELOTA COURT

SPAIN
IDOM

STONEO PURE

The massive block that stands in Bilbao, visible from hundreds of metres around, has been covered with M03 colored **Stoneo** panels. The pelota court is located in a high, open area with harsh weather conditions, where the wind and rain lash hard in winter, while the hot sun beats down in summer. These are the main reasons behind the decision to clad the envelope with a material that would age well in this type of weather, while at the same time ensuring a natural, pleasant and unique aesthetic.

Range: PURE
Colour: M03
Texture: Striped





AIETE HEALTH CENTRE

SPAIN
Enrique Muga,
Joseba Fernández,
Beatriz Bergasa,
Ekain Olaizola
Satie Arquitectos

STONEO LOOK

*"The combination of **ULMA** 's ventilated facade system elements has allowed us to achieve the linearity and horizontality we were looking for. The flexibility of both the finishes and the system has given us a range of options to choose from. **Stoneo** has allowed the volumes to be understood as specific units, overcoming the problem of continuity of the cladding on the corners and roofs. The result is a modern, vibrant facade with personality."*

Range: LOOK
Colour: M24
Texture: Water





NOKIA LIBRARY

FINLAND

Pekka Koli - Tilatakom

STONEO LOOK

*"The pure white surface, associated with paper, reflects a new beginning and creates a connection between Nokia's paper industry and the library's materials. The **Stoneo** surface, which resembles crumpled paper, gives this public cultural building a valuable and distinctive appearance."*

Range: LOOK
Colour: M24
Texture: Paper



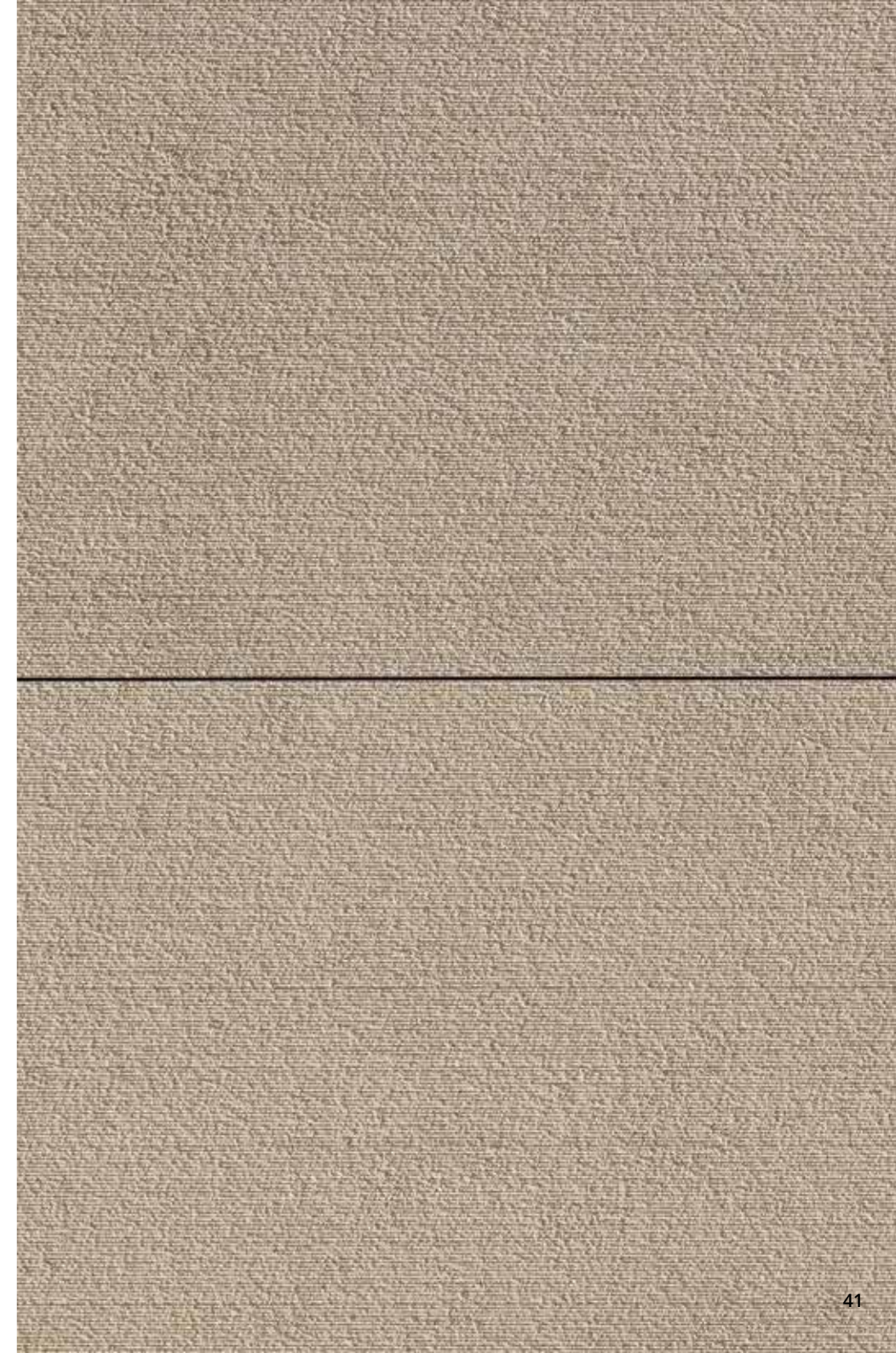
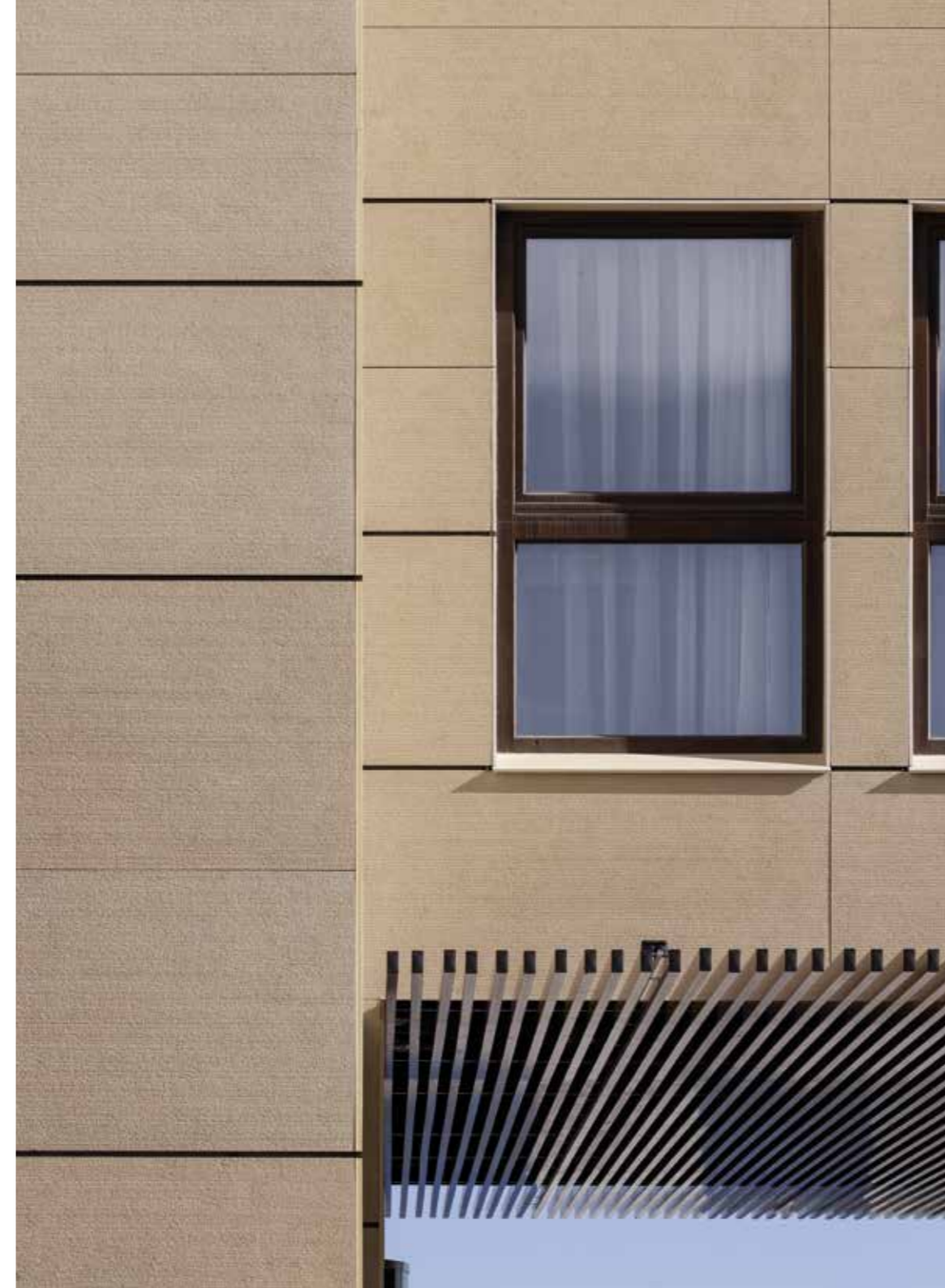
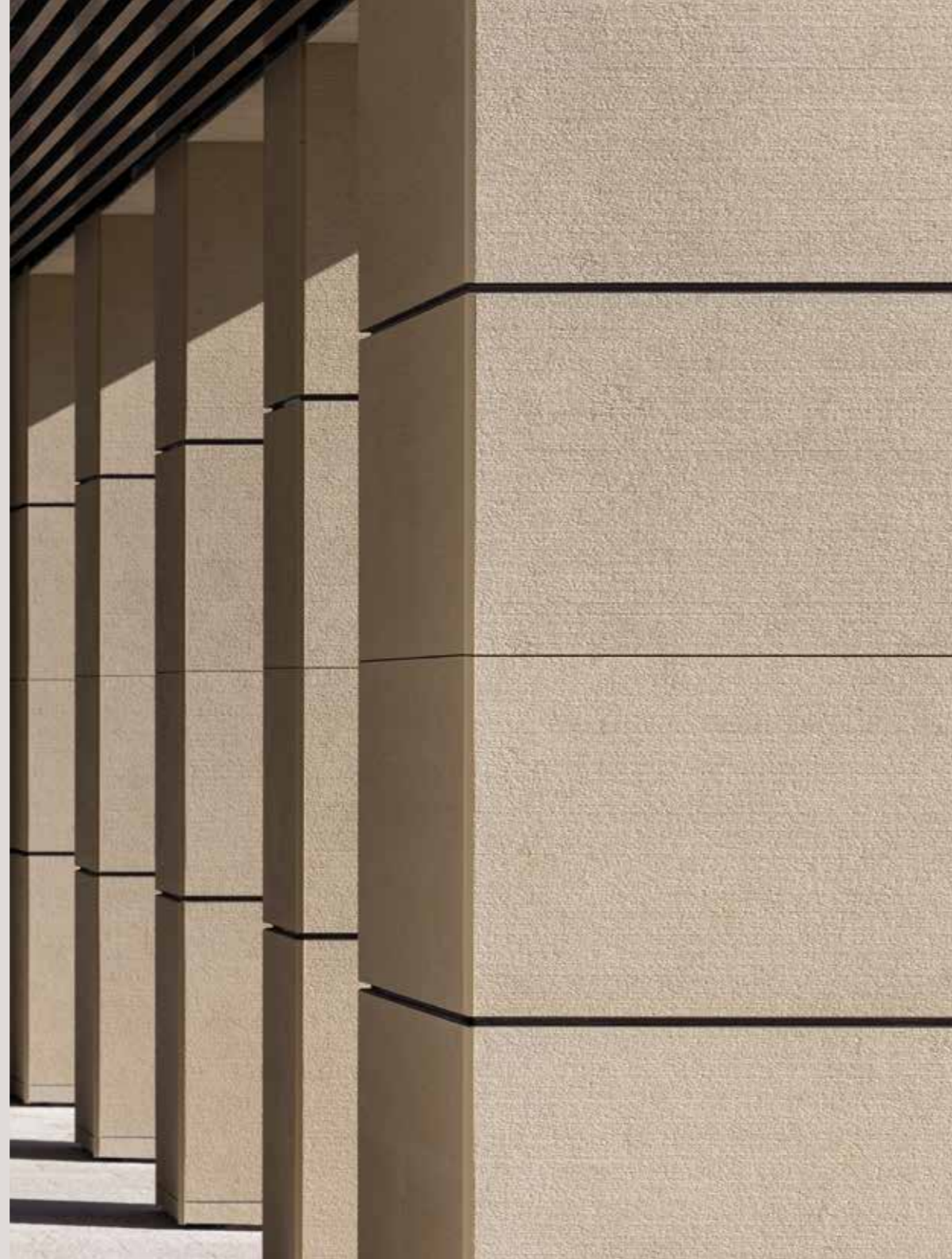
HOTEL CATALONIA SAN SEBASTIÁN

SPAIN
Jacinto Arqués
Estudio Arqués - Molinero
arquitectos

STONEO LOOK AND PURE

The choice of texture and sandstone colour in this project was defined by the fact it had to co-exist with a historic building located close by. That is why the Hotel combines the white and stone colours. **Stoneo** has been used for both the facade cladding and also the window surrounds and window sills, which are in the same tone but with the smooth texture.

Range: PURE
Colour: P30
Texture: Striped





TORRE ESTRONCI 99
BARCELONA

SPAIN
Fernando Tortajada

STONEO PURE AND FEEL

*"Torre Estronci has special modulations, which aim to give the building an aesthetic value. We have chosen **Stoneo** because it is a resistant material that ages well, offers good finishes, and allows a wide range of textures and colours. This brings a range of options in project design, and helps us provide a modern, contemporary aesthetic."*

Range: PURE and FEEL
Colour: M24
Texture: Smooth
Colour: P18
Texture: Slate



**APANID CENTRE FOR
DISABLED PEOPLE**

SPAIN
Mafalda Riveiro Arquitectos

STONEO FEEL

"We wanted to use an energy-efficient facade while at the same time ensuring a strong aesthetic with large pieces. We were looking for materials with a variety of colours, and wanted to use a single material for the facades and window surrounds. We are really pleased with the result in every way."

Range: FEEL
Colour: M24
Texture: Smooth





HOTEL ENCOMIENDA BALCONIES

SPAIN
Tas Valor Arquitectura

STONEO FORMS

The balconies are the protagonists of this facade, giving it a light, modern appearance. They define and propose a symmetrical, clean, minimalist aesthetic. The **Tas Valor** studio was looking for a prefabricated solution where the design and the anthracite grey finish were key.

Range: FORMS*
Colour: M02
Balconies

*The finishes available for the Forms Range are the colours from the FEEL Range, pages 74-75



ALCOY PROPERTIES

SPAIN

STONEO FORMS

Specific parts have been designed and manufactured to meet the building's needs. The key benefits of this material are its durability in freeze and thaw cycles, and its practically zero water absorption rate. If we also consider the absence of reinforcement on the parts, we can categorically state that **Stoneo Forms** helps extend the working life of buildings.

Range: FORMS*
Colour: M10
Terrace Front

*The finishes available for the Forms Range are the colours from the FEEL Range, pages 74-75





BANCA MARCH - MALLORCA

SPAIN
Sergio Díez
Gascón Soler
CMV Architects

STONEO FORMS

"The building's facade was surrounded by pillars that we successfully coated in order to achieve a much more aesthetically pleasing appearance. We also manufactured special, customised slats."

Range: FORMS*
Colour: M24
Vertical Slats

*The finishes available for the Forms Range are the colours from the FEEL Range, pages 74-75





MORALEJA PROPERTIES

SPAIN
Juan Carlos Soriano

STONEO FORMS

*"Their ability to adapt was evident from the first moment the idea of using **Stoneo Forms** for the facade walls was put forward. The studio has also received the advice it required at all times. Analysing the final result, the degree of satisfaction is very high. I believe that incorporating this material as part of the facades guarantees their durability".*

Range: FORMS*
Colour: M06
Special front

*The finishes available for the Forms Range are the colours from the FEEL Range, pages 74-75

HARRI BENCH SEAT

SPAIN

Miguel Ángel Ciganda

STREET FURNITURE

Harri is a bench seat with a discreet, simple design that is at the same time elegant, versatile and timeless. It is a 2-metre long piece, inspired by the towers at Aránzazu Sanctuary.

We have a line of street furniture with items that combine design, comfort and durability.



Range: FORMS*
Colour: M02

*The finishes available for the Forms Range are the colours from the FEEL Range, pages 74-75





TEXTURES
TO CREATE
UNIQUE PROJECTS

PURE
LOOK
ART
FEEL

STONEO PURE

THE ORIGIN

Natural appearance of stone carved over the course of time.

To be integrated in projects where a noble material with unbeatable properties is required.



SMOOTH TEXTURE



SLATE TEXTURE



STRIPED TEXTURE

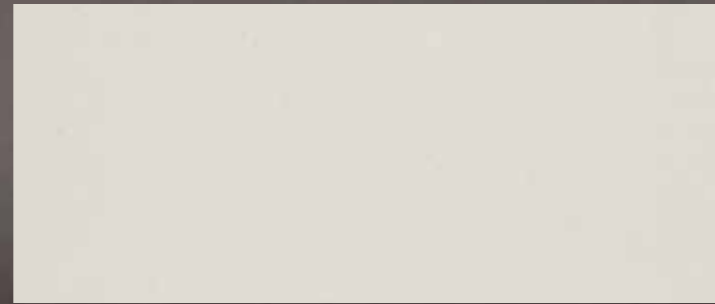


TONALITIES

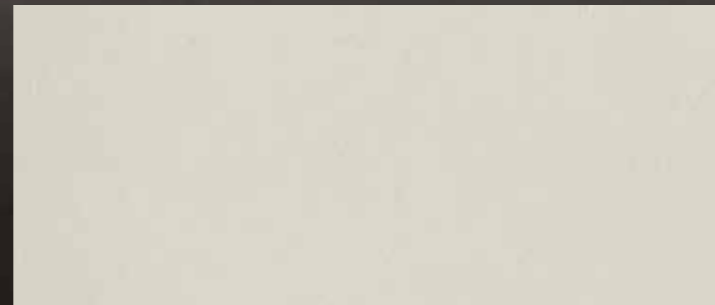
PURE



P06



P23



P22



P21

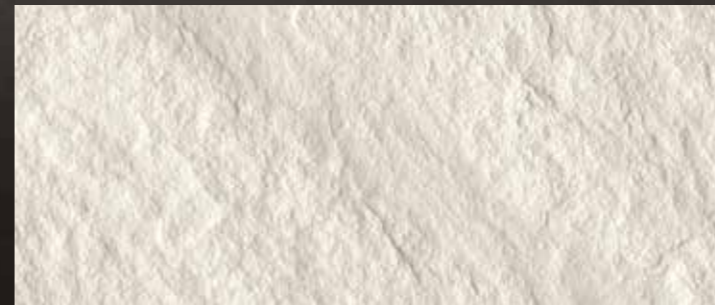
SMOOTH TEXTURE



P06



P23



P22



P21

SLATE TEXTURE



P06



P23

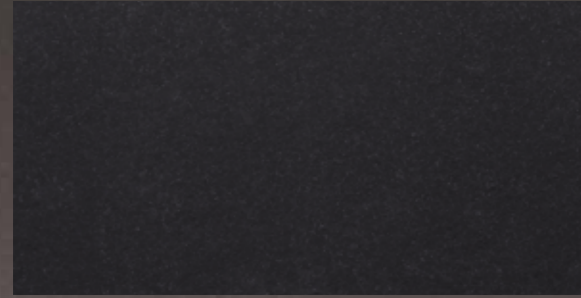


P22



P21

STRIPED TEXTURE



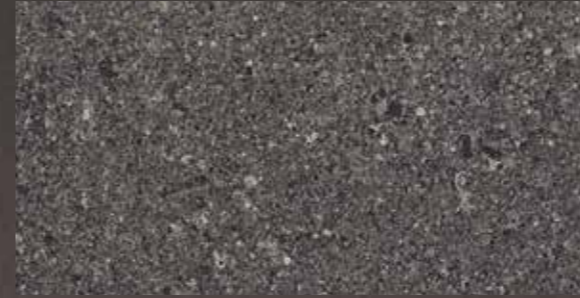
M03



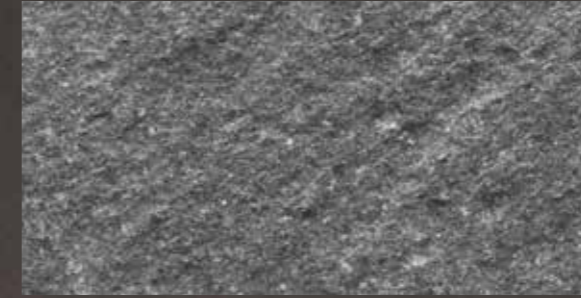
M03



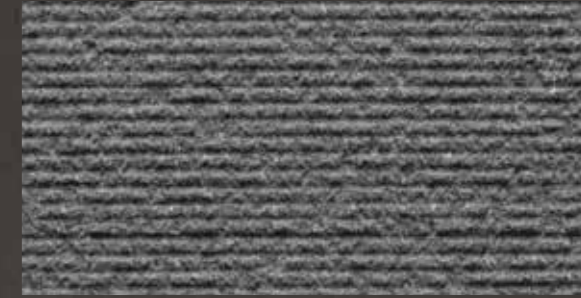
M03



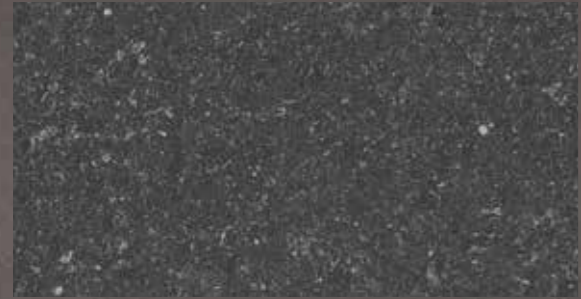
P13



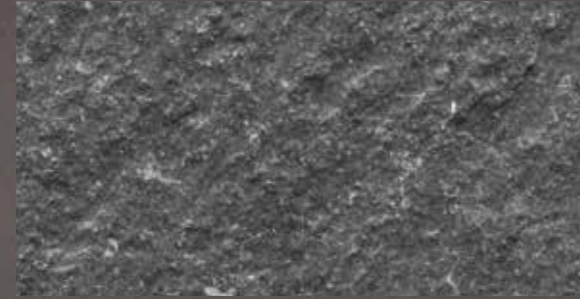
P13



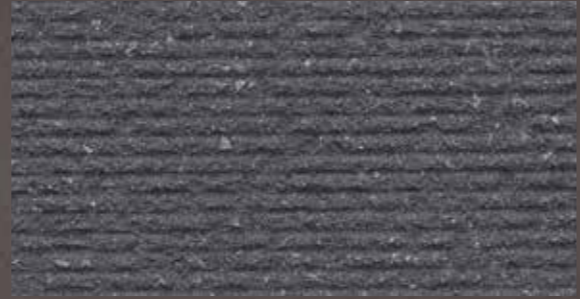
P13



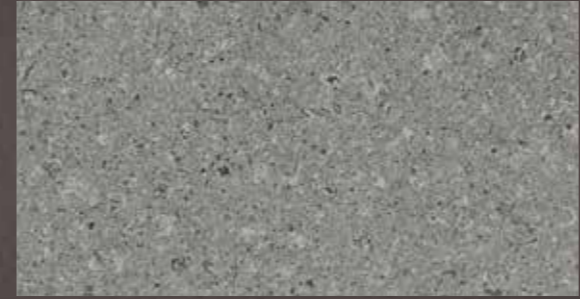
P03



P03



P03



P31



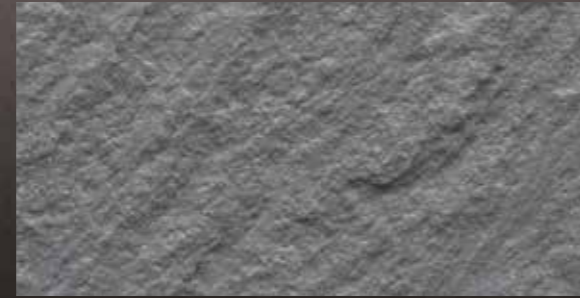
P31



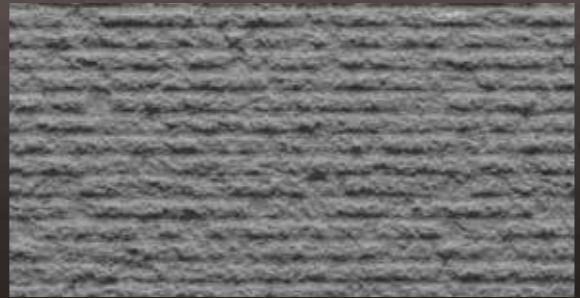
P31



P18



P18



P18



P02



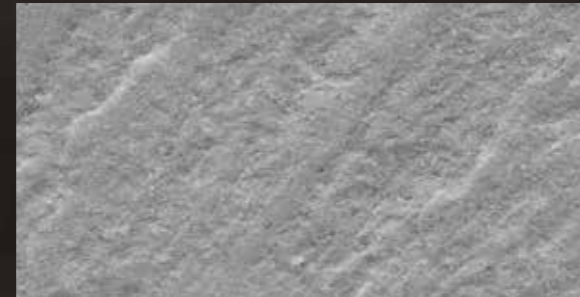
P02



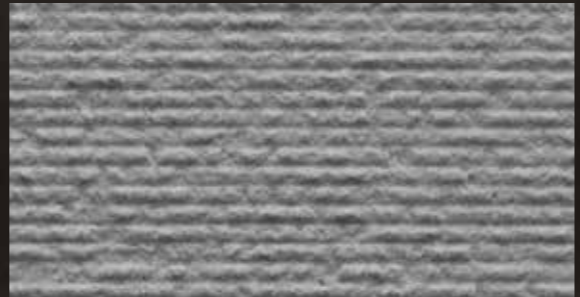
P02



P19



P19



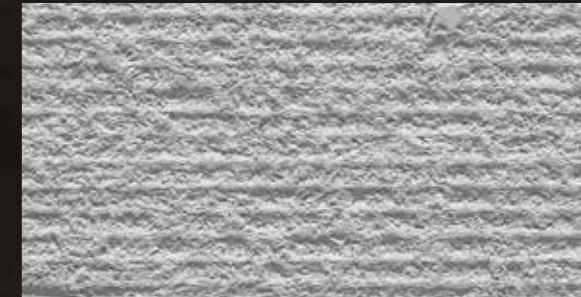
P19



P20



P20



P20

SMOOTH TEXTURE

SLATE TEXTURE

STRIPED TEXTURE

SMOOTH TEXTURE

SLATE TEXTURE

STRIPED TEXTURE



P28



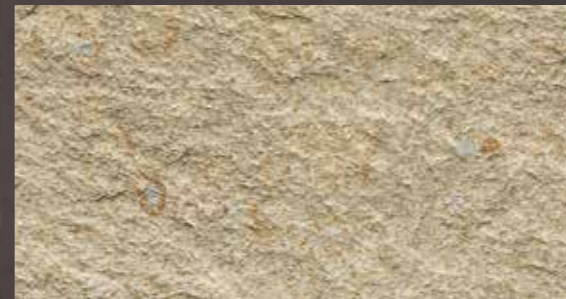
P28



P28



P30



P30



P30



P27



P27



P27



P29



P29



P29



P26



P26



P26



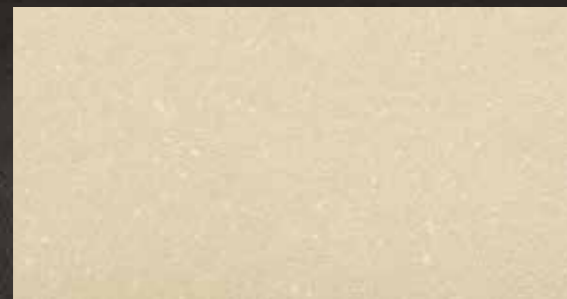
P16



P16



P16



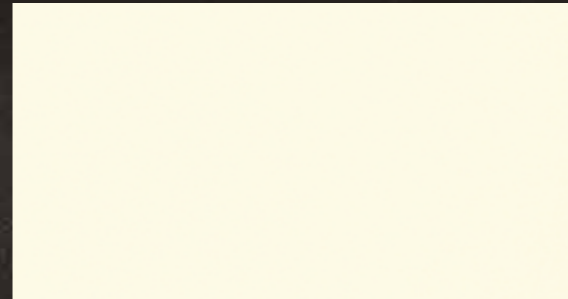
P25



P25



P25



M05



M05



M05

SMOOTH TEXTURE

SLATE TEXTURE

STRIPED TEXTURE

SMOOTH TEXTURE

SLATE TEXTURE

STRIPED TEXTURE

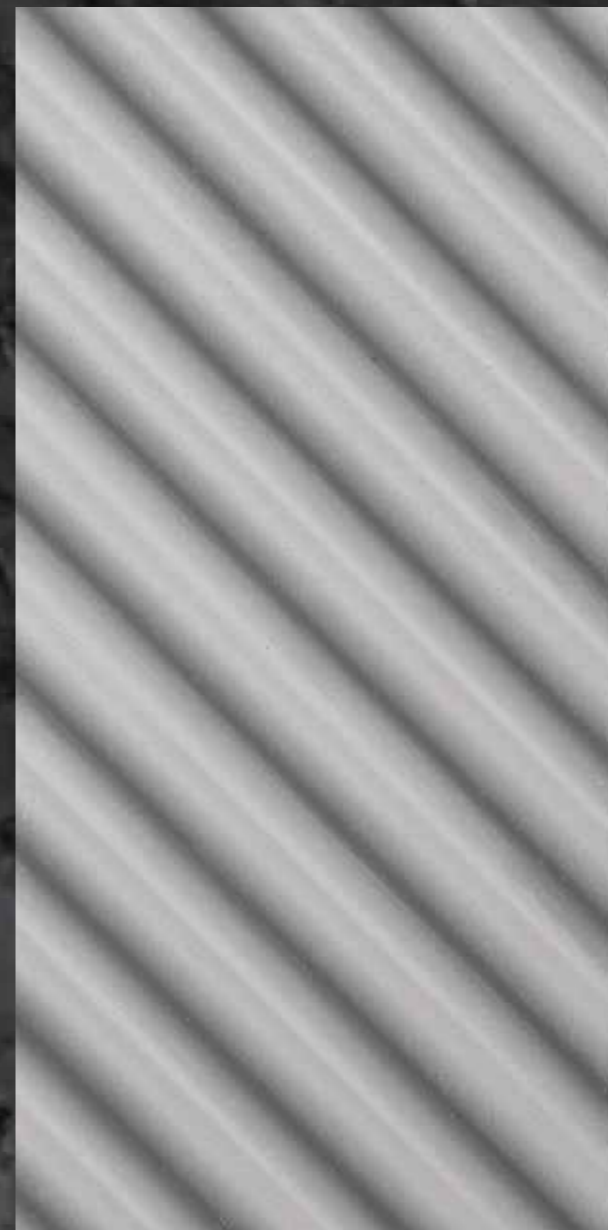
STONEO LOOK

DYNAMISM

Endless possibilities to create dynamic effects and shades.
A thousand colors in one.



PAPER TEXTURE



DIAGONAL WATER TEXTURE



VERTICAL WATER TEXTURE

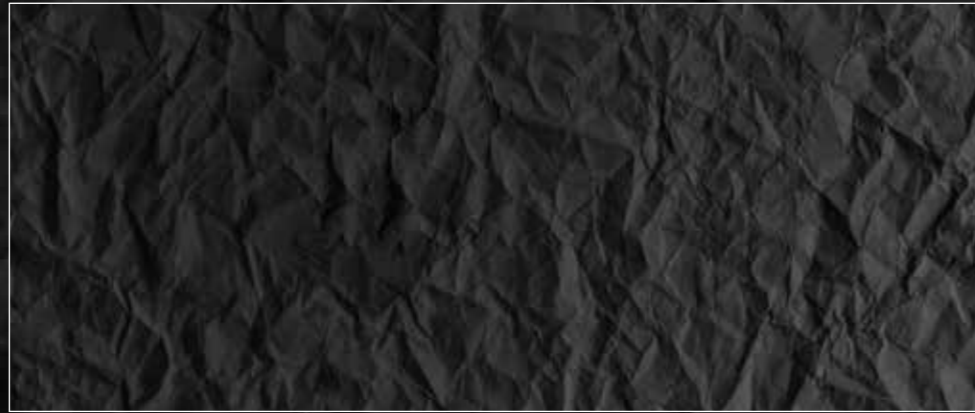


HORIZONTAL WATER TEXTURE

COLORS

LOOK

PAPER



PAPER M03



PAPER M24



M11



M11



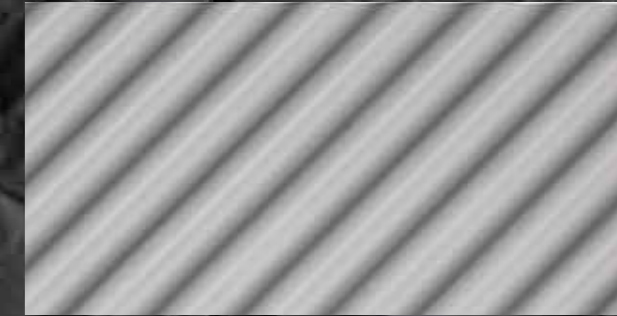
M11



M06



M06



M06



M10



M10



M10



M24



M24



M24

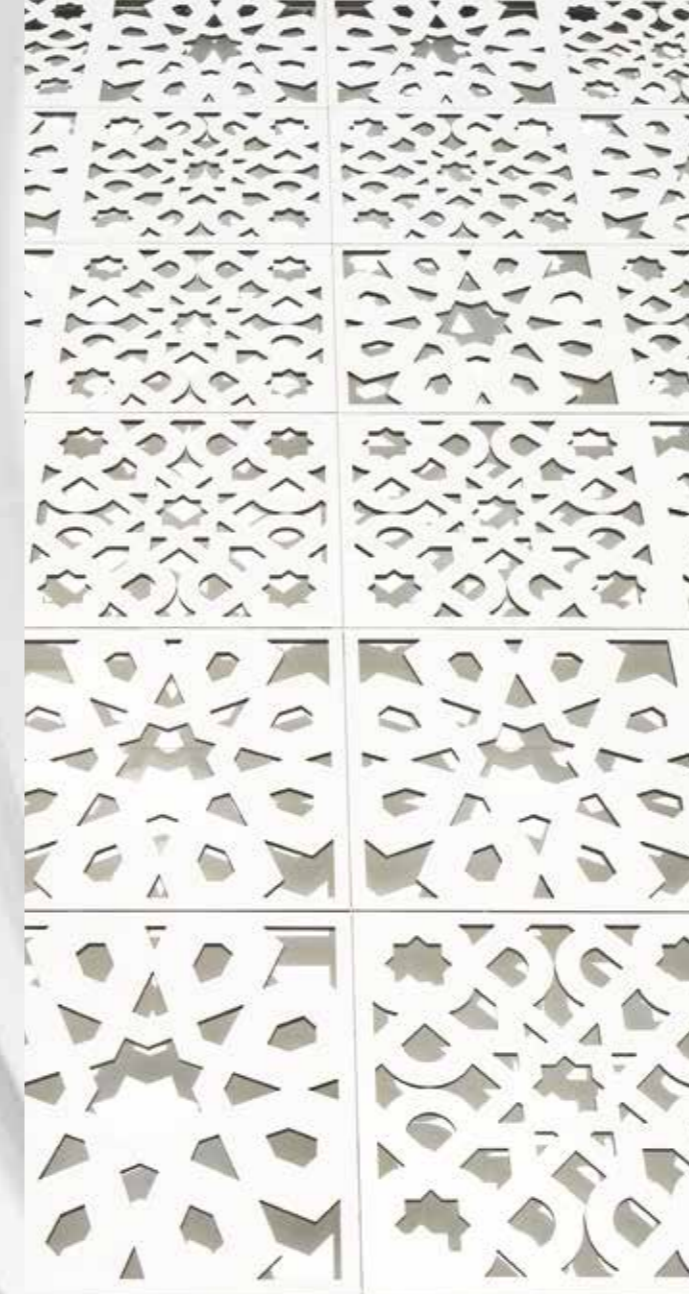
STONEO ART

INSPIRATION

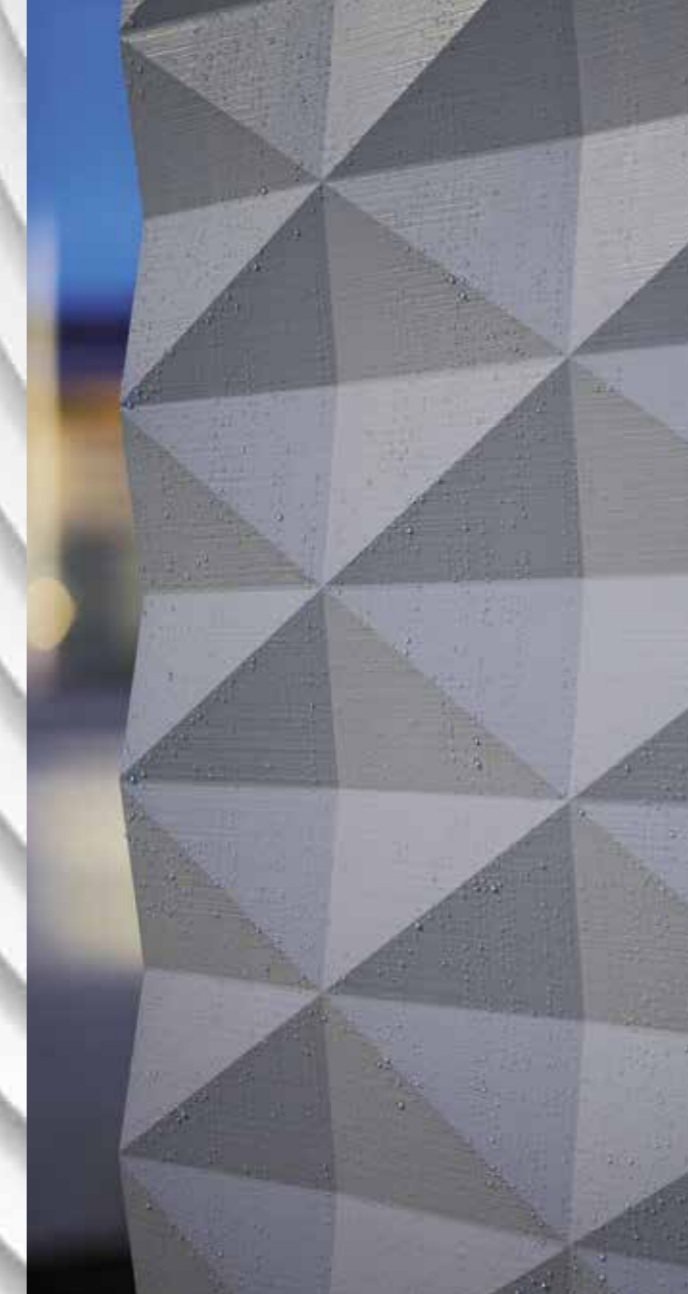
Creative freedom to come up with unique, creative facades, where any texture, colour or design envisaged by the architect is possible. The ART range is born in the architect's mind and created in our ideas laboratory. Teamwork that ensures infinite customisation options.



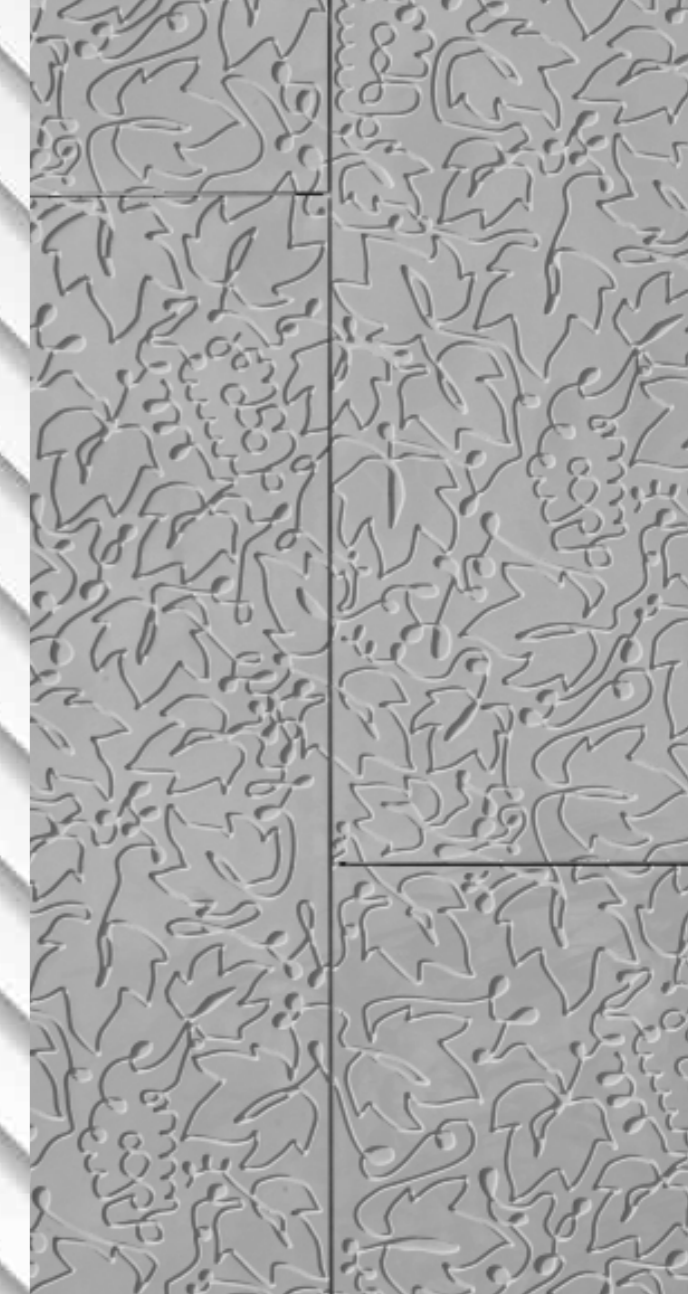
SMOOTH PIXELATED



SMOOTH PERFORATED



CUSTOM 3D

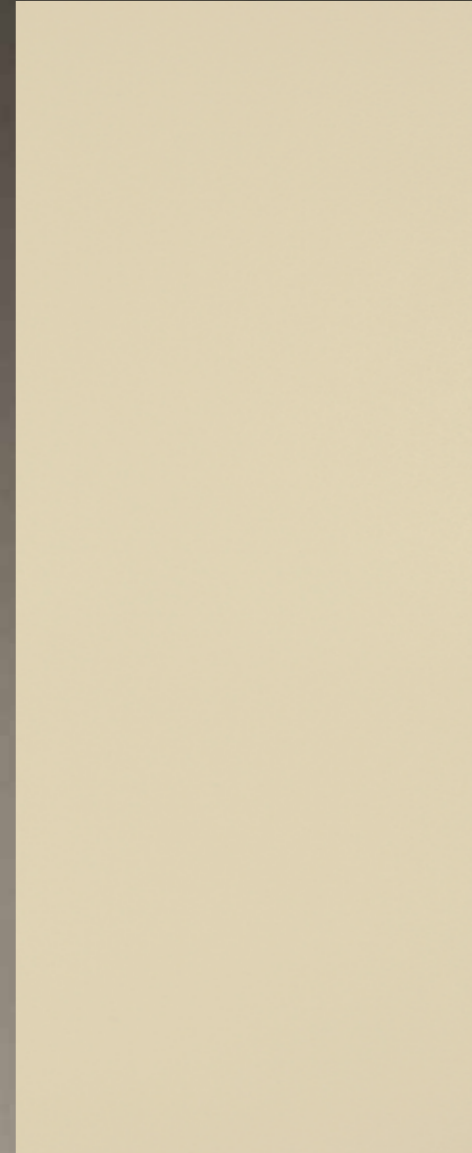
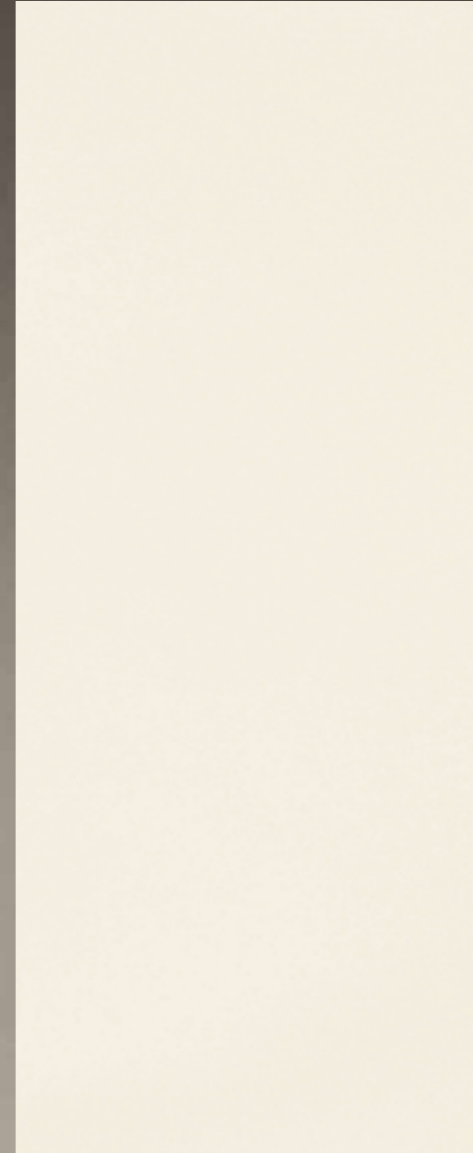
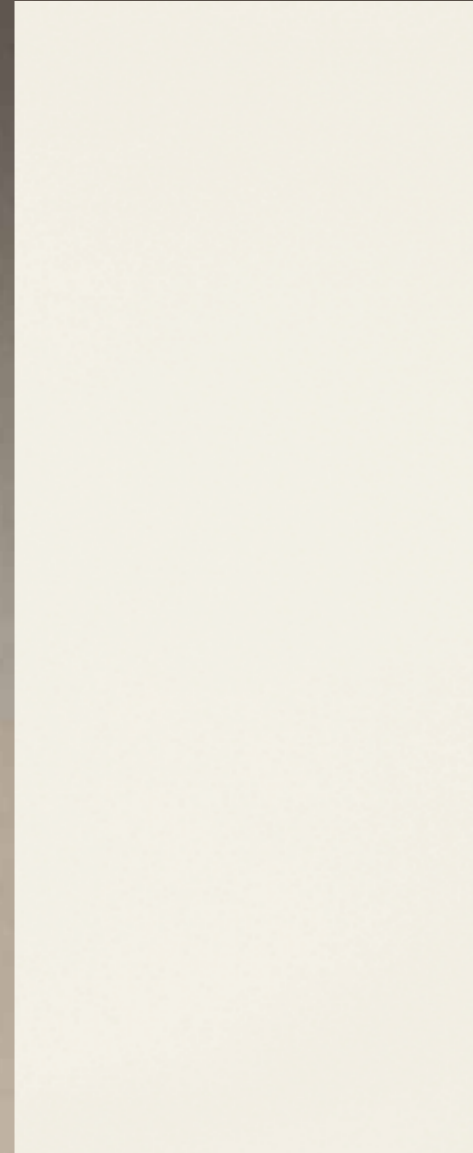


GRAPE LEAVES

STONEO FEEL

HARMONY

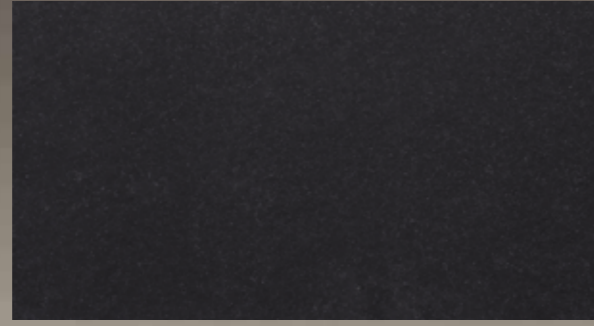
Smooth surface that adds a continuous, uniform finish;
an inspiring breath of air, from the ground to the sky.



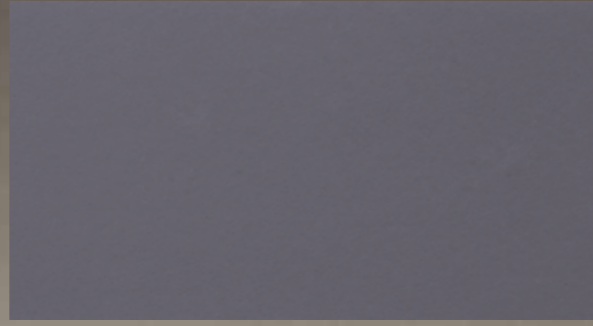
SMOOTH TEXTURE

COLORS

FEEL



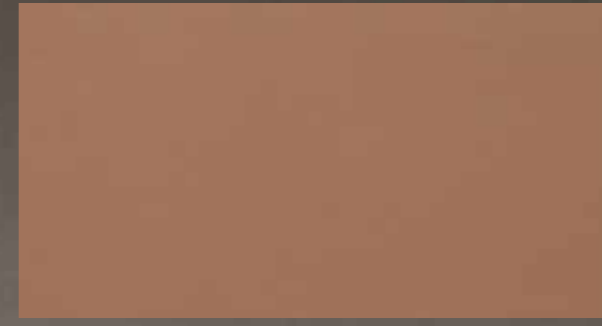
M03



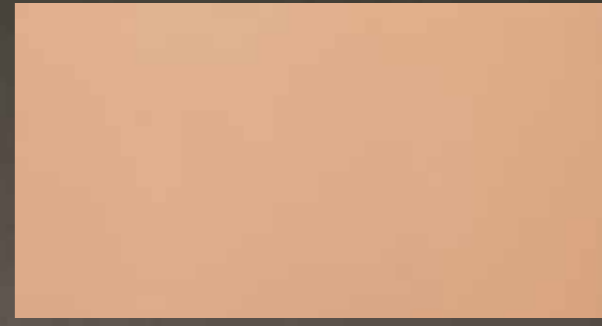
M11



M25



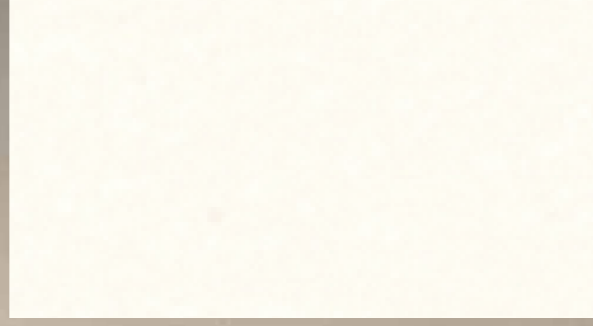
M09



M15



M29



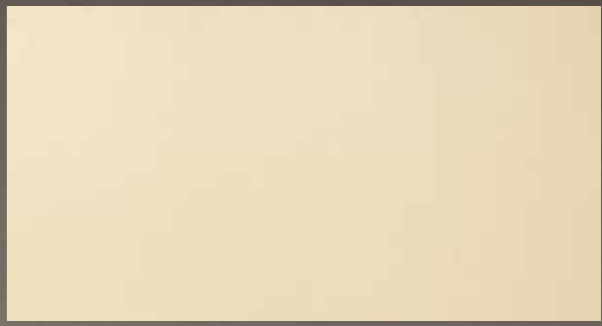
M24



M18



M01



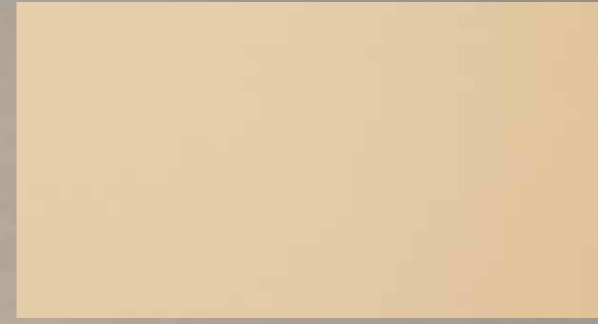
M12



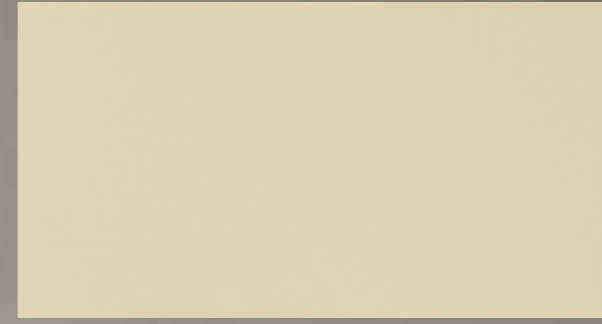
M02



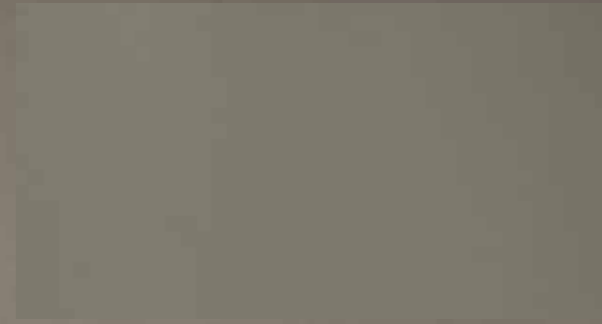
M06



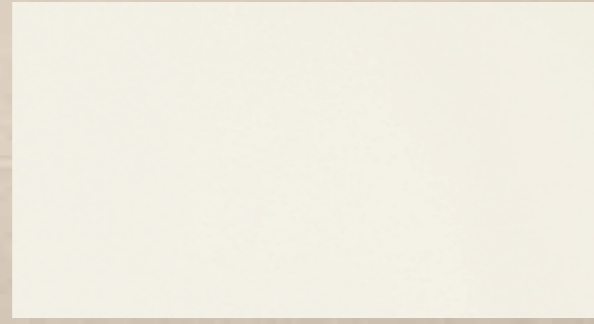
M14



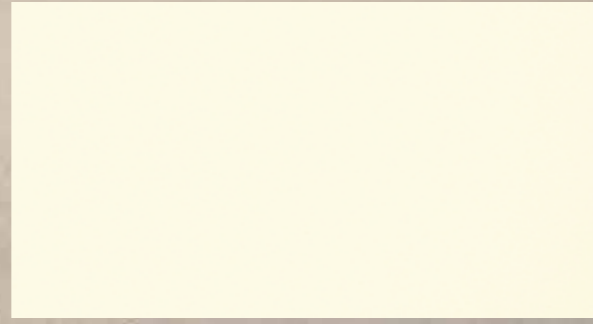
M13



M19



M10



M05



M21



M28



M07

DRAINAGE SOLUTIONS

SPAIN
Pedestrianised area.
Santander

CONCEALED DRAINAGE

As well as the facade solutions shown in this document, we also offer **drainage solutions**.

The concealed drainage solution can be seen here. It is a simple way to ensure the water runoff system goes completely unnoticed, blending perfectly into the urban landscape. We can help you find the most suitable drainage solution for your project, whether a pedestrian area or an airport.



Multi V+ channel with slot grating



ULMA ARCHITECTURAL SOLUTIONS

ulmaarchitectural.com

Tel. 0034 943 78 06 00
info@ulmaarchitectural.com